



An aerial site plan of Wagner Park. The plan shows a large, irregularly shaped park area with various green spaces, paths, and buildings. A large, light-colored building is on the left, and a smaller, red-roofed building is in the center. The park is bordered by a river on the right and a street on the top. A 'PIERHEAD LINE' is marked on the river. The Hudson River is labeled on the right side of the plan.


# Wagner Park

Battery Park City Authority

March 22, 2017



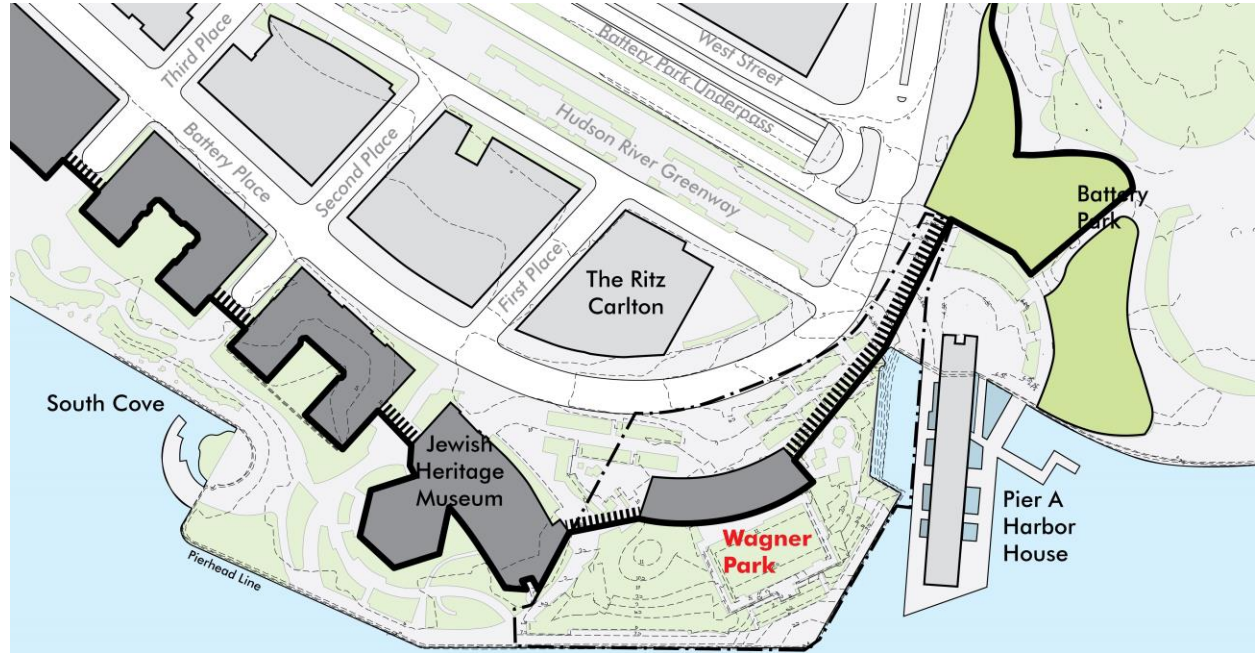


- 
- ***Use the property to provide resiliency protection for upland areas.***
  - Extend the Esplanade thru to Pier A and the Battery
  - Improve the park, for more use by BPC residents.
  - Improve maintenance and support facilities.
  - Provide better opportunity for food and beverage

# Resiliency: Continuous Flood Barrier



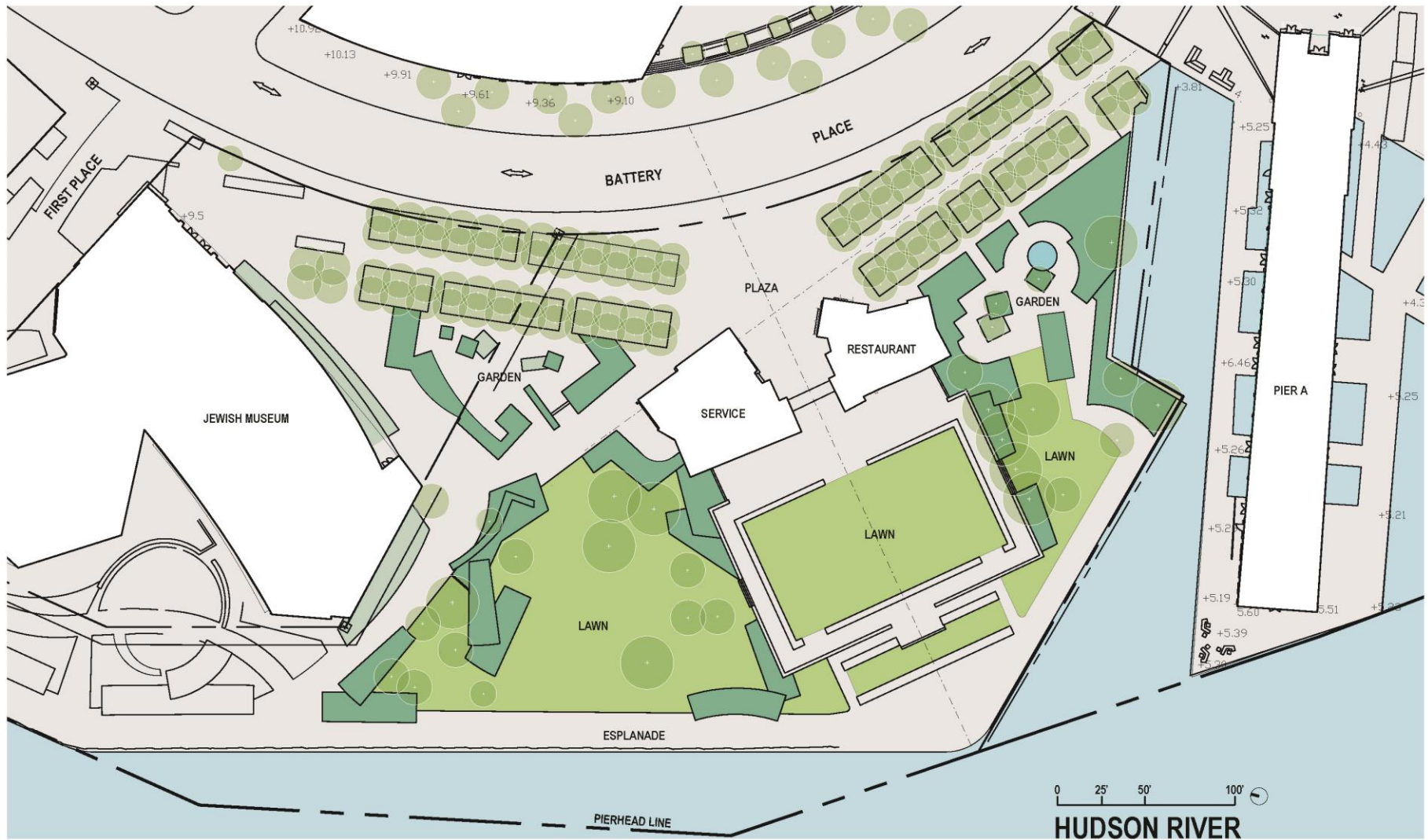
Battery Park City Authority: Wagner Park



Perkins Eastman



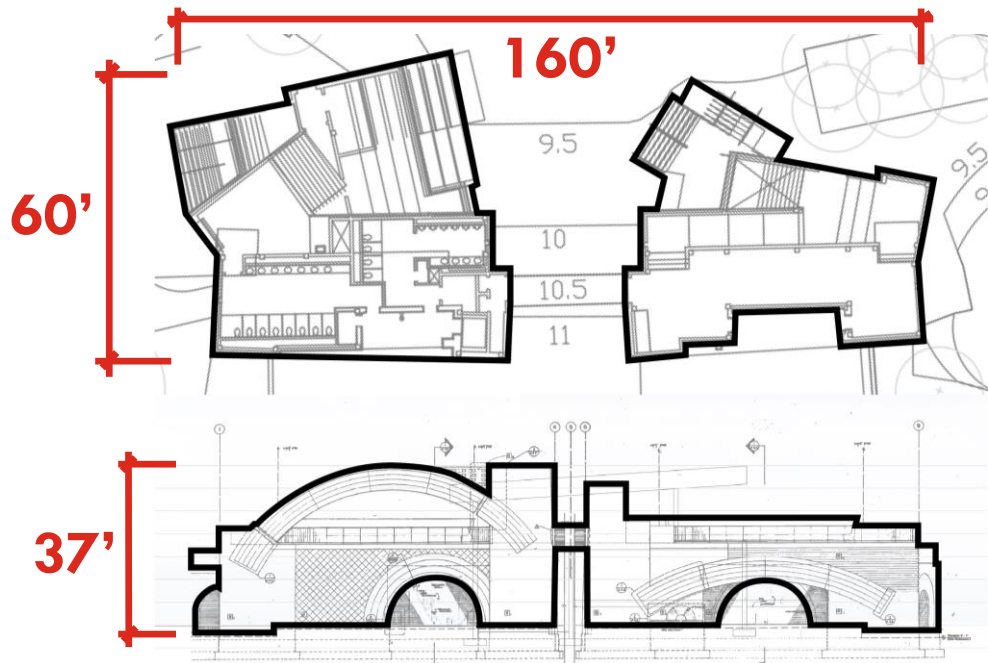
# Existing Park Plan





### • NOT RESILIENT

- Not achieving food & beverage potential
- Maintenance operations needs more and better space.
- Public access to the upper level is difficult.
- Toilets need to be replaced.
- ***Due to the number and extent of deficiencies and potential modification cost, replacement of building is recommended***





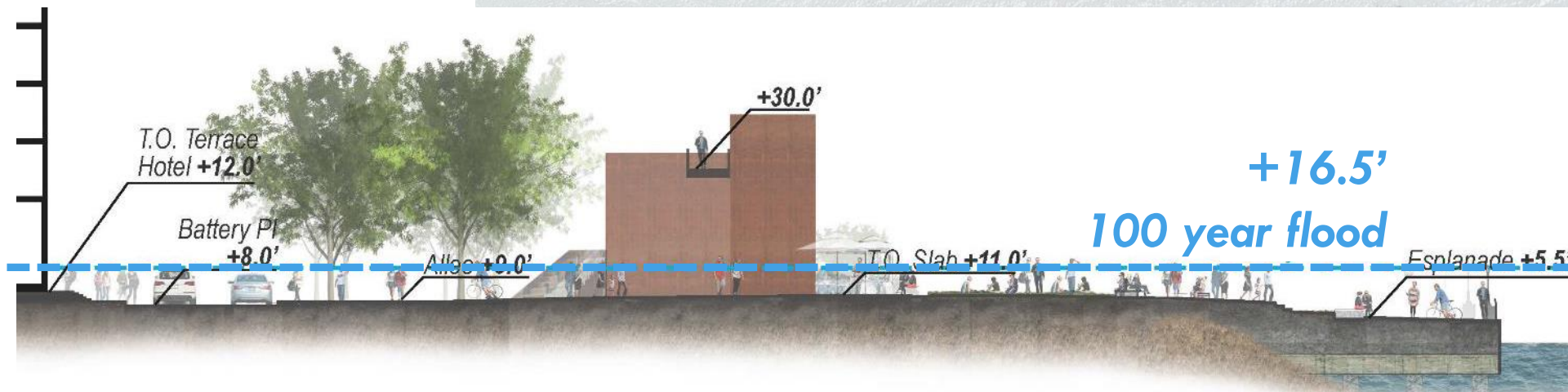
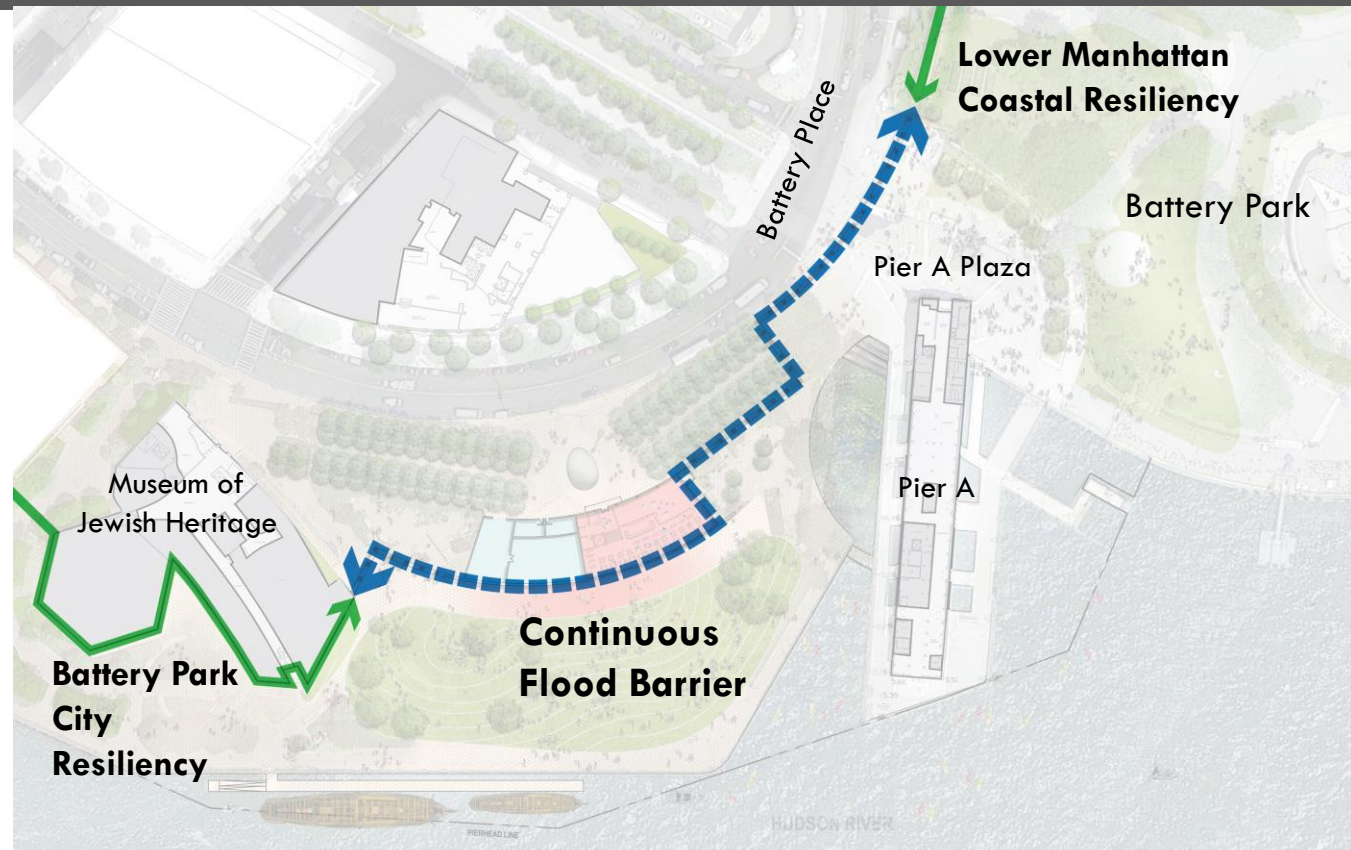
# Proposed Park Plan





# New Park Pavilion Design Principles: Resiliency

- More resilient barrier to protect upland areas
- More resilient facility
- DFE (Design Flood Elevation) 100 year flood elevation:  $El+16.5'$  NAVD per *Lower Manhattan Coastal Resiliency Plan*

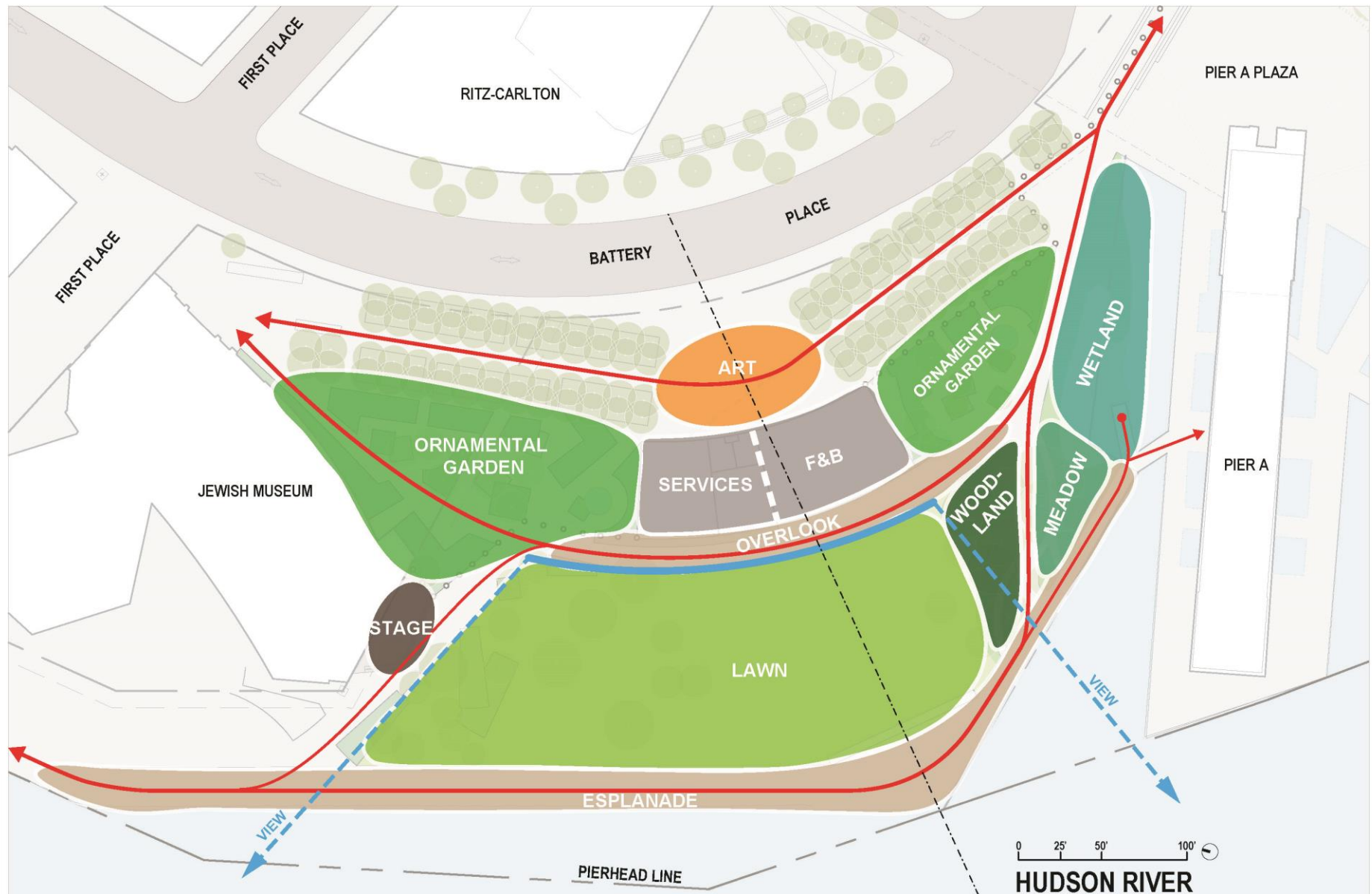




# Georgetown Deployable Columns







# Ornamental Gardens





# Overlay of Existing and Proposed Gardens





# Ornamental Gardens





## Plant Wall at Building





# North Ornamental Garden

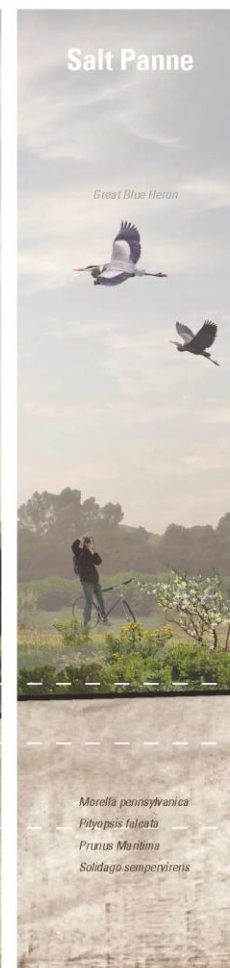




# Woodland-Wetland Gardens: Native Ecology Transect



# Woodland-Wetland Gardens: Native Ecology Transect







## WETLAND



Groundseltree, Sea-myrtle  
*Baccharis halimifolia*  
5-12 ft

Shade shrub, deciduous, fall color, drought tolerant, gray leaves, full sun, partial shade, evergreen  
Salt tolerant



Sweet Fern  
*Comptonia peregrina*  
2-5 ft

Type: Deciduous shrub  
Bloom Time: April to May  
Bloom Description: Yellowish green  
Sun: Full sun to part shade  
Salt tolerant



Bayberry  
*Morella pensylvanica*  
5-10 ft

Type: Deciduous shrub  
Bloom Time: May  
Bloom Description: Yellowish green (male)  
Sun: Full sun to part shade  
Salt tolerant



Cordgrass  
*Spartina alterniflora*  
3-7 ft

Type: grass  
Bloom Time: July to August  
Bloom Description: Yellow-brown  
Sun: Full sun to part shade  
Salt tolerant



## MEADOW



Evening Primrose  
*Oenothera biennis*  
3-5 ft

Type: Herbaceous perennial  
Bloom Time: June to September  
Bloom Description: Yellow  
Sun: Full sun to part shade  
Salt tolerant



Switchgrass  
*Panicum virgatum*  
3-6 ft

Type: Ornamental grass  
Bloom Time: July to February  
Bloom Description: Pink-tinged  
Sun: Full sun to part shade  
Salt tolerant



Little Bluestem  
*Schizachyrium scoparium*  
2-4 ft

Type: Ornamental grass  
Bloom Time: August to February  
Bloom Description: Purplish bronze  
Sun: Full sun  
Salt tolerant



Seaside Goldenrod  
*Solidago sempervirens* L.  
3-6 ft

Type: Herbaceous perennial  
Bloom Time: August to October  
Bloom Description: Yellow  
Sun: Full sun  
Salt tolerant

\*The image on the left is intended to show experiential qualities of a meadow garden. Plants in this image are not all salt-tolerant species.





## WOODLAND



Hackberry  
*Celtis occidentalis*  
40-60 ft  
  
Type: Tree  
Bloom Time: April to May  
Bloom Description: Green  
Sun: Full sun to part shade  
Salt tolerant



White Oak  
*Quercus alba*  
50-80 ft  
  
Type: Tree  
Bloom Time: May  
Bloom Description: Yellowish-green  
Sun: Full sun  
Salt tolerant



Eastern Redbud  
*Cercis canadensis*  
20-30 ft  
  
Type: Tree  
Bloom Time: April  
Bloom Description: Pink  
Sun: Full sun to part shade  
Moderate salt tolerance



Serviceberry  
*Amelanchier arborea*  
15-25 ft  
  
Type: Tree  
Bloom Time: March to April  
Bloom Description: White  
Sun: Full sun to part shade  
Moderate salt tolerance

\*The image on the left is intended to show experiential qualities of a woodland garden. Plants in this image are not all salt-tolerant species.



# Overlook at Wetland: Viewing & Education



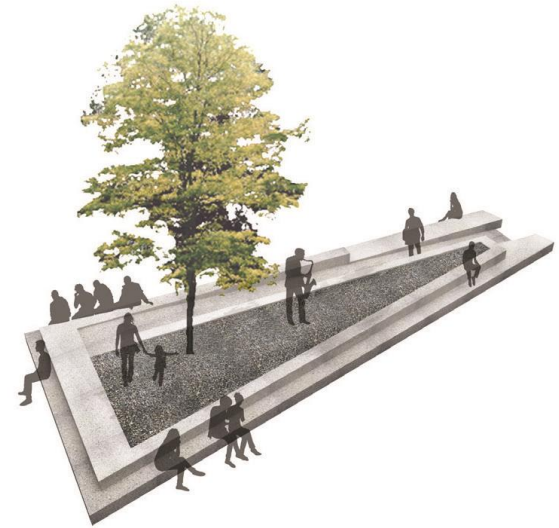
Signage for wayfinding & education on wetland ecology



Immersive wetland experience at the overlook



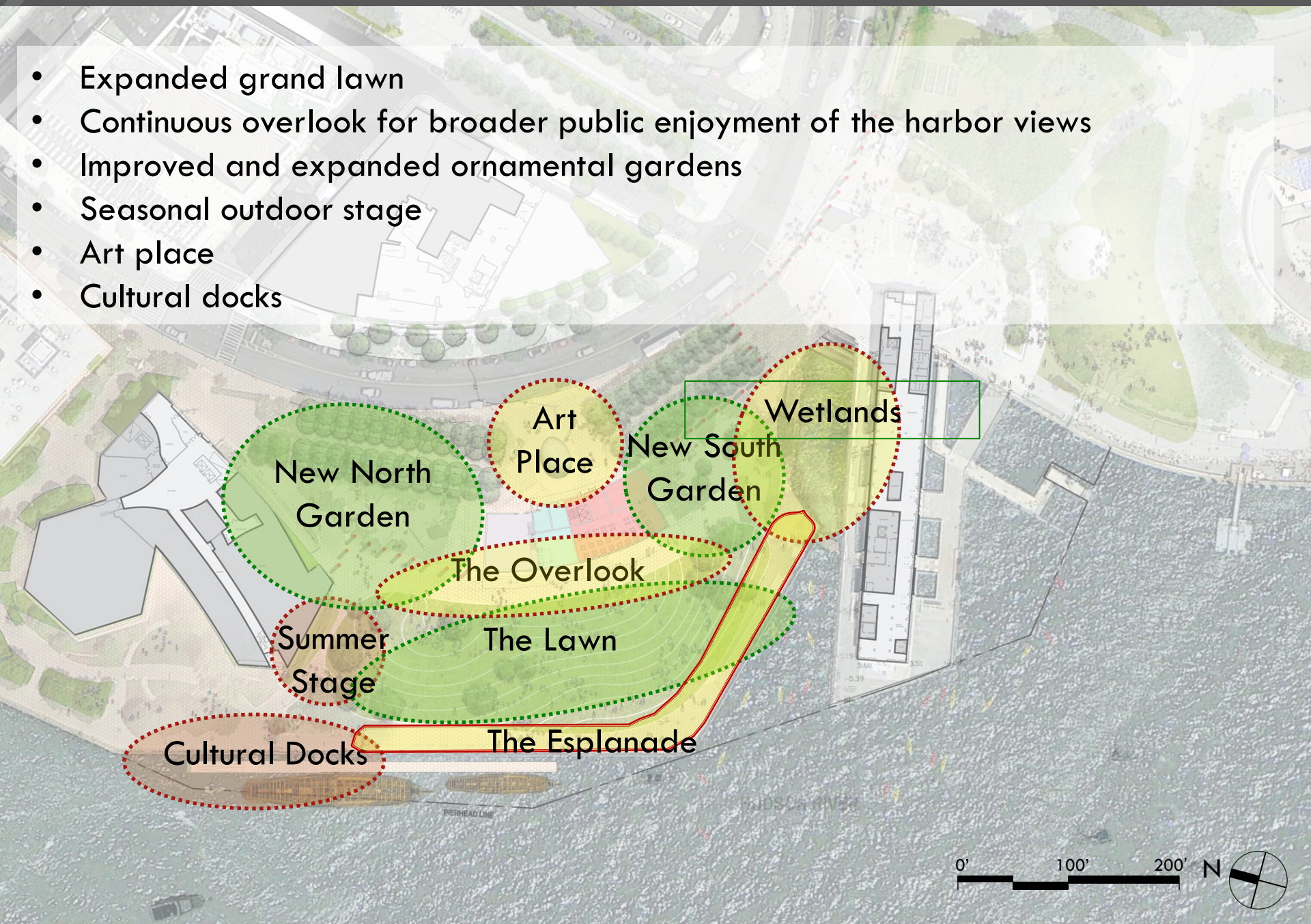
# Flexible Stage





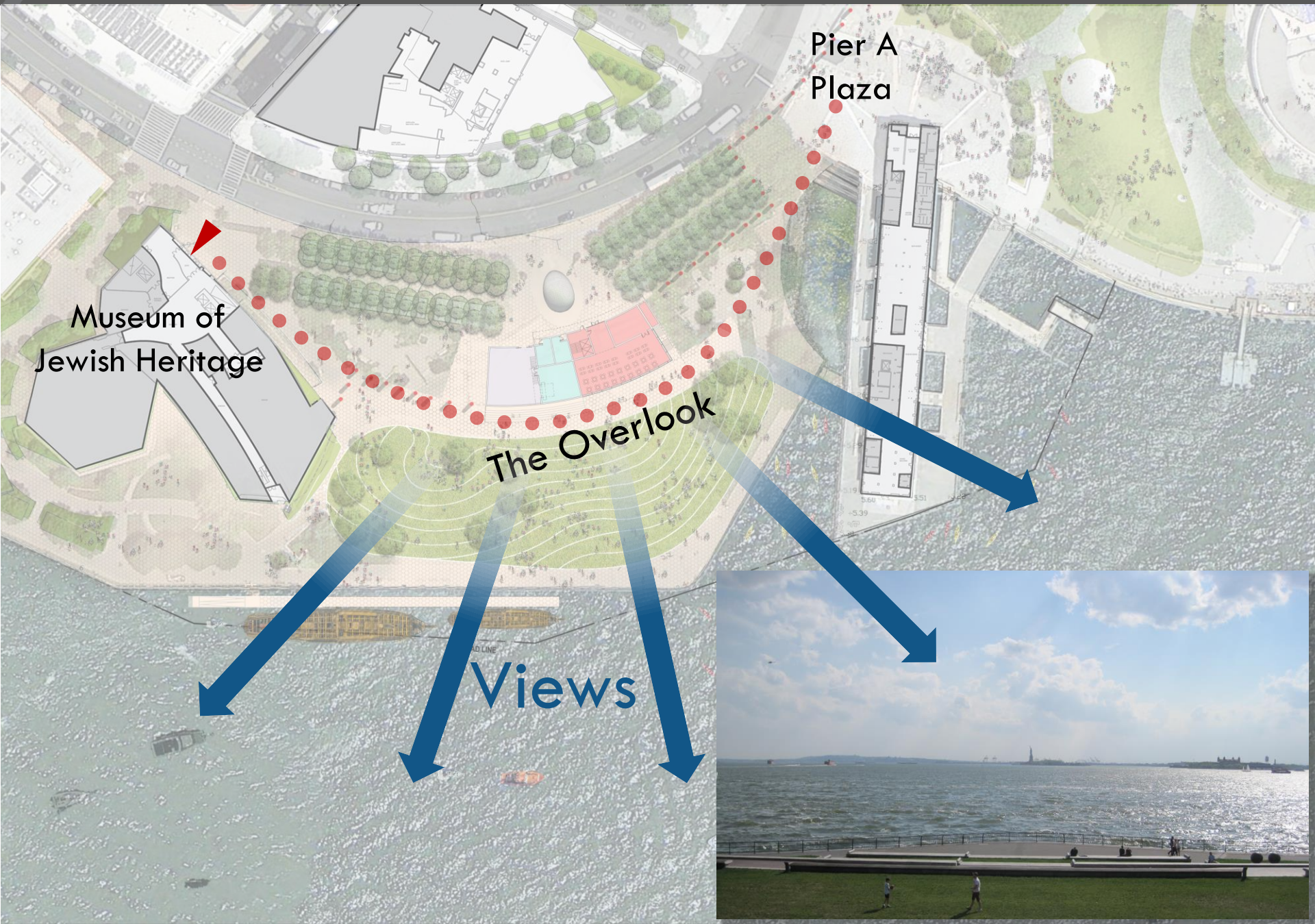
# A Series of Places

- Expanded grand lawn
- Continuous overlook for broader public enjoyment of the harbor views
- Improved and expanded ornamental gardens
- Seasonal outdoor stage
- Art place
- Cultural docks



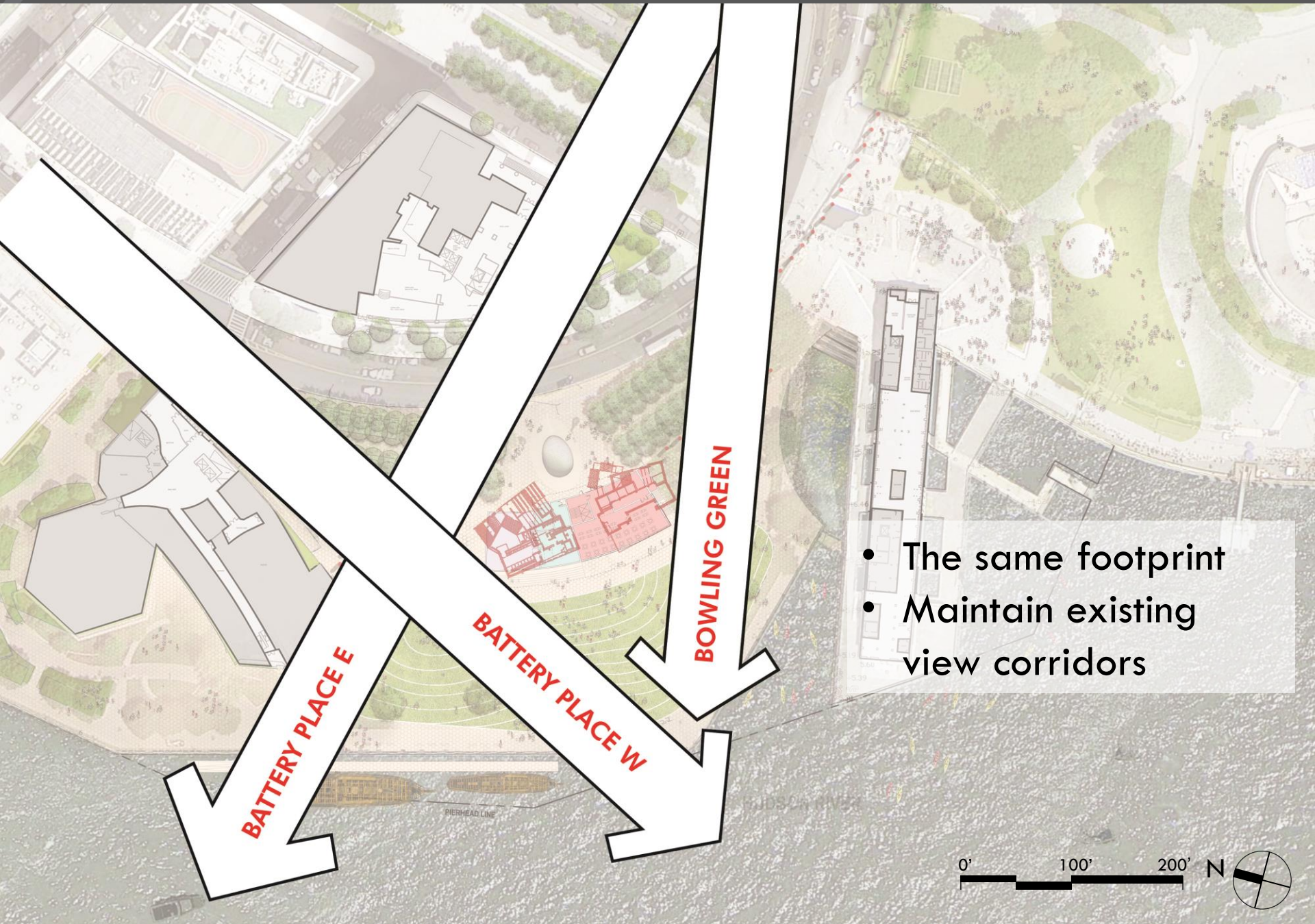


# The Overlook





# New Park Pavilion Design Principles

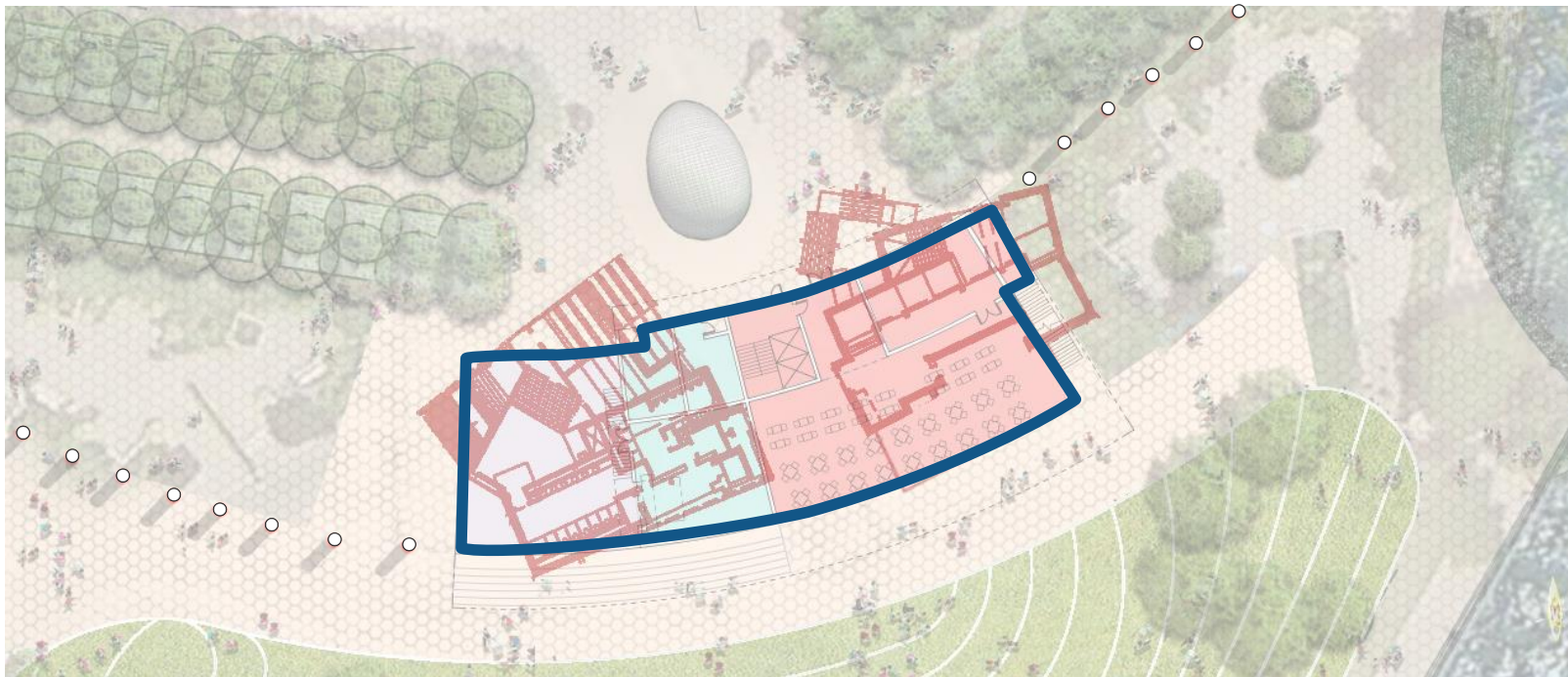


- The same footprint
- Maintain existing view corridors



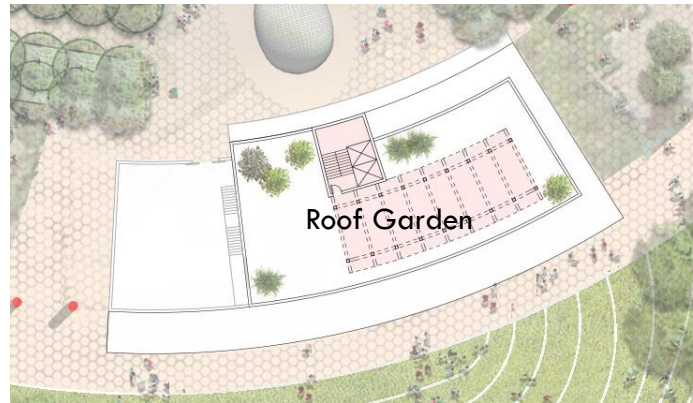


Program	Existing Usable Area	Potential Area
Food & Beverage	3,450 sf	6,000-10,000 sf
Maintenance/Security	1,665 sf	2,000 sf
Restrooms	1,750 sf	900 sf
Community Room	-	1,700 sf
Service Yard	960 sf	2,300 sf
<b>Total</b>	<b>7,825 sf</b>	<b>12,000-17,000 sf</b>



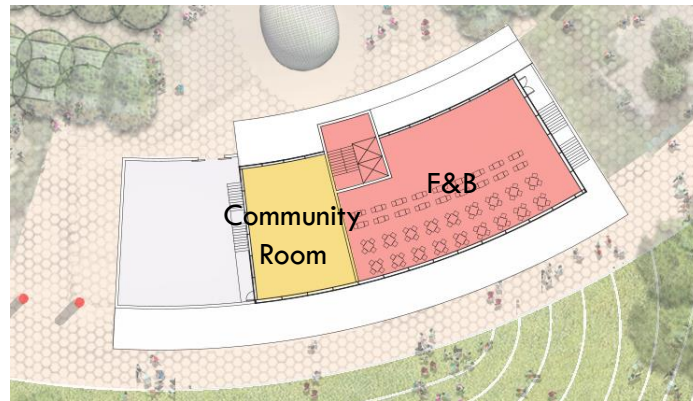
# Building Plans

## Roof



Roof Garden: 700 sf

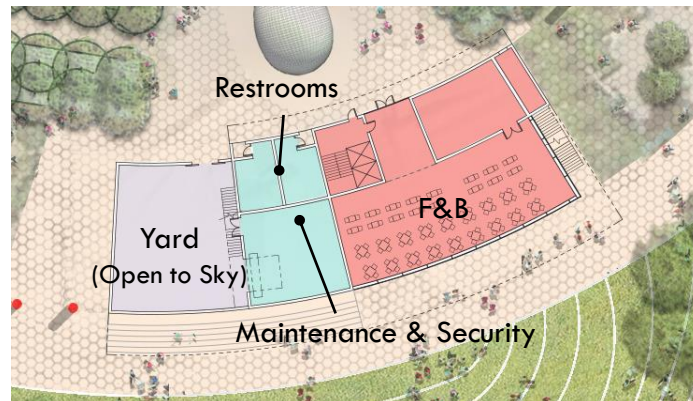
## Second Floor



F&B: 3,500 sf

Community Room: 1,700 sf

## First Floor

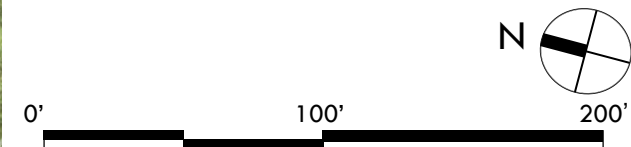


F&B: 5,000 sf

Restroom: 900 sf

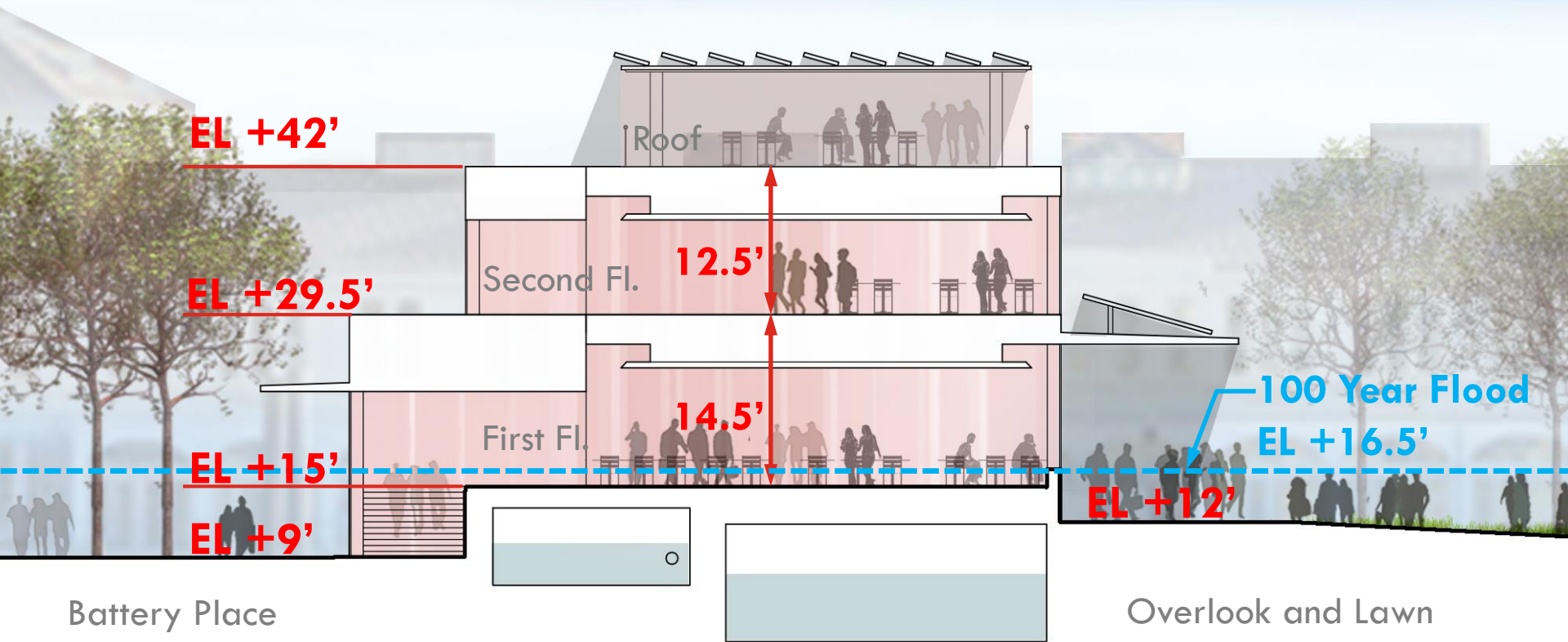
Maintenance & Security: 1,100 sf

Yard: 3,000 sf





# New Park Pavilion: Key Heights

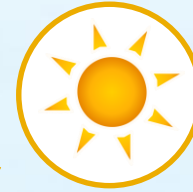


0' 16' 32'

Perkins Eastman

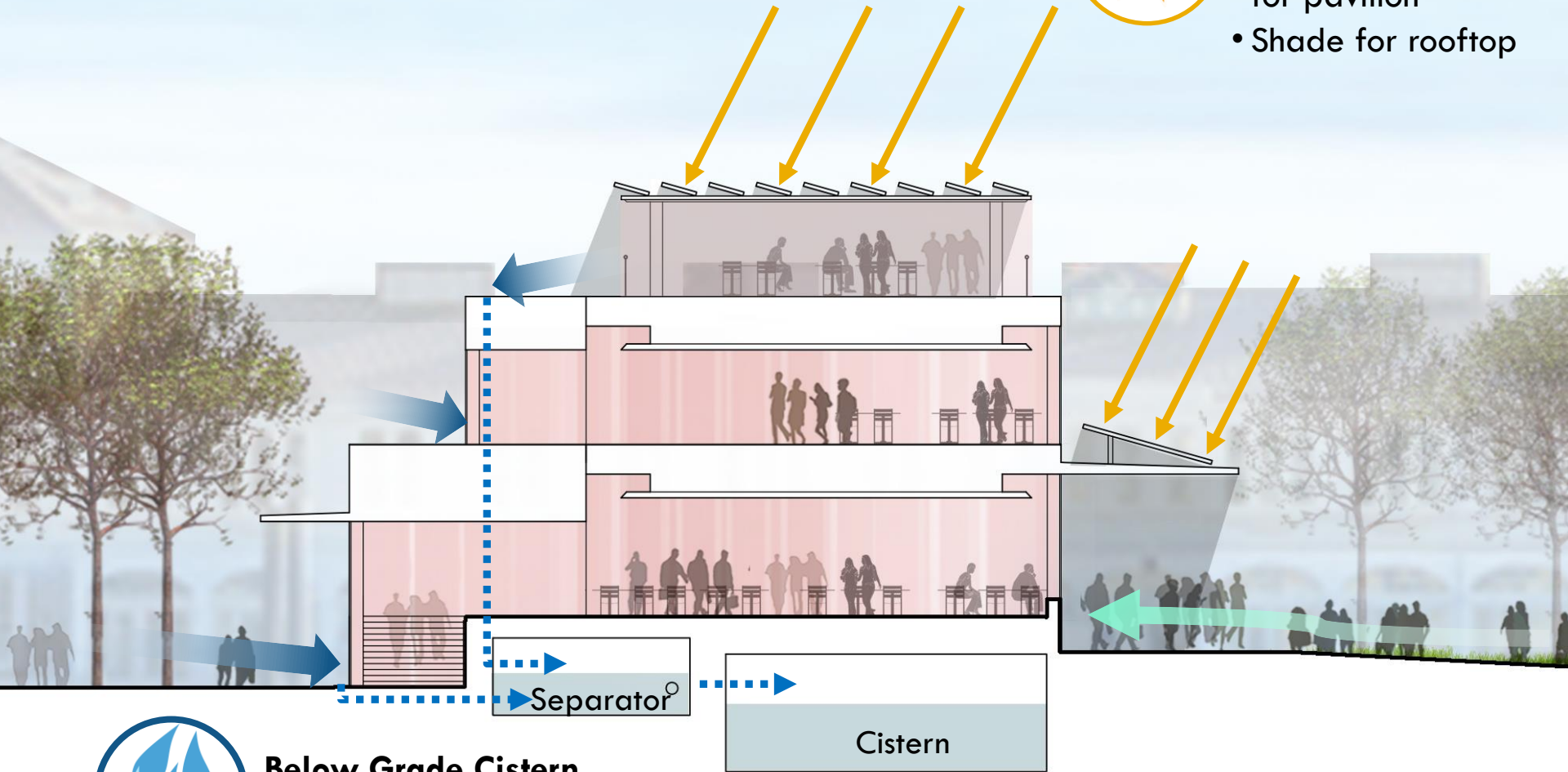


# New Park Pavilion Design Principles: A Regenerative Building



## Photovoltaic panels

- Renewable energy for pavilion
- Shade for rooftop



## Below Grade Cistern

- Stormwater management
- Greywater reuse

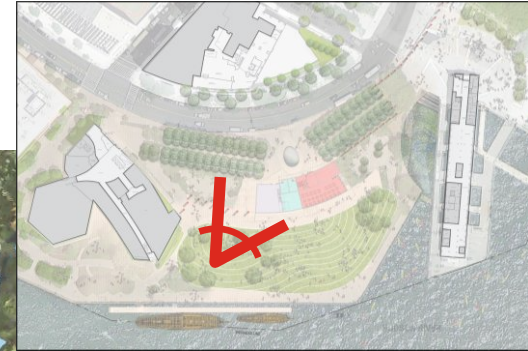
0' 16' 32'

Perkins Eastman



# View from the Lawn

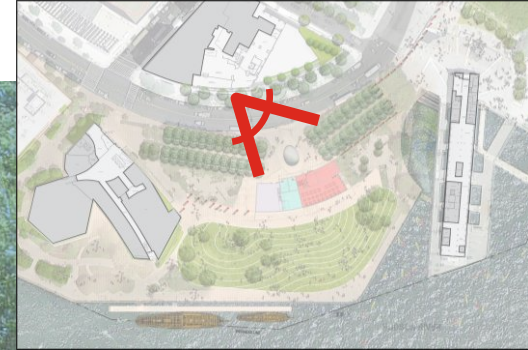
Key Plan





# View from Battery Place

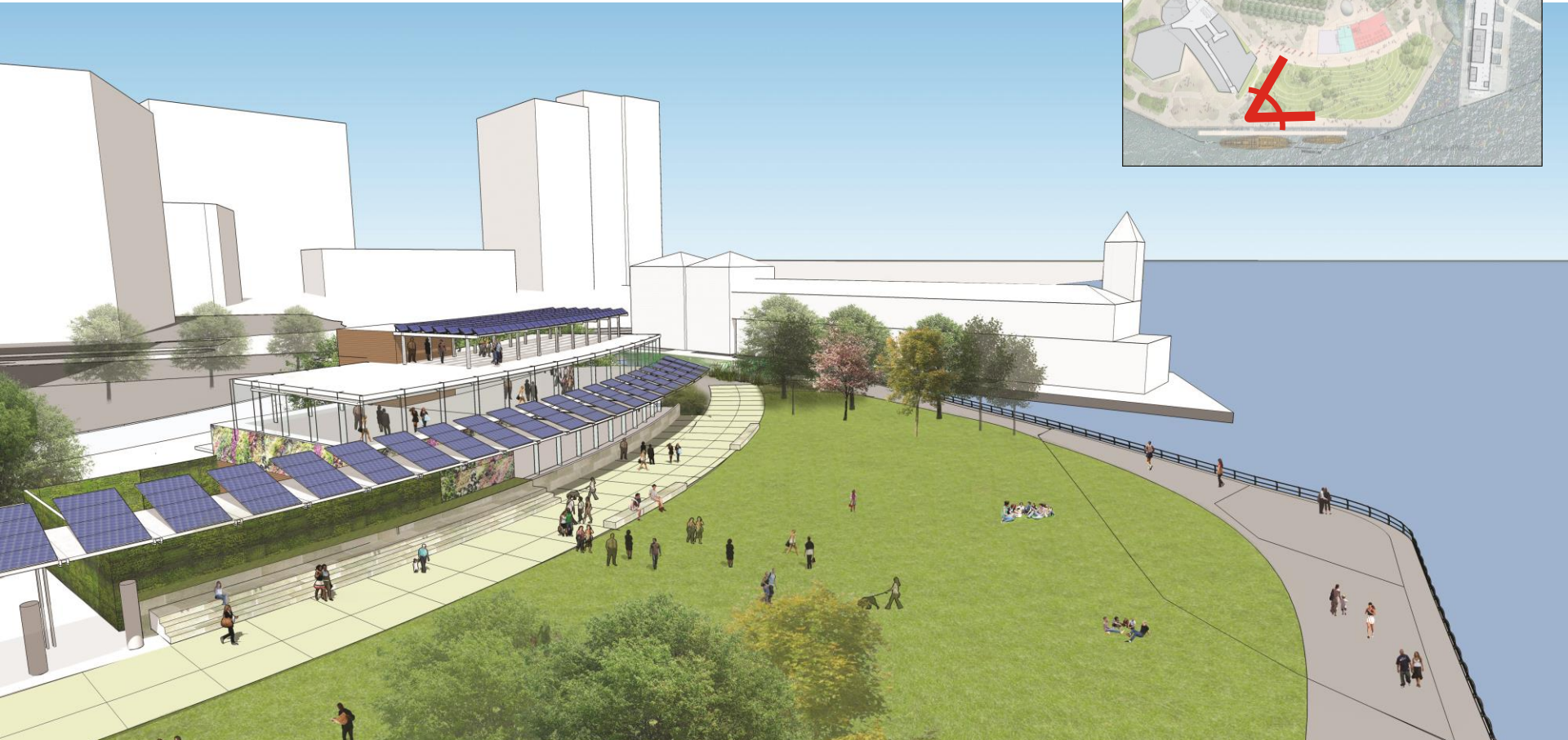
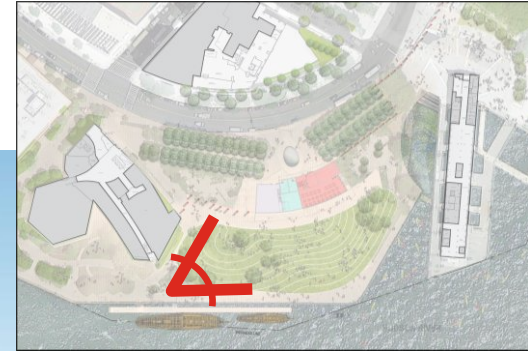
Key Plan





# View from Above

Key Plan





# The Overlook and Grand Lawn





# Design Principles

- ***Resiliency first and foremost***
- ***New facilities are resilient***
- ***The Lawn is the theme***
- ***A grand, sweeping overlook***
- ***Maintenance and support facilities are improved***
- ***Cultural docks***
- ***A continuous esplanade***
- ***Pier A is fully integrated***
- ***More Sustainable Landscape and Building***
- ***A Greener Park, with enhanced gardens***



