

WARNING: IT IS A VIOLATION OF LAW FOR ANY PERSON, UNLESS ACTING UNDER THE DIRECTION OF A PROFESSIONAL, LICENSED IN THE STATE OF THIS PROJECT, TO ALTER IN ANY WAY THESE DRAWINGS. WHERE ANY ITEM IS ALTERED, THE SUPERVISING PROFESSIONAL SHALL AFFIX TO THE ITEM HIS SEAL AND THE INSCRIPTION "ALTERED BY" FOLLOWED BY HIS SIGNATURE, THE DATE, AND A SPECIFIC DESCRIPTION OF THE ALTERATION.

200 Liberty Street, 24th Floor
New York, New York 10281

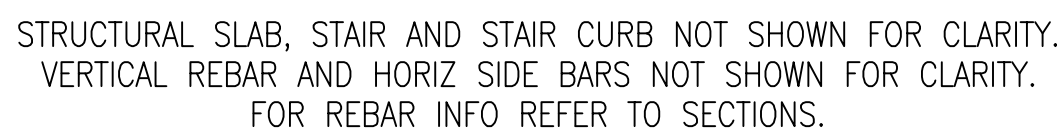
| | |
|-------------------------------|-------------------------------|
| ELECTRICAL ENGINEERING | STRUCTURAL ENGINEERING |
| WSP USA | STRA |
| One Penn Plaza, 2nd Floor | 40 Wall Street |
| 250 W 34th Street | Floor 23 |
| New York, New York 10119 | New York, New York 10005 |
| 212-465-5000 | 212-750-9000 |

| | |
|-----------------------------|----------------------------------|
| COST ESTIMATING | LIGHTING CONSULTANT |
| STUART-LYNN COMPANY | RENFOR DESIGN GROUP, INC. |
| 281 Sixth Avenue, 2nd Floor | 36 West 25th Street |
| New York, NY 10014 | Floor 11 |
| 212-209-1180 | New York, NY 10010 |
| | 212-229-9990 |

| | |
|--|--------------------------------------|
| DRAWN BY LERA | CHECKED BY LERA |
| PROJECT NUMBER 818006 | PROJECT ABBREVIATION NYCPM |
| ORIGINAL ISSUE ISSUED FOR PERMITTING AND BIDDING | DATE 16 OCT 2019 |

HEET NUMBER

- A. REMOVE EXIST CONCRETE WITH LIGHT DUTY HAND HELD CHIPPING HAMMER. DO NOT DAMAGE EXIST REINFORCEMENT.
- B. SURFACE SHALL BE ROUGHED (MIN 1/4" AMPLITUDE), CLEANED AND LANTANCE REMOVED. APPLY BONDING COMPONENT IN ACCORDANCE WITH MANUFACTURER'S INSTRUCTIONS.
- C. USE PACHOMETER TO LOCATE AND MAP EXISTING REINFORCING PRIOR TO DRILLING AND INSTALLING REBAR DOWELS AS REQUIRED TO MISS THE EXISTING REINFORCING.
- D. CHIP CONCRETE AROUND EXPOSED REBAR. CUT REBAR 3/4" FROM FACE OF CONCRETE.
CLEAN REBAR AND COAT WITH CORROSION INHIBITOR, SIKA ARMATEC 110 EPOXY OR EQUIVALENT.
PATCH WITH POLYMER REPAIR MORTAR, SIKATOP 123 IN ACCORDANCE WITH MANUFACTURER'S INSTRUCTIONS.



A SCALE: 1/2" = 1'-0"

WARNING: IT IS A VIOLATION OF LAW FOR ANY PERSON, UNLESS ACTING UNDER THE DIRECTION OF A PROFESSIONAL, LICENSED IN THE STATE OF THIS PROJECT, TO ALTER IN ANY WAY THESE DRAWINGS. WHERE ANY ITEM IS ALTERED, THE SUPERVISING PROFESSIONAL SHALL AFFIX TO THE ITEM HIS SEAL AND THE INSCRIPTION "ALTERED BY" FOLLOWED BY HIS SIGNATURE, THE DATE, AND A SPECIFIC DESCRIPTION OF THE ALTERATION.

- A. REMOVE EXIST CONCRETE WITH LIGHT DUTY HAND HELD CHIPPING HAMMER. DO NOT DAMAGE EXIST REINFORCEMENT.
- B. SURFACE SHALL BE ROUGHED (MIN 1/4" AMPLITUDE), CLEANED AND LANTANCE REMOVED. APPLY BONDING COMPONENT IN ACCORDANCE WITH MANUFACTURER'S INSTRUCTIONS.
- C. USE PACHOMETER TO LOCATE AND MAP EXISTING REINFORCING PRIOR TO DRILLING AND INSTALLING REBAR DOWELS AS REQUIRED TO MISS THE EXISTING REINFORCING.
- D. CHIP CONCRETE AROUND EXPOSED REBAR. CUT REBAR 3/4" FROM FACE OF CONCRETE.
CLEAN REBAR AND COAT WITH CORROSION INHIBITOR, SIKA ARMATEC 110 EPOXY, OR EQUIVALENT.
PATCH WITH POLYMER REPAIR MORTAR, SIKATOP 123 IN ACCORDANCE WITH MANUFACTURER'S INSTRUCTIONS.

| | |
|-------------------------------|-------------------------------|
| ELECTRICAL ENGINEERING | STRUCTURAL ENGINEERING |
| WSP USA | STRA |
| One Penn Plaza, 2nd Floor | 40 Wall Street |
| 250 W 34th Street | Floor 23 |
| New York, New York 10119 | New York, New York 10005 |
| 212-465-5000 | 212-750-9000 |

| | |
|-----------------------------|----------------------------------|
| COST ESTIMATING | LIGHTING CONSULTANT |
| STUART-LYNN COMPANY | RENFOR DESIGN GROUP, INC. |
| 281 Sixth Avenue, 2nd Floor | 36 West 25th Street |
| New York, NY 10014 | Floor 11 |
| 212-209-1180 | New York, NY 10010 |
| | 212-229-9990 |

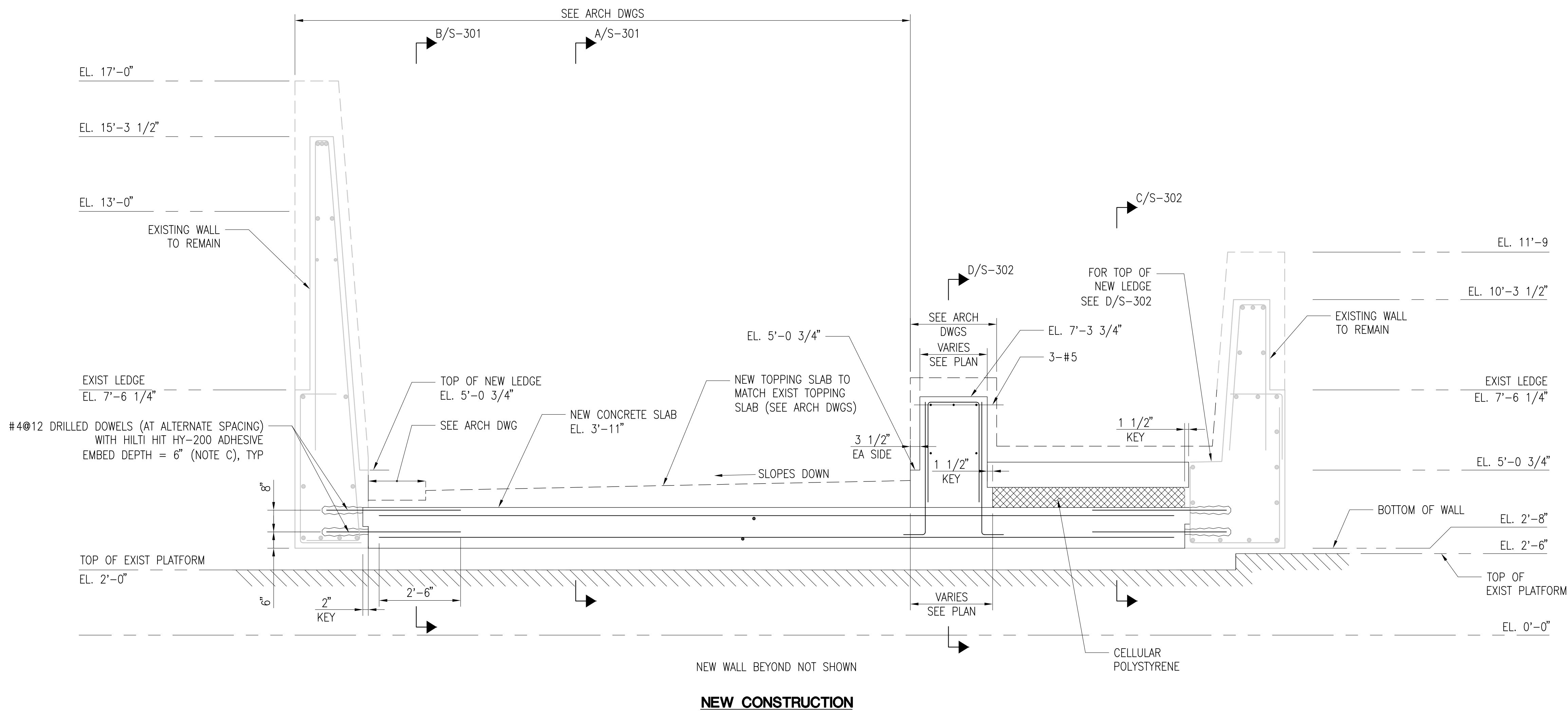
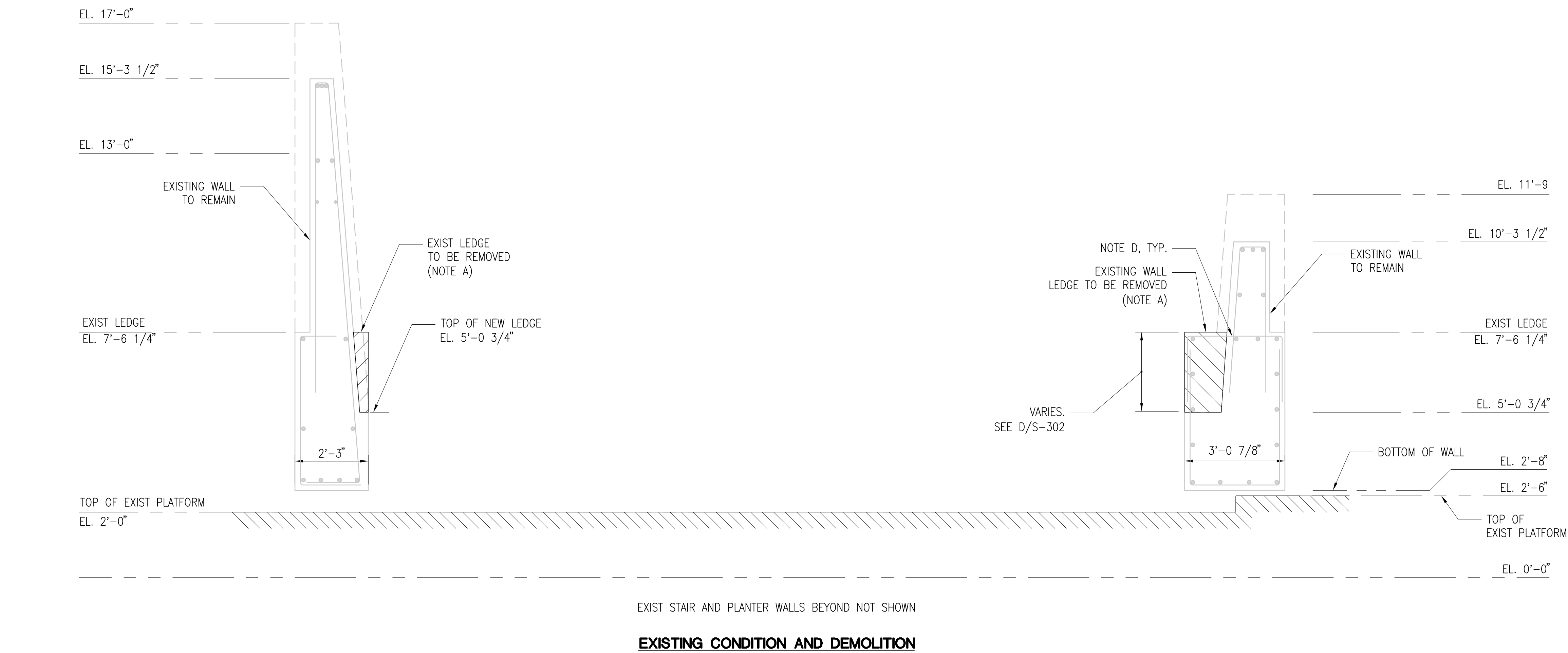
BATTERY PARK CITY AUTHORITY
NEW YORK CITY POLICE MEMORIAL EXPANSION

[illegible]

| REVISION | DESCRIPTION | DATE |
|--------------------|-------------|------|
| PROFESSIONAL SEALS | | |

| | |
|--|--------------------------------------|
| ELEVATIONS | |
| DRAWN BY LERA | CHECKED BY LERA |
| PROJECT NUMBER 818006 | PROJECT ABBREVIATION NYCPM |
| ORIGINAL ISSUE ISSUED FOR PERMITTING AND BIDDING | DATE 16 OCT 2019 |

S-202.00
SHEET NUMBER



SCALE: 1/2" = 1'-0"

FOR INFORMATION NOT SHOWN REFER TO A/S-201

© Copyright LERA CONSULTING STRUCTURAL ENGINEERS, R.L.L.P.

WARNING: IT IS A VIOLATION OF LAW FOR ANY PERSON, UNLESS ACTING UNDER THE DIRECTION OF A PROFESSIONAL LICENSED IN THE STATE OF THIS PROJECT, TO ALTER IN ANY WAY THESE DRAWINGS. WHERE ANY ITEM IS ALTERED, THE SUPERVISING PROFESSIONAL SHALL AFFIX TO THE ITEM HIS SEAL AND THE INSCRIPTION "ALTERED BY" FOLLOWED BY HIS SIGNATURE, THE DATE, AND A SPECIFIC DESCRIPTION OF THE ALTERATION.

- A. REMOVE EXIST CONCRETE WITH LIGHT DUTY HAND HELD CHIPPING HAMMER. DO NOT DAMAGE EXIST REINFORCEMENT.
- B. SURFACE SHALL BE ROUGHENED (MIN 1/4" AMPLITUDE), CLEANED AND LATANCE REMOVED. APPLY BONDING COMPONENT IN ACCORDANCE WITH MANUFACTURER'S INSTRUCTIONS.
- C. USE PACHOMETER TO LOCATE AND MAP EXISTING REINFORCING PRIOR TO DRILLING AND INSTALLING REBAR DOWELS AS REQUIRED TO MISS THE EXISTING REINFORCING.



NEW CONSTRUCTION

5 1/2"

8 5/8"

2-#6

EL. 15'-3 1/2"

3 1/2"

GRANITE CLADDING.
SEE ARCH DWGS.

#7@12 VERT EF

1" CLR
TYP

#5@12
HORIZ EF

NEW CONCRETE WALL FOR WATERPROOFING
AND STAINLESS STEEL DOWELS REFER TO
ARCH DWGS.

2-#6

2-#6
(SEE SECTION B)

LEDGE
EL. 5'-0 3/4"

3-#6

LEDGE
EL. 7'-6 1/4"

2" CLR

3-#8 CONT.
(SEE SECTION C)

#7@8
VERT EF

4-#10 CONT

2" CLR

2" KEY

2'-3"

3'-6"

#6@6 T

SEE ARCH DWGS

TOPPING SLAB AT
GUTTER SLOPES.
SEE ARCH DWGS

NEW CONCRETE
SLAB

NEW TOPPING SLAB
ELEVATION TO MATCH
EXIST TOPPING SLAB
(SEE ARCH DWGS)

EXIST CONCRETE
SLAB TO REMAIN

FINISH FLOOR
EL. 5'-5 1/4"

EXISTING TOPPING SLAB

VARIES

EL. 3'-4 1/2"

EL. 1'-10 1/2"

EL. 2'-8"

EL. 2'-0"

TOP OF EXISTING
PLATFORM

#4@9 DRILLED DOWELS
WITH HILTI HIT HY-200
ADHESIVE, EMBED DEPTH = 6"
(NOTE C)

#6@9 T&B

#7@9 B

NEW CONSTRUCTION

© Copyright LERA CONSULTING STRUCTURAL ENGINEERS, R.L.L.P.

WARNING: IT IS A VIOLATION OF LAW FOR ANY PERSON, UNLESS ACTING UNDER THE DIRECTION OF A PROFESSIONAL, LICENSED IN THE STATE OF THIS PROJECT, TO ALTER IN ANY WAY THESE DRAWINGS. WHERE ANY ITEM IS ALTERED, THE SUPERVISING PROFESSIONAL SHALL AFFIX TO THE ITEM HIS SEAL AND THE INSCRIPTION "ALTERED BY" FOLLOWED BY HIS SIGNATURE, THE DATE, AND A SPECIFIC DESCRIPTION OF THE ALTERATION.

ARCHITECTURE / ENGINEERING / INTERIORS / PLANNING / CONSULTING
Austin / Dallas / Denver / Dubai / Houston / Mexico City /
San Francisco / Washington DC / International Affiliate
Offices

| | |
|--------------------------|-------------------------------|
| CITRICAL ENGINEER | STRUCTURAL ENGINEERING |
| P USA | LERA |
| Penn Plaza, 2nd Floor | 40 Wall Street |
| W 34th Street | Floor 23 |
| New York, New York 10119 | New York, New York 10005 |
| 465-5000 | 212-750-9000 |

| | |
|--------------------------|----------------------------------|
| ESTIMATING | LIGHTING CONSULTANT |
| HART-LYNN COMPANY | RENFRO DESIGN GROUP, INC. |
| 36 West 25th Street | 36 West 25th Street |
| 6th Floor | 6th Floor |
| New York, NY 10014 | New York, NY 10014 |
| 212-229-1180 | 212-229-9990 |

200 Liberty Street, 24th Floor
New York, New York 10281

[illegible]

| SIGN | DESCRIPTION | DATE |
|------|--------------------|------|
| | PROFESSIONAL SEALS | |

| | |
|-----------------------------------|-------------------------------|
| DESIGNED BY LERA | CHECKED BY LERA |
| DRAWING NUMBER 106 | PROJECT ABBREVIATION NYCPM |
| ISSUED FOR PERMITTING AND BIDDING | DATE 16 OCT 2019 |

S-301.00
SHEET NUMBER

BATTERY PARK CITY AUTHORITY
NEW YORK CITY POLICE MEMORIAL EXPANSION
200 Liberty Street, 24th Floor
New York, New York 10281

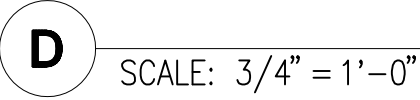
REVISION HISTORY

| REVISION | DESCRIPTION | DATE |
|--------------------|-------------|------|
| PROFESSIONAL SEALS | | |

SECTIONS AND DETAILS

| | |
|---|--------------------------------------|
| DRAWN BY LERA | CHECKED BY LERA |
| PROJECT NUMBER 818006 | PROJECT ABBREVIATION NYCPM |
| ORIGINAL ISSUE ISSUED FOR PERMITTING AND BIDDING | DATE 16 OCT 2019 |

S-302.00



EXISTING CONDITION AND DEMOLITION



NEW CONSTRUCTION



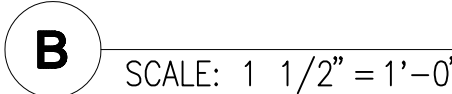
REFERENCE NOTES:

- A. REMOVE EXIST CONCRETE WITH LIGHT DUTY HAND HELD CHIPPING HAMMER. DO NOT DAMAGE EXIST REINFORCEMENT.
- B. SURFACE SHALL BE ROUGHENED (MIN 1/4" AMPLITUDE), CLEANED AND LATANCE REMOVED. APPLY BONDING COMPONENT IN ACCORDANCE WITH MANUFACTURER'S INSTRUCTIONS.
- C. USE PACHOMETER TO LOCATE AND MAP EXISTING REINFORCING PRIOR TO DRILLING AND INSTALLING REBAR DOWELS AS REQUIRED TO MISS THE EXISTING REINFORCING.

© Copyright LERA CONSULTING STRUCTURAL ENGINEERS, R.L.L.P.

WARNING: IT IS A VIOLATION OF LAW FOR ANY PERSON, UNLESS ACTING UNDER THE DIRECTION OF A PROFESSIONAL, LICENSED IN THE STATE OF THIS PROJECT, TO ALTER IN ANY WAY THESE DRAWINGS. WHERE ANY ITEM IS ALTERED, THE SUPERVISING PROFESSIONAL SHALL AFFIX TO THE ITEM HIS SEAL AND THE INSCRIPTION "ALTERED BY" FOLLOWED BY HIS SIGNATURE, THE DATE, AND A SPECIFIC DESCRIPTION OF THE ALTERATION.

- A. REMOVE EXIST CONCRETE WITH LIGHT DUTY HAND HELD CHIPPING HAMMER. DO NOT DAMAGE EXIST REINFORCEMENT.
- B. SURFACE SHALL BE ROUGHENED (MIN 1/4" AMPLITUDE), CLEANED AND LANTANE REMOVED. APPLY BONDING COMPONENT IN ACCORDANCE WITH MANUFACTURER'S INSTRUCTIONS.
- C. USE PACHOMETER TO LOCATE AND MAP EXISTING REINFORCING PRIOR TO DRILLING AND INSTALLING REBAR DOWELS AS REQUIRED TO MISS THE EXISTING REINFORCING.



WARNING: IT IS A VIOLATION OF LAW FOR ANY PERSON, UNLESS ACTING UNDER THE DIRECTION OF A PROFESSIONAL, LICENSED IN THE STATE OF THIS PROJECT, TO ALTER IN ANY WAY THESE DRAWINGS. WHERE ANY ITEM IS ALTERED, THE SUPERVISING PROFESSIONAL SHALL AFFIX TO THE ITEM HIS SEAL AND THE INSCRIPTION "ALTERED BY" FOLLOWED BY HIS SIGNATURE, THE DATE, AND A SPECIFIC DESCRIPTION OF THE ALTERATION.

BATTERY PARK CITY AUTHORITY
NEW YORK CITY POLICE MEMORIAL EXPANSION
200 Liberty Street, 24th Floor
New York, New York 10281

REVISION HISTORY

| REVISION | DESCRIPTION | DATE |
|--------------------|-------------|------|
| PROFESSIONAL SEALS | | |

| | |
|--|--------------------------------------|
| DRAWN BY LERA | CHECKED BY LERA |
| PROJECT NUMBER 818006 | PROJECT ABBREVIATION NYCPM |
| ORIGINAL ISSUE ISSUED FOR PERMITTING AND BIDDING | DATE 16 OCT 2019 |

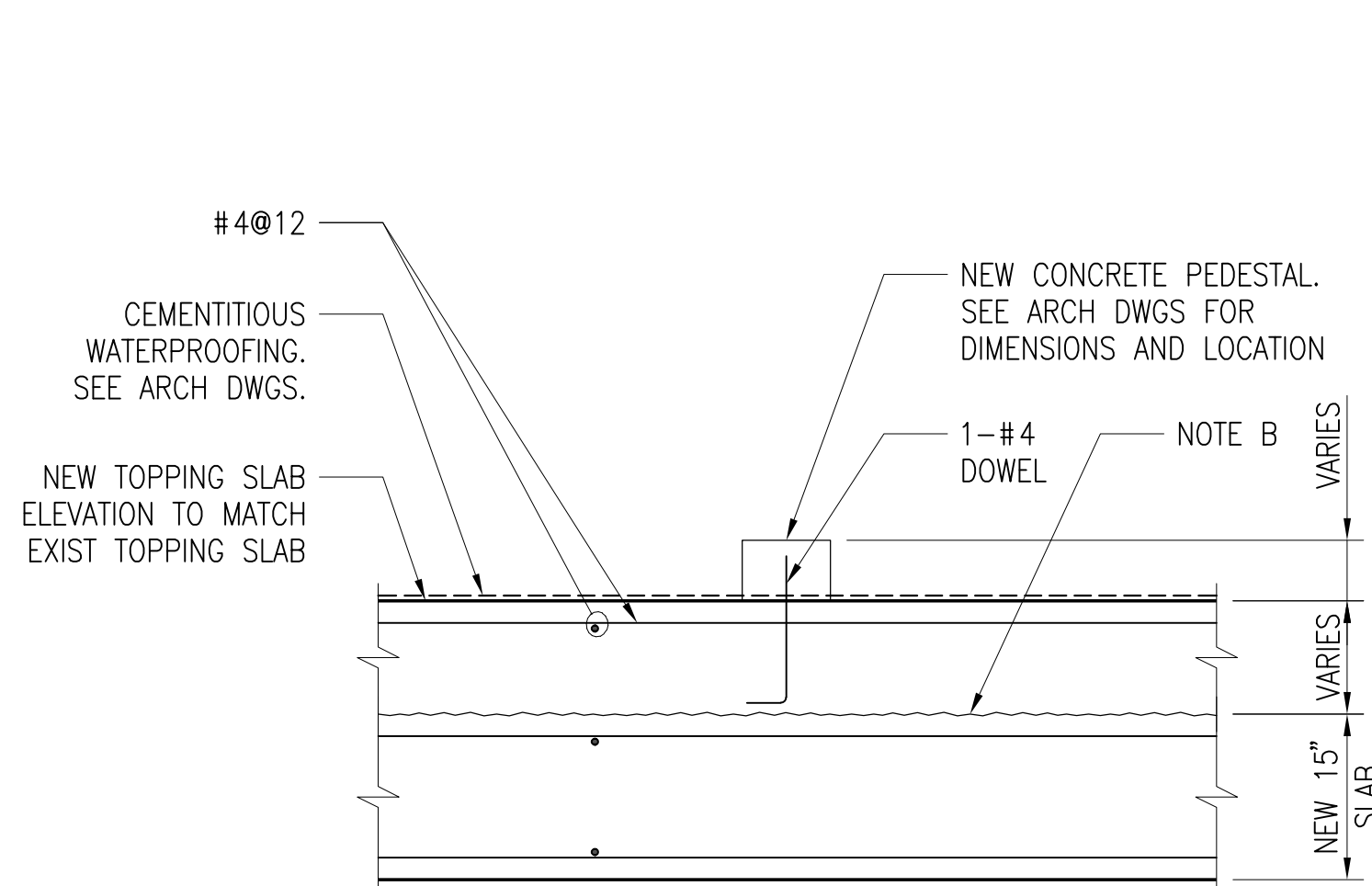
S-303.00
SHEET NUMBER

BATTERY PARK CITY AUTHORITY
NEW YORK CITY POLICE MEMORIAL EXPANSION

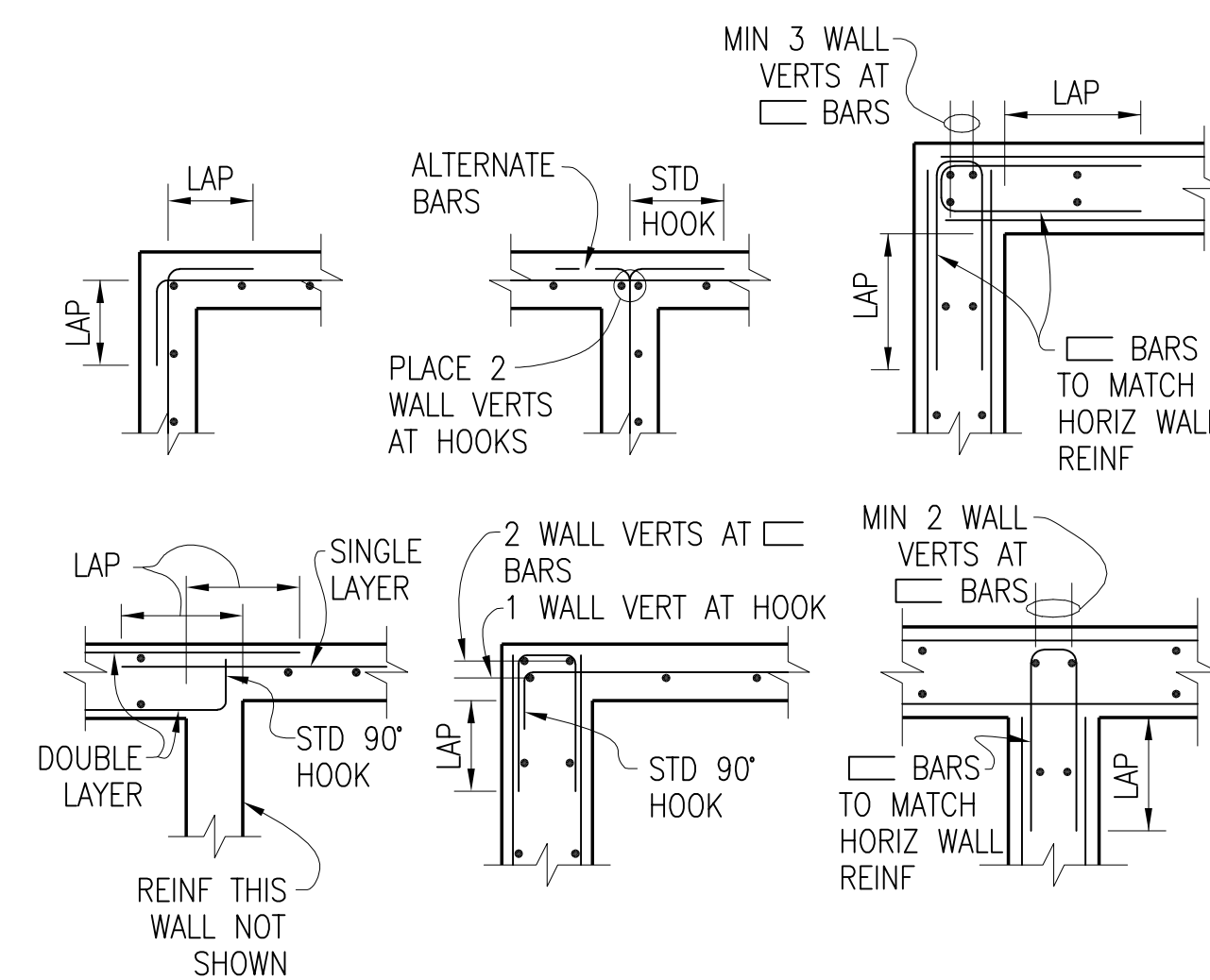
TYPICAL DETAILS

| | |
|---|-------------------------------|
| DRAWN BY LERA | CHECKED BY LERA |
| PROJECT NUMBER 818006 | PROJECT ABBREVIATION NYCPM |
| ORIGINAL ISSUE ISSUED FOR PERMITTING AND BIDDING | DATE 16 OCT 2019 |

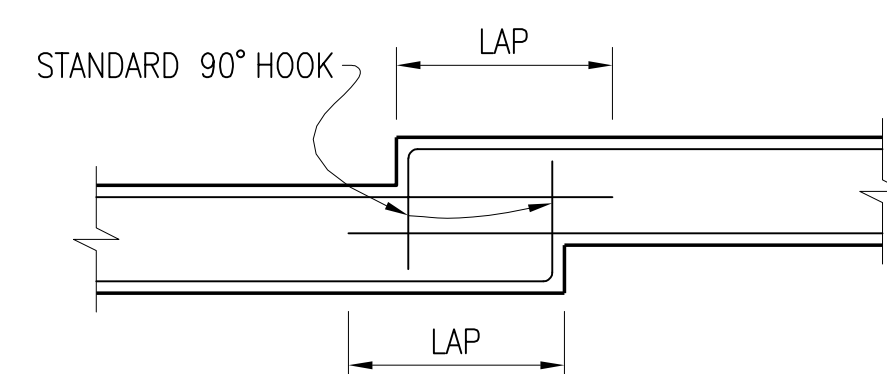
S-400.00



B TOPPING SLAB TYPICAL DETAILS
SCALE: 3/4" = 1'-0"

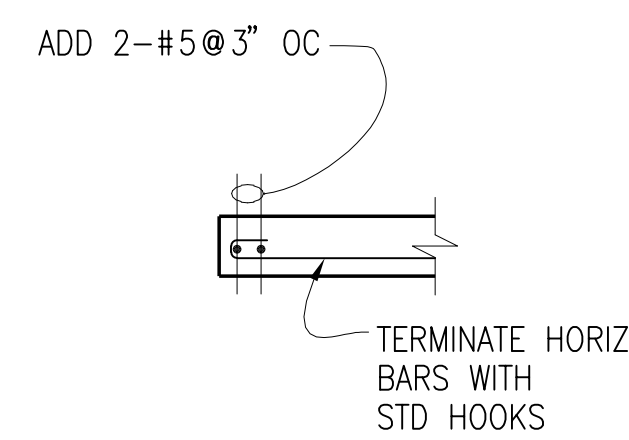


A.2 WALL INTERSECTIONS

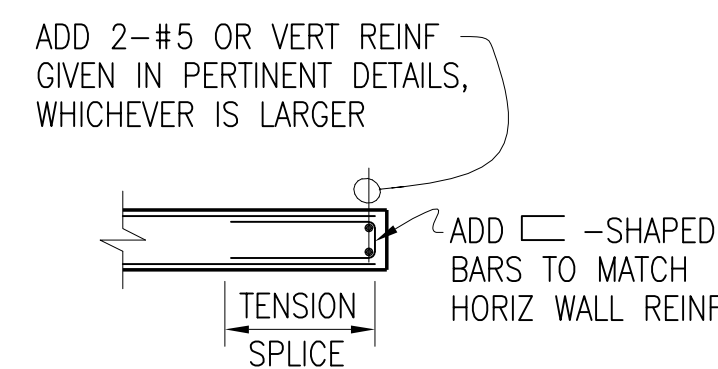


NOTES: LAP = TENSION SPLICE.

A.3 WALL OFFSET



SINGLE LAYER STEEL



DOUBLE LAYER STEEL

A.4 WALL ENDS

A WALL TYPICAL DETAILS

| MINIMUM WALL REINFORCEMENT | | | |
|---|-----------------|---------------|-------------|
| UNLESS NOTED OR SHOWN OTHERWISE, ALL SHEAR WALLS ARE TO BE REINFORCED (AS A MINIMUM) ACCORDING TO THIS TABLE. | | | |
| WALL THICKNESS | HORIZONTAL BARS | VERTICAL BARS | LOCATION |
| 6" AND UNDER | #4 @ 9 | #4 @ 12 | CENTER LINE |
| OVER 6" - 8" | #5 @ 11 | #4 @ 12 | CENTER LINE |
| OVER 8" - 10" | #5 @ 16 | #4 @ 18 | EACH FACE |
| OVER 10" - 12" | #5 @ 14 | #4 @ 18 | EACH FACE |
| OVER 12" - 14" | #5 @ 12 | #4 @ 18 | EACH FACE |
| OVER 14" - 16" | #5 @ 11 | #4 @ 16 | EACH FACE |
| OVER 16" - 18" | #5 @ 9 | #5 @ 18 | EACH FACE |
| OVER 18" - 20" | #5 @ 8 | #5 @ 18 | EACH FACE |
| OVER 20" - 24" | #5 @ 7 | #5 @ 16 | EACH FACE |
| OVER 24" - 28" | #6 @ 9 | #5 @ 15 | EACH FACE |
| OVER 28" - 32" | #6 @ 7 | #5 @ 13 | EACH FACE |
| OVER 32" - 36" | #7 @ 9 | #6 @ 16 | EACH FACE |
| OVER 36" - 40" | #7 @ 8 | #6 @ 15 | EACH FACE |
| OVER 40" - 44" | #8 @ 10 | #7 @ 18 | EACH FACE |

NOTES:

1. VERTICAL REINFORCING SHALL BE CONTINUOUS FROM STRUCTURAL LEVEL TO STRUCTURAL LEVEL, UNLESS OTHERWISE NOTED.
2. HORIZONTAL REINFORCING SPACING SHALL START AND END WITH NOT MORE THAN 1/2 THE SCHEDULED SPACING.

A.1 MINIMUM WALL REINFORCEMENT

[illegible]

| REVISION | DESCRIPTION | DATE |
|--------------------|-------------|------|
| PROFESSIONAL SEALS | | |

| | |
|--|--------------------------------------|
| DRAWN BY LERA | CHECKED BY LERA |
| PROJECT NUMBER 818006 | PROJECT ABBREVIATION NYCPM |
| ORIGINAL ISSUE ISSUED FOR PERMITTING AND BIDDING | DATE 16 OCT 2019 |

© Copyright LERA CONSULTING STRUCTURAL ENGINEERS, R.L.L.P.

WARNING: IT IS A VIOLATION OF LAW FOR ANY PERSON, UNLESS ACTING UNDER THE DIRECTION OF A PROFESSIONAL LICENSED IN THE STATE OF THIS PROJECT, TO ALTER IN ANY WAY THESE DRAWINGS. WHERE ANY ITEM IS ALTERED, THE SUPERVISING PROFESSIONAL SHALL AFFIX TO THE ITEM HIS SEAL AND THE INSCRIPTION "ALTERED BY" FOLLOWED BY HIS SIGNATURE, THE DATE, AND A SPECIFIC DESCRIPTION OF THE ALTERATION.

| | |
|-----------------------------|----------------------------------|
| ELECTRICAL ENGINEER | STRUCTURAL ENGINEERING |
| WSP USA | LERA |
| One Penn Plaza, 2nd Floor | 40 Wall Street |
| 250 W 34th Street | Floor 23 |
| New York, New York 10119 | New York, New York 10005 |
| 212-465-5000 | 212-750-9000 |
| COST ESTIMATING | LIGHTING CONSULTANT |
| STUART-LYNN COMPANY | RENFOE DESIGN GROUP, INC. |
| 281 Sixth Avenue, 2nd Floor | 36 West 25th Street |
| New York, NY 10014 | Floor 11 |
| 212-209-1180 | New York, NY 10010 |
| | 212-229-9990 |

BATTERY PARK CITY AUTHORITY
NEW YORK CITY POLICE MEMORIAL EXPANSION

200 Liberty Street, 24th Floor
New York, New York 10281

200 Liberty Street, 24th Floor
New York, New York 10281

NEW YORK CITY POLICE MEMORIAL EXPANSION

[illegible]

| REVISION | DESCRIPTION | DATE |
|--------------------|-------------|------|
| PROFESSIONAL SEALS | | |

| | |
|---|-------------------------------|
| DRAWN BY JR | CHECKED BY JY |
| PROJECT NUMBER 18006 | PROJECT ABBREVIATION NYCPM |
| ORIGINAL ISSUE ISSUED FOR PERMIT & BIDDING | DATE OCTOBER 16, 2019 |

GENERAL CONDITIONS

- THE DRAWINGS ARE GENERALLY DIAGRAMMATIC AND IT IS THE INTENT AND MEANING OF THE CONTRACT DOCUMENTS THAT THE CONTRACTOR SHALL PROVIDE AN ELECTRICAL INSTALLATION THAT IS COMPLETE AND ALL EQUIPMENT, MATERIALS AND WORKMANSHIP SHALL BE IN ACCORDANCE WITH THE REQUIREMENTS SPECIFIED, EVEN THOUGH EACH AND EVERY ITEM IS NOT SPECIFICALLY CALLED OUT OR SHOWN. THE CONTRACTOR SHALL PROVIDE ALL ELECTRICAL SUPPLIES, MATERIALS, LABOR, SUPERVISION, AND ALL OTHERS NECESSARY SO AS TO PROVIDE A COMPLETE, FUNCTIONING ELECTRICAL SYSTEM IN SAFE WORKING ORDER.
- SYMBOLS FOR VARIOUS ELEMENTS AND SYSTEMS ARE SHOWN ON THE DRAWINGS. SHOULD THERE BE ANY DOUBT REGARDING THE MEANING OR INTENT OF THE SYMBOLS USED, AN INTERPRETATION SHALL BE OBTAINED FROM THE ARCHITECT IN WRITING. THE DECISION OF THE ARCHITECT SHALL BE FINAL.
- IT SHALL BE THE RESPONSIBILITY OF EACH CONTRACTOR TO EXAMINE THE CONTRACT DOCUMENTS CAREFULLY BEFORE SUBMITTING HIS BID, WITH PARTICULAR ATTENTION TO ERRORS, OMISSIONS, CONFLICTS WITH PROVISIONS OF LAWS AND CODES HAVING JURISDICTION, CONFLICTS BETWEEN DRAWINGS OR DRAWINGS AND SPECIFICATIONS, AND AMBIGUOUS OR CONFLICTING INFORMATION. ANY SUCH DISCREPANCY SHALL BE BROUGHT IMMEDIATELY TO THE ATTENTION OF THE ARCHITECT FOR CORRECTION. THE CONTRACTOR SHALL BE RESPONSIBLE FOR OBTAINING ALL NECESSARY PERMITS AND APPROVALS. HE SHALL HAVE THEM EXPLAINED AND ADJUSTED IN WRITING BEFORE SIGNING THE CONTRACT OR PROCEEDING WITH THE WORK. THE CONTRACTOR SHALL BE RESPONSIBLE FOR OBTAINING ALL NECESSARY PERMITS AND APPROVALS TO MAKE GOOD DAMAGE OR DEFECTS IN HIS WORK OR THE RESULTS OBTAINED THEREFROM, CAUSED BY SUCH DISCREPANCY.
- WHEREVER CONFLICTS OCCUR BETWEEN DIFFERENT PARTS OF THE CONTRACT DOCUMENTS, THE GREATER QUANTITY, THE BETTER QUALITY, OR LARGER SIZE SHALL PREVAIL, UNLESS THE ARCHITECT INFORMS THE CONTRACTOR OTHERWISE IN WRITING.
- THE SCALE OF EACH DRAWING IS RELATIVELY ACCURATE; ANY DIMENSIONS SHOWN ARE APPROXIMATE TO CENTERLINE UNLESS ASSUMED BOUNDARY PERIMETER. THE CONTRACTOR SHALL OBTAIN THE NECESSARY DIMENSIONS FOR ANY EXACT TAKEOFFS FROM THE ARCHITECT. NO ADDITIONAL COST TO THE OWNER WILL BE INCURRED FOR ANY FAILURE TO OBTAIN DIMENSIONS FROM THE ARCHITECT. ANY ERROR ON THE DRAWING, ANY DEVICE OR FIXTURE ROUGHED IN IMPROPERLY AND NOT POSITIONED ON IMPLIED CENTERLINES OR AS REQUIRED BY GOOD PRACTICE MUST BE REPOSITIONED AT NO COST TO THE OWNER.
- ALL WORK AND MATERIALS SHALL BE GUARANTEED FREE FROM DEFECTS FOR A MINIMUM PERIOD OF ONE YEAR UNLESS OTHERWISE NOTED ON THE DRAWINGS. THE CONTRACTOR SHALL BE RESPONSIBLE FOR NOTIFYING THE FACILITY.
- THE CONTRACTOR IS RESPONSIBLE FOR FILING AND PAYING ALL FEES AND OBTAINING NECESSARY PERMITS AND CERTIFICATES OF INSPECTION. THE CONTRACTOR SHALL DELIVER ALL CERTIFICATES OF INSPECTION TO THE ARCHITECT. THE CONTRACTOR WILL INCLUDE IN HIS BIDDING PRICE THE COST OF ALL NECESSARY PERMITS AND CERTIFICATES OF INSPECTION.
- ONLY EXPERIENCED CRAFTSMEN KNOWLEDGEABLE IN THEIR RESPECTIVE TRADE SHALL PERFORM THE WORK DESCRIBED IN THE CONSTRUCTION DOCUMENTS.
- ALL WORK SHALL BE DONE IN ACCORDANCE WITH THE LATEST ADDITION OF NFPA STANDARD 70 (NATIONAL ELECTRICAL CODE); CONTRACTOR SHALL ALSO CONFORM TO ALL APPLICABLE LOCAL CODES AND AMENDMENTS.
- ALL ELECTRICAL EQUIPMENT, INCLUDING BUT NOT LIMITED TO SWITCHGEAR, CONTROL, WIRE, BOXES AND FITTINGS SHALL BE INSTALLED IN ACCORDANCE WITH THE REQUIREMENTS SPECIFIED FOR EXACT REQUIREMENTS.
- PROVIDE SHOP DRAWINGS FOR ENGINEERS REVIEW FOR ALL ELECTRICAL EQUIPMENT, DEVICES, AND MATERIALS PROPOSED TO BE PROVIDED UNDER THIS CONTRACT. ANY DEVIATIONS FROM ITEMS SPECIFIED SHALL BE CLEARLY IDENTIFIED AND SEPARATELY SUBMITTED WITH A FORMAL SUBSTITUTION REQUEST. REFER TO SPECIFICATIONS FOR PERMITS AND APPROVALS FOR REQUIREMENTS.
- ELECTRICAL EQUIPMENT**
- PROVIDE AN IDENTIFICATION NAMEPLATE FOR EACH ELECTRICAL EQUIPMENT, APPURTENANCE DEPICTING THE IDENTIFICATION, RACEWAY, AND THE REQUIRED TO SPECIFICATIONS FOR EXACT REQUIREMENTS.
- WEATHERPROOF ENCLOSURES SHALL BE PROVIDED FOR ALL ELECTRICAL EQUIPMENT, DEVICES, AND APPURTENANCES (ALL SYSTEMS) INSTALLED OUTDOORS.
- CONTRACTOR SHALL COORDINATE AND SCHEDULE ALL POWER OUTAGES WITH OWNER'S REPRESENTATIVE.
- CONTRACTOR SHALL NOT USE PERMANENT NAIL WHEN MAKING FIELD MARKINGS OR TEMPORARY CIRCUIT LABELS ON PANELS. CONTRACTOR SHALL USE REMOVABLE TAPES/MARKS FOR ALL TEMPORARY MARKINGS AND SHALL REMOVE THESE TEMPORARY MARKINGS AT THE CONCLUSION OF THIS PROJECT.
- CONDUIT & RACEWAY**
- ALL WORK SHALL BE COORDINATED SO THAT INTERFERENCES ARE AVOIDED. PROVIDE ALL NECESSARY OFFSETS AND PENETRATIONS THROUGH FLOORS, CEILINGS, COLUMNS, ETC. SO AS TO TAKE UP MINIMUM AMOUNT OF SPACE. ALL OFFSETS, FITTINGS, ETC. REQUIRED SHALL BE PROVIDED WITHOUT ADDITIONAL EXPENSE TO THE OWNER. WORK SHALL BE COMPLETED WITHOUT DELAY.
- CONDUIT RUNS ARE DIAGRAMMATIC IN NATURE. CONTRACTOR IS RESPONSIBLE FOR SIZING AND LOCATING PULL BOXES PER N.E.C. AND FOR COORDINATION WITH OTHER DISCIPLINES.
- CONTRACTOR SHALL PROVIDE AND INSTALL ADEQUATE SUPPORTS NECESSARY FOR THE RACEWAY SYSTEM. THIS INCLUDES BUT IS NOT LIMITED TO BLOCKING FOR SURFACE AND FLUSH MOUNTED PANELS. CONTRACTOR SHALL PROVIDE ADEQUATE STRUCTURAL RECOMMENDATIONS FOR ALL PENETRATIONS OF ALL SUPPORTING MEMBERS.
- PENETRATIONS OF WALLS, FLOORS, AND ROOFS FOR THE PASSAGE OF ELECTRICAL RACEWAYS SHALL BE APPROVED BY THE STRUCTURAL ENGINEER OR RECORD PRIOR TO THE COMMENCEMENT OF WORK. ALL SUCH PENETRATIONS SHALL BE REFERRED TO THE ARCHITECT FOR APPROVAL. THE LIMITS OF ALL SUPPORTING MEMBERS, STRUCTURAL, WATER-PROOF, AND FIRE PROOF INTEGRITY OF THE FLOOR, FLOOR, OR ROOF SYSTEM PENETRATED.
- THE CONTRACTOR SHALL SEAL ALL CONDUITS THAT PENETRATE THE FLOOR SLAB TO MAKE THEM WATER TIGHT. THE CONDUITS SHALL BE DRIED PRIOR TO INSTALLATION OF WIRE/CABLE AND SHALL BE SEALED AT TERMINATIONS.
- ALL PENETRATIONS THROUGH FIRE RATED WALLS OR PARTITIONS SHALL BE MADE IN ACCORDANCE WITH UL 483 FIRE RESISTANCE DIRECTORY. PENETRATIONS SHALL BE SLEEVED AND SEALED WITH A UL APPROVED FIRE RESISTANT GROUT. REFER TO THE ARCHITECT FOR APPROVAL.
- ALL EMPTY CONDUIT SYSTEMS SHALL CONTAIN A PULL WIRE FOR FUTURE PULLING OF CONDUCTORS.
- BRANCH CIRCUITS AND FEEDERS**
- UNLESS NOTED OTHERWISE, ALL CIRCUITS 100 OR LESS SHALL BE MINIMUM #12 AWG WIRE SIZE. CIRCUITS OVER 100 BUT LESS THAN 200 SHALL BE MINIMUM #10 AWG WIRE SIZE. CIRCUITS OVER 200 SHALL BE MINIMUM #8 AWG WIRE SIZE.
- ALL POWER WIRING SHALL BE INSTALLED IN CONDUIT. CONDUCTOR SIZES #12 AWG AND SMALLER SHALL BE SOLID. CONDUCTOR SIZES #10 AWG AND LARGER MAY BE STRANDED.
- A SEPARATE INSULATED EQUIPMENT GROUNDING CONDUCTOR SHALL BE PULLED WITH THE CIRCUIT CONDUCTORS THROUGHOUT THE ENTIRE LENGTH OF THE RACEWAY, OR A CABLE RACEWAY, OR A CABLE RACEWAY OR SHEATH SHALL NOT BE USED AS AN EQUIPMENT GROUNDING CONDUCTOR.
- CONTRACTOR SHALL GROUND ALL EQUIPMENT AND ELECTRICAL SYSTEM PER N.E.C.

| | |
|----|---|
| A. | PROVIDE UPON SITE, TYPE-WRITTEN PANEL DIRECTORY OF ALL CORRECT CIRCUITS WITH LOAD DEFINITIONS FOR EACH PANEL BOARD. DIRECTORY SHALL BE LOCATED INSIDE PANEL DOOR. |
| B. | INFORMATION PROVIDED ON THESE DRAWINGS HAS BEEN TAKEN FROM DESIGN DRAWINGS AND FIELD OBSERVATIONS. CONTRACTOR SHALL FIELD VERIFY ALL EXISTING CONDITIONS PRIOR TO PRICING AND COMMENCEMENT OF WORK. |
| C. | PROVIDE FOR ANY AND ALL DEMOLITION WORK NECESSARY TO ACCOMMODATE ALL NEW CONSTRUCTION, INCLUDING ARCHITECTURAL, MECHANICAL, ELECTRICAL, PLUMBING OR ELECTRONIC. |
| D. | IF REMEDIATION IS REQUIRED TO INSTALL AN ITEM, THE CONTRACTOR SHALL RESTORE THE AREA TO PREVIOUS CONDITION OR REPLACE DAMAGED ITEMS WITH NEW ITEMS TO MATCH EXISTING. |
| E. | DESIGNATION "X" REPRESENTS EXISTING DEVICE OR LIGHT FIXTURE TO REMAIN OR CIRCLED AND SWITCHED UNLESS NOTED OTHERWISE. EXISTING LIGHT FIXTURES SHALL BE CLEANED AND REPAIRED AS REQUIRED. |
| F. | CONTRACTOR SHALL REMOVE ALL WIRING ASSOCIATED WITH DEVICES AND EQUIPMENT TO BE REMOVED AND/OR RELOCATED UNLESS NOTED OTHERWISE. PROVIDE AND INSTALL ALL NECESSARY DEVICES, EQUIPMENT AND MATERIALS REQUIRED TO MAINTAIN SERVICE TO ALL "EXISTING" TO REMAIN DEVICES AND EQUIPMENT THAT MAY BE INTERRUPTED DURING DEMOLITION. |
| G. | SPACE ALLOCATIONS FOR MATERIALS, EQUIPMENT AND DEVICES HAVE BEEN MADE ON THE BASIS OF PRESENT AND KNOWN FUTURE REQUIREMENTS AND THE DIMENSIONS OF ITEMS OF EQUIPMENT OR DEVICES OF A PARTICULAR MANUFACTURER, WHETHER SPECIFIED OR NOT. CONTRACTOR SHALL VERIFY THAT ALL MATERIALS, EQUIPMENT AND DEVICES PROPOSED FOR USE ON THIS PROJECT ARE WITHIN THE CONSTRAINTS OF THE ALLOCATED SPACE. |
| H. | CONTRACTOR SHALL BE RESPONSIBLE TO COORDINATE ALL SERVICE OUTAGES REQUIRED TO PROPERLY EXECUTE THIS PROJECT WITH OWNERS AUTHORIZED REPRESENTATIVE AND UTILITY COMPANY. PERFORM ALL WORK AS DIRECTED. CONTRACTOR SHALL BE ALLOWED TO BEGIN WORK AFTER THE AGREED PREMIUM TIME. TEMPORARY EXTRA EQUIPMENT AND MATERIALS FOR A COMPLETE AND OPERABLE INSTALLATION. |

| | | | |
|------------|----------------------------------|-------------|--------------------------------------|
| AFB | ABOVE FINISHED CEILING | MH | MANHOLE |
| AFB | ABOVE FINISHED FLOOR | MLO | MAN LUGS ONLY |
| AFB | AUTOMATIC FIRE JURISDICTION | MLO | MOUNTED MOUNTED |
| ATS | AUTOMATIC TRANSFER SWITCH | MW | MICROWAVE |
| BSC | BELOW FINISHED CEILING | N | NEW DEVICE |
| CB | BOTTOM OF FINISHED CEILING | NC (N.C.) | NOT NORMALLY CLOSED |
| CB | CONDUIT | NFC | NONAURAL ELECTRIC CODE |
| C/C OR CTR | CIRCUIT BREAKER | NF | NOMINATED |
| CKR | CIRCUIT | NIGHT | NIGHT IN CONTRACT |
| CCTV | CLOSED CIRCUIT T.V. | NO (N.O.) | NORMALLY OPEN |
| CLG | CEILING | PL | PLUG BOX |
| CR | CRITICAL (EMERGENCY SYSTEM) | PL GMD | PANEL |
| CUH | CABINET HEATER | PMB | PANEL |
| EC | EMPTY CONDUIT | PWR | POWER |
| ELEC | ELECTRIC | R | RELOCATED DEVICE |
| EM | EMERGENCY | RCP(T)S (OR | RECEPTACLE(S) |
| EMS | ENERGY MANAGEMENT SYSTEM | RECEPT | |
| EP | EXPANSION | REF | REFRIGERATOR |
| EWC | ELECTRIC WATER COOLER | REF | RETURN AIR |
| F | FIXING | SE | SMOKE EXHAUST FAN |
| F | FUSE | SF | SUPPLY AIR FAN |
| F | FIRE ALARM | SI (S.O.) | SPACE UNIT |
| FACP, FAP | FIRE ALARM CONTROL PANEL | SP | SHUNT |
| FCU | FAN COIL UNIT | ST (S.T.) | START TRIP |
| FL | FLUORESCENT | SW | SWITCH |
| FLR | FLOOR | TEL | TELEPHONE |
| FLUR | FLUORESCENT | TF | TRANSFER FAN |
| FT | FAN TERMINAL UNIT | TRF | TRANSFER FAN |
| FS OR FT | FAN TERMINAL UNIT | TV | TELEVISION |
| FUT | FUTURE | TVSS | TRANSIENT VOLTAGE SURGE |
| G, GND | GROUND (EQUIPMENT) | US | SUPPRESSION |
| GEN | GENERAL EXHAUST FAN | UGFLOOR | UNDERGROUND |
| GEN | GENERATOR | UG | UNDERGROUND |
| GFCI, GFI | GROUND FAULT CIRCUIT INTERRUPTER | UH | UNIT HEATER |
| HV | HIGH VOLTAGE | UN (UN.O.) | UNIT NOT USED OR INDICATED OTHERWISE |
| HW | HEAT TRACE | V | VOLTAGE |
| ICAT | INTERFERING CAPACITY | V | VARIABLE FREQUENCY DRIVE |
| INCAND | INCANDESCENT | VP | VAPOR PROOF |
| IG | ISOLATED GROUND | VV | VARIABLE VOLUME UNIT |
| IG | GROUND FAULT INDICATION ONLY | WR | WIRE |
| JB | JUNCTION BOX | W | WITH |
| KEF | KITCHEN EXHAUST FAN | WG | WIRE GAUGE |
| LTG | LIGHTING | WP | WEATHER PROOF |
| LTS | LIGHTS | W | WATER TIGHT |
| LV | LOW VOLTAGE | WFM | WEATHERPROOF MOUNTING |
| MATV | MASTER ANTENNA | -xx | TRANSFORMER INCHES, AFTT. UN |
| MCB | MAIN CIRCUIT BREAKER | UCR | UNDER CABLE REFRIGERATOR |
| MCC | MAIN CONTROL CENTER | | |
| MDC | MAIN DISTRIBUTION PANEL | | |

| | |
|---------------------------------|-------------------------|
| <u>LOCATION:</u> | |
| CITY/STATE | NEW YORK CITY, NEW YORK |
| <u>APPLICABLE CODES:</u> | |
| BUILDING | 2015 IBC |
| MECHANICAL | 2015 IMC |
| PLUMBING | 2015 IPC |
| ENERGY | 2015 IECC |
| ELECTRICAL | 2017 NEC |
| FIRE | 2015 IFC |
| <u>LATITUDE:</u> | |
| DEG. N. LAT. | 40.71°N |
| <u>ELEVATION:</u> | |
| FT. ABOVE SEA LEVEL | 33' |

ALL SYMBOLS SHOWN MAY NOT APPEAR IN ALL DRAWINGS. SYMBOLS ARE SHOWN SCHEMATIC AND MAY NOT BE TO SCALE.

| SYMBOL | DESCRIPTION | MNTG. HT. UNO |
|--------|---|----------------------|
| | SINGLE RECEPTACLE - 20A/125V/2P/3WG NEMA 5-20R | 18" AFF |
| | DUPLEX RECEPTACLE - 20A/125V/2P/3WG NEMA 5-20R | 18" AFF |
| | DUPLEX RECEPTACLE ON EMERGENCY CIRCUIT | 18" AFF |
| | DUPLEX RECEPTACLE GFCI - 20A/125V/2P/3WG NEMA 5-20R | 18" AFF |
| | DUPLEX RECEPTACLE MOUNTED HORIZONTALLY | 18" AFF |
| | DUPLEX RECEPTACLE, TAMPER PROOF - 20A/125V/2P/3WG NEMA 5-20R | 18" AFF |
| | DUPLEX RECEPTACLE, GFCI, TAMPER RESISTANT, WEATHER RESISTANT, HOUSED IN A "WEATHERPROOF"-WHILE-IN-USE' ENCLOSURE - 20A/125V/2P/3WG NEMA 5-20R | 18" AFF |
| | DUPLEX RECEPTACLE ROUTED THROUGH RF FILTER | 18" AFF |
| | DUPLEX RECEPTACLE FOR PATIENT MONITORING - PROVIDE AT SAME HEIGHT AS DATA OUTLET | -- |
| | DUPLEX RECEPTACLE FOR FETAL MONITORING - PROVIDE AT SAME HEIGHT AS DATA OUTLET | -- |
| | 20A "CLOCK" TYPE RECEPTACLE (FOR U.C. REFS AND MICROWAVES) | AS REQUIRED |
| | DUPLEX RECEPTACLE, TELEVISION - PROVIDE UNDER SAME COVERPLATE AS CABLE OUTLET - REFER TO ARCH. ELEVATIONS FOR MOUNTING HEIGHT. | 84" |
| | DUPLEX RECEPTACLE, TELEVISION - PROVIDE UNDER SAME COVERPLATE AS CABLE OUTLET - REFER TO ARCH. ELEVATIONS FOR MOUNTING HEIGHT. | 84" |
| | DUPLEX RECEPTACLE MOUNTED ABOVE COUNTERTOP | 8" AFC OR 42" AFF |
| | DUPLEX RECEPTACLE MOUNTED ABOVE COUNTERTOP ON EMERGENCY CIRCUIT | 8" AFC OR 42" AFF |
| | DUPLEX RECEPTACLE MOUNTED ABOVE COUNTERTOP ON EMERGENCY CIRCUIT (TWO DUPLEX RECEPTABLES UNDER ONE COVERPLATE) | 18" AFF |
| | QUADRAPLEX RECEPTACLE MOUNTED ABOVE COUNTERTOP (TWO DUPLEX RECEPTABLES UNDER ONE COVERPLATE) | 18" AFF |
| | QUADRAPLEX RECEPTACLE MOUNTED ABOVE COUNTERTOP ON EMERGENCY CIRCUIT (TWO DUPLEX RECEPTABLES UNDER ONE COVERPLATE) | 8" AFC OR 42" AFF |
| | QUADRAPLEX RECEPTACLE MOUNTED ABOVE COUNTERTOP ON EMERGENCY CIRCUIT (TWO DUPLEX RECEPTABLES UNDER ONE COVERPLATE) | 8" AFC OR 42" AFF |
| | SPECIAL PURPOSE RECEPTACLE (NEMA NO. AS INDICATED) | 18" AFF |
| | FLOOR MOUNTED RECEPTACLE IN FLOOR BOX OR POKE-THRU DEVICE - FLUSH MOUNTED, UNO | FLUSH W/ FLR SURFACE |
| | CEILING MOUNTED RECEPTACLE - CONFIGURATION UNO | FLUSH W/ CLG SURFACE |
| | JUNCTION BOX - SIZE & MOUNTING AS REQUIRED | AS REQUIRED |
| | WALL MOUNTED JUNCTION BOX FOR DATA/TELEPHONE - SIZE & MOUNTING AS REQUIRED | AS REQUIRED |
| | POWER POLE | -- |
| | DISCONNECT SWITCH (X=FRAME SIZE, Y=FUSE SIZE, Z=NUMBER OF POLES) | AS REQUIRED |
| | DISCONNECT SWITCH NON-FUSED (X=FRAME SIZE, Z=NUMBER OF POLES) | AS REQUIRED |
| | ENCLOSED CIRCUIT BREAKER (X=TRIP RATING, Z=NUMBER OF POLES) | AS REQUIRED |
| | MOTOR STARTER FVNR UNO (#=NEMA SIZE) | AS REQUIRED |
| | COMBINATION MOTOR CONTROLLER / DISCONNECT SWITCH | AS REQUIRED |
| | MANUAL MOTOR STARTER SWITCH WITH THERMAL OVERLOAD AND PILOT LIGHT | AS REQUIRED |
| | EMERGENCY POWER OFF BUTTON - WALL MOUNTED | AS REQUIRED |
| | CIRCUIT CONDUCTOR INDICATION (EQUIPMENT GROUND, NEUTRAL, PHASE) | -- |
| | CIRCUIT HOMERUN TO PANELBOARD (2#12, #12G, 3/4", 20A/1P CB UNO) | -- |
| | CONDUIT INSTALLED IN CEILING SPACE OF FLOOR BELOW. | -- |
| | THREE SINGLE POLE DEVICE CIRCUIT NUMBERS. REFER TO PANEL SCHEDULES FOR ADDITIONAL INFORMATION. | -- |
| | MULTI-POLE DEVICE CIRCUIT NUMBERS. REFER TO PANEL SCHEDULES FOR ADDITIONAL INFORMATION. | -- |
| | 208Y/120V PANELBOARD | -- |
| | 480Y/277V PANELBOARD | -- |
| | 208Y/120V DISTRIBUTION PANELBOARD | -- |
| | 480Y/277V DISTRIBUTION PANELBOARD | -- |
| | ISOLATION PANEL | -- |
| | SWITCHBOARD | -- |
| | STEP-DOWN TRANSFORMER | -- |
| | AUTOMATIC TRANSFER SWITCH | -- |
| | BY-PASS / ISOLATION AUTOMATIC TRANSFER SWITCH | -- |
| | GROUND BAR | -- |
| | ROOM GROUND BAR | -- |
| | PATIENT GROUND BAR | -- |
| | GENERATOR ANNUNCIATOR PANEL | AS REQUIRED |
| | AUTOMATIC TRANSFER SWITCH ANNUNCIATOR PANEL | AS REQUIRED |
| | TRANSIENT VOLTAGE AND SURGE SUPPRESSOR DEVICE | AS REQUIRED |
| | AREA ALARM PANEL | AS REQUIRED |
| | FUEL OIL ALARM PANEL | AS REQUIRED |
| | MEDICAL GAS ALARM PANEL - PANEL PROVIDED UNDER DIV 15 | AS REQUIRED |
| | DECONTAMINATION HOLDING TANK ALARM - PANEL PROVIDED UNDER OTHER DIVISION | AS REQUIRED |



A. REFER TO SHEET E.000 FOR LEGENDS, NOTES AND ABBREVIATIONS.

- 1 EXISTING DIMMER PANEL SHALL BE REPLACED IN PLACE WITH NEW DIMMER BRANCH PANEL AND NEW LIGHTING CONTROL PANEL.
- 2 EXISTING JUNCTION BOX IN OLD POLICE MEMORIAL VAULT.
- 3 EXISTING JUNCTION BOX AND RACEWAY. REUSE FOR NEW LIGHTING CIRCUIT WHERE POSSIBLE AND PROVIDE NEW WIRING.
- 4 ALL LIGHT FIXTURES ARE SHOWN FOR REFERENCE ONLY AND ARE SPECIFIED BY LIGHTING DESIGNER. REFER TO LIGHTING DRAWINGS FOR FIXTURE SCHEDULE AND DETAILS.

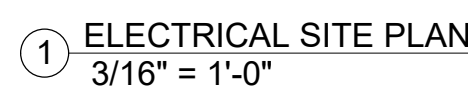
| | |
|-----------------------------|----------------------------------|
| ELECTRICAL ENGINEER | STRUCTURAL ENGINEERING |
| WSP USA | LERA |
| One Penn Plaza, 2nd Floor | 40 Wall Street |
| 250 W 34th Street | 11th Floor |
| New York, New York 10019 | New York, New York 10005 |
| 212-465-5000 | 212-750-9000 |
| COST ESTIMATING | LIGHTING CONSULTANT |
| STUART-LYNN COMPANY | RENFOE DESIGN GROUP, INC. |
| 281 Sixth Avenue, 2nd Floor | 36 West 25th Street |
| New York, NY 10014 | Floor 11 |
| 212-209-1180 | New York, NY 10010 |
| | 212-229-9990 |

200 Liberty Street, 24th Floor
New York, New York 10281

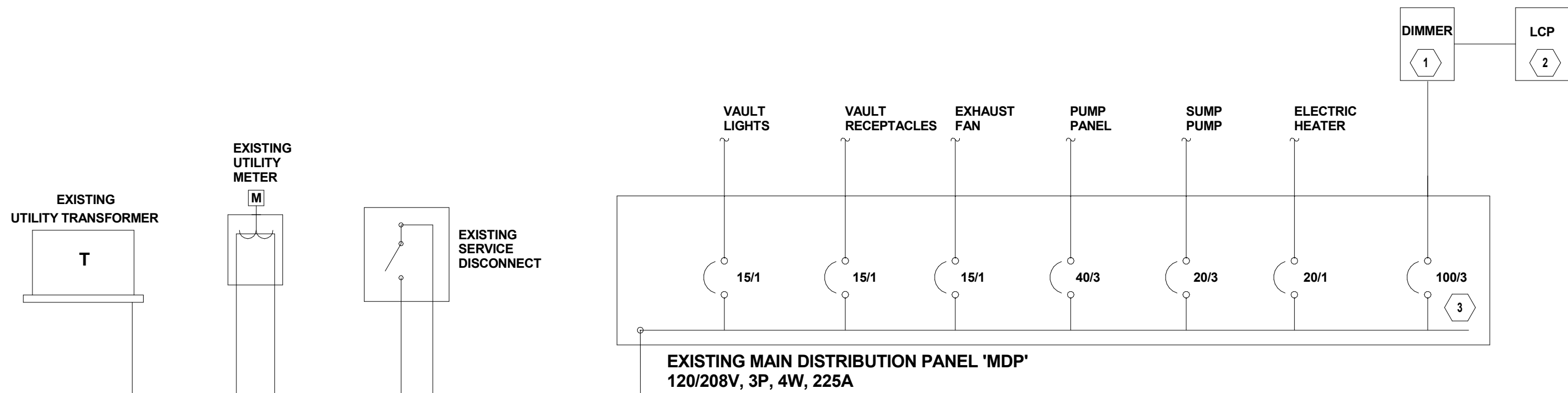
| REVISION | DESCRIPTION | DATE |
|--------------------|-------------|------|
| PROFESSIONAL SEALS | | |

| | |
|----------------------------|-------------------------------|
| DRAWN BY JR | CHECKED BY JY |
| PROJECT NUMBER 18006 | PROJECT ABBREVIATION NYCPM |
| ORIGINAL ISSUE | DATE |
| ISSUED FOR PERMIT& BIDDING | OCTOBER 16, 2019 |

SHEET NUMBER



C:\Users\jimmy\Documents\WEP_NYPoliceMem_v19_jimmy.rvt
10/16/2019 8:15:30 AM



01 EXISTING ONE-LINE DIAGRAM

SCALE: NONE

| PANEL | MDP | 208/120V |
|---------------|------|-----------|
| | | 225A MLO |
| EXISTING LOAD | KVA | AMPS |
| | 25.2 | 70.0 |
| | -6.8 | -19.0 |
| | 2.6 | 7.2 |
| TOTAL LOAD | | 21.0 58.2 |

PANEL: DIMMER

LOCATION: East Vault

MAIN BUS: 100A

MCB: N/A

VOLTAGE: 208/120

AIC: 10,000A

FED FROM: MDP

WIRES: 4W + G

ENCLOSURE: NEMA 1

BUS TYPE: Copper

MOUNTING: Surface

PANEL LUGS: Main Lugs Only

NEUTRAL BUS: Yes

GROUND BUS: Yes

ISOLATED GROUND BUS: No

200% NEUTRAL: No

FEED THROUGH LUGS: No

CKT NO.

DESCRIPTION

TOTAL LOAD (VA)

CIRCUIT BREAKER

AMPS

POLES

PHASE

CIRCUIT BREAKER

AMPS

POLES

TOTAL LOAD (VA)

DESCRIPTION

CKT NO.

1

DED PLAQUE R06 Z-08

24

20

1

A

20

1

180

FLAG POLE R02, R12 Z-05

2

3

NORTH WALL R09 - Z-01

50

20

1

B

20

1

85

* POOL LIGHTING R11 Z-06

4

5

RAMP LTG R03 Z-09

9

20

1

C

20

1

5

* POOL LIGHTING R01 Z-07

6

7

STAIR HANDRAIL R10 - Z-02

12

20

1

A

20

1

720

MEMORIAL WALL R04-A Z-03

8

9

* FLUME LTG R05 Z-10

225

20

1

B

20

1

720

MEMORIAL WALL R04 Z-04

10

11

* ROOKIE FNTN R08 Z-11

20

20

1

C

20

1

24

* ROOKIE FNTN R07 Z-12

12

13

SPARE

-

20

1

A

20

1

-

SPARE

14

15

SPARE

-

20

1

B

20

1

-

SPARE

16

17

SPARE

-

20

1

C

20

1

-

SPARE

18

19

SPARE

-

20

1

A

20

1

-

SPARE

20

21

SPARE

-

20

1

B

20

1

-

SPARE

22

23

SPARE

-

20

1

C

20

1

-

SPARE

24

25

SPARE

-

20

1

A

20

1

-

SPARE

26

27

SPARE

-

20

1

B

20

1

-

SPARE

28

29

SPARE

-

20

1

C

20

1

-

SPARE

30

NOTES:

* PROVIDE GFCI BREAKER

NOTES:

* PROVIDE GFCI BREAKER

| 'DIMMER' LOAD SUMMARY | | | | | |
|----------------------------|-------------------------|-------|------|------------|--------------|
| | LTS | RCPTS | MISC | TOTAL (VA) | TOTAL (AMPS) |
| TOTAL CONNECTED LOAD | 2.1 | 0.0 | 0.0 | 2.1 | 5.8 |
| DEMAND FACTOR | SEE DEMAND FACTOR TABLE | | | | |
| TOTAL DEMAND LOAD | 2.1 | 0.0 | 0.0 | 2.1 | 5.8 |
| CONTINUOUS (DESIGN) FACTOR | 1.25 | 1.00 | 1.00 | | |
| TOTAL DESIGN LOAD | 2.6 | 0.0 | 0.0 | 2.6 | 7.2 |

GENERAL NOTES

- REFER TO E01 FOR LEGENDS, NOTES AND ABBREVIATIONS.
- ALL EQUIPMENT IS EXISTING TO REMAIN UNLESS NOTED OTHERWISE.

LEGEND NOTES

- REPLACE EXISTING DIMMER PANEL WITH NEW BRANCH PANEL TO SERVE ALL NEW LIGHTING. ALL LIGHTING CIRCUITS SHALL BE RUN THROUGH NEW LIGHTING CONTROL PANEL. REUSE ALL EXISTING RACEWAYS AND PATHWAYS FROM 'MDP' TO DIMMER PANEL AND FROM DIMMER PANEL TO LIGHTING CIRCUITS WHERE POSSIBLE. PROVIDE NEW WIRING FOR ALL NEW CIRCUITS.
- PROVIDE NEW LIGHTING CONTROL PANEL WITH DIMMING CAPABILITIES TYPE ARPINTENC32 NLT 245PR-INVOLT HLK SM LSA APS OL ALSO PROVIDE PHOTOCCELL AND TIMELOCK CAPABILITY AND DEVICES AND PROVIDE NECY-INVOLT-BAC-ENC. PROVIDE ELV TO 0-10V COMPATIBILITY MODULES AS NEEDED FOR INTERFACE. REFER TO LIGHTING DRAWINGS FOR LIGHTING CONTROLS INTENT AND OPERATIONS FOR EACH LIGHTING ZONE.
- EXISTING BREAKER AND FEEDER TO REMAIN AS IS AND SERVE NEW DIMMER PANEL.

Page Southerland Page, Inc.
1530 15th Street
Denver, CO 80202
page@psk.com

TEL: 303.595.0491
FAX: 303.595.0282

ARCHITECTURE / ENGINEERING / INTERIORS / PLANNING / CONSULTING
Austin / Dallas / Denver / Dubai / Houston / Mexico City /
San Francisco / Washington DC / International Affiliate Offices

ELECTRICAL ENGINEER
WSP USA
One Penn Plaza, 2nd Floor
250 W 34th Street
New York, New York 10119
212-465-5000

STRUCTURAL ENGINEER
LERA
40 Wall Street
Floor 23
New York, New York 10005
212-750-9000

COST ESTIMATING
STUART-LYNN COMPANY
281 Sixth Avenue, 2nd Floor
New York, NY 10014
212-209-1180

LIGHTING CONSULTANT
RENPRO DESIGN GROUP, INC.
36 West 25th Street
Floor 11
New York, NY 10010
212-229-9990

BATTERY PARK CITY AUTHORITY

NEW YORK CITY POLICE MEMORIAL EXPANSION

200 Liberty Street, 24th Floor
New York, New York 10281

REVISION HISTORY

REVISION DESCRIPTION DATE

PROFESSIONAL SEALS

ELECTRICAL ONE-LINE & SCHEDULES

DRAWN BY GR CHECKED BY JY
PROJECT NUMBER 818006 PROJECT ABBREVIATION NYCPM
ORIGINAL ISSUE DATE OCTOBER 16, 2019
ISSUED FOR PERMIT & BIDDING

E.200

SHEET NUMBER



Page Southerland Page, Inc.
1530 15th Street
Denver, CO 80202
page@pslink.com
TEL: 303.595.0491
FAX: 303.595.0282
ARCHITECTURE / ENGINEERING / INTERIORS PLANNING / CONSULTING
Austin / Dallas / Denver / Dubai / Houston / Mexico City /
San Francisco / Washington DC / International Affiliate Offices

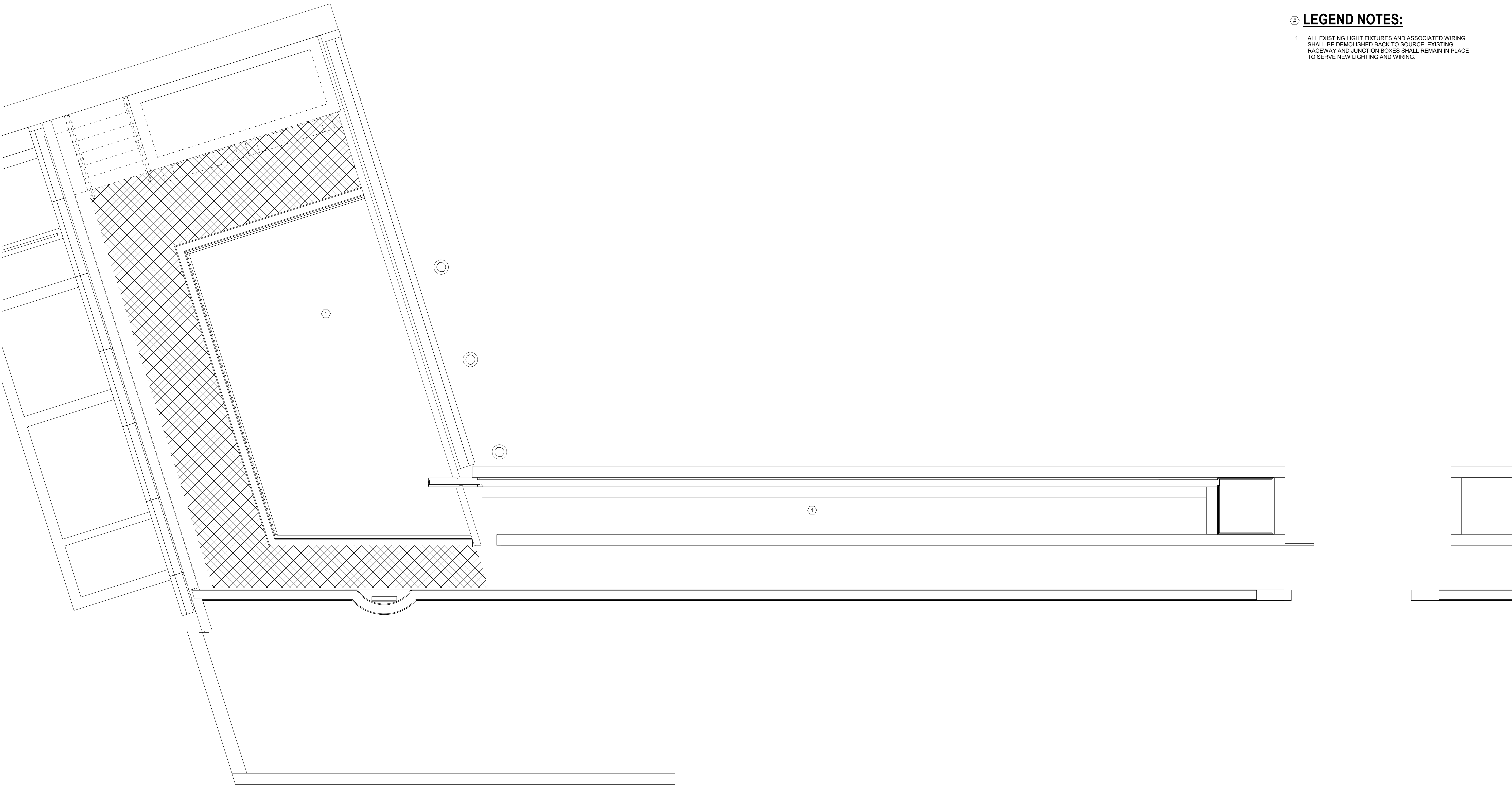
| | |
|---|--|
| ELECTRICAL ENGINEER WSP USA One Penn Plaza, 2nd Floor 250 W 34th Street New York, New York 10119 212-465-5000 | STRUCTURAL ENGINEERING LERA 40 Wall Street Floor 23 New York, New York 10005 212-750-9000 |
| COST ESTIMATING STUART-LYNN COMPANY 281 Sixth Avenue, 2nd Floor New York, NY 10014 212-209-1180 | LIGHTING CONSULTANT RENFRO DESIGN GROUP, INC. 36 West 25th Street Floor 11 New York, NY 10010 212-229-9990 |

GENERAL NOTES:

A. REFER TO SHEET E.000 FOR LEGENDS, NOTES AND ABBREVIATIONS.

LEGEND NOTES:

1 ALL EXISTING LIGHT FIXTURES AND ASSOCIATED WIRING SHALL BE DEMOLISHED BACK TO SOURCE. EXISTING RACEWAY AND JUNCTION BOXES SHALL REMAIN IN PLACE TO SERVE NEW LIGHTING AND WIRING.



1 ELECTRICAL - DEMOLITION PLAN
1/4" = 1'-0"



BATTERY PARK CITY AUTHORITY
NEW YORK CITY POLICE MEMORIAL EXPANSION
200 Liberty Street, 24th Floor
New York, New York 10281

REVISION HISTORY

| REVISION | DESCRIPTION | DATE |
|----------|-------------|------|
|----------|-------------|------|

ELECTRICAL SITE DEMOLITION PLAN

| | |
|---|-------------------------------|
| DRAWN BY GR | CHECKED BY JY |
| PROJECT NUMBER 818006 | PROJECT ABBREVIATION NYCPM |
| ORIGINAL ISSUE ISSUED FOR PERMIT & BIDDING | DATE OCTOBER 16, 2019 |

ED.100

SHEET NUMBER