

PROJECT

SOUTH BATTERY PARK
RESILIENCY DESIGN
SERVICES

CLIENT

HUGH L. CAREY
BATTERY PARK CITY
AUTHORITY

CONSULTANT



AECOM DESIGN AND ENGINEERING
605 3rd Ave, 2nd Floor, New York, NY 10016
212.973.2900 tel www.aecom.com

SUB-CONSULTANT

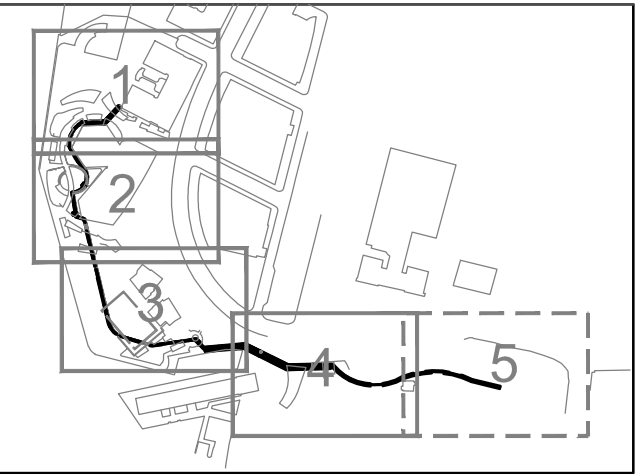
MAGNUSON KLEMENCIC ASSOCIATES
1301 Fifth Avenue, Suite 3200
Seattle, WA 98101-2699
206.292.1200 tel 206.292.1201 fax
www.mka.com

SITE WORKS

150 West 28th St.
Suite 605
New York, NY 10001
212.255.8350 siteworkscm.com



KEY PLAN



REGISTRATION

PRELIMINARY
NOT FOR CONSTRUCTION

ISSUE/REVISION

I/R	DATE	DESCRIPTION

PROJECT/TERM CONTRACT NUMBER

Contract No. 18-2586

SHEET TITLE

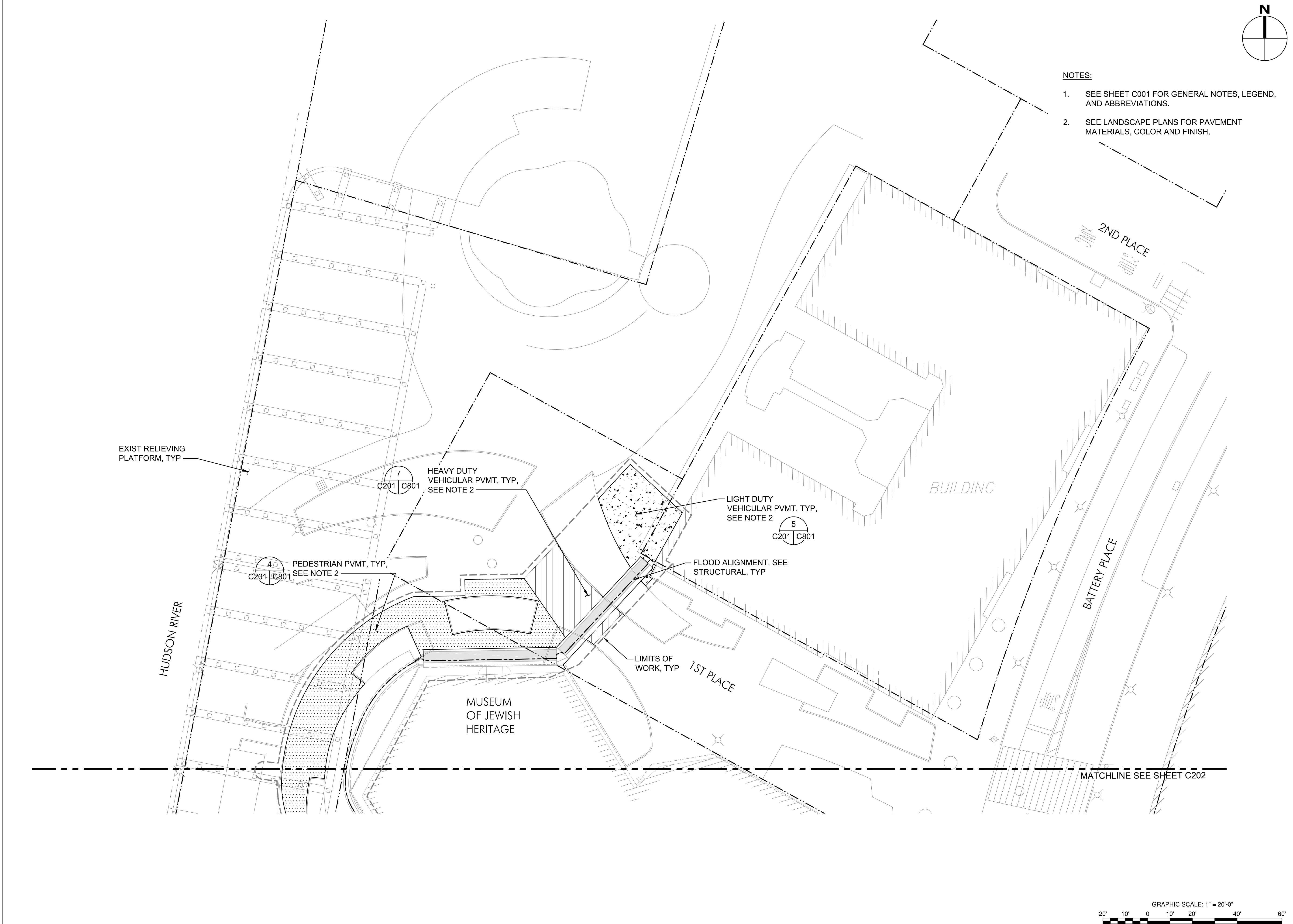
SITE & PAVING KEY PLAN

SHEET NUMBER

C200

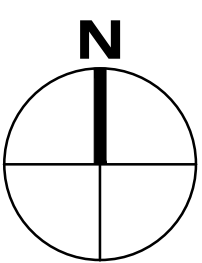
ANSI D 22" x 34"

Last saved by: BED/2019-08-24, Last Printed: 2018-08-24
Filename: C:\WORK\KINGRECON_LDS\10_NACLA\08091002046725BPC201R00.DWG



NOTES:

- SEE SHEET C001 FOR GENERAL NOTES, LEGEND, AND ABBREVIATIONS.
- SEE LANDSCAPE PLANS FOR PAVEMENT MATERIALS, COLOR AND FINISH.



2ND PLACE

BUILDING

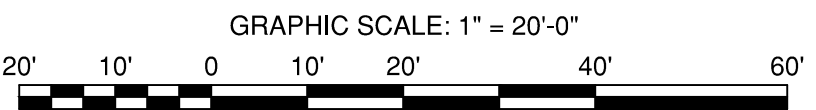
BATTERY PLACE

1ST PLACE

HUDSON RIVER

MUSEUM OF JEWISH HERITAGE

MATCHLINE SEE SHEET C202



30% DRAFT DESIGN DOCUMENTS



PROJECT

SOUTH BATTERY PARK
RESILIENCY DESIGN
SERVICES

CLIENT

HUGH L. CAREY
BATTERY PARK CITY
AUTHORITY

CONSULTANT



AECOM DESIGN AND ENGINEERING
605 3rd Ave, 2nd Floor, New York, NY 10016
212.973.2900 tel www.aecom.com

SUB-CONSULTANT

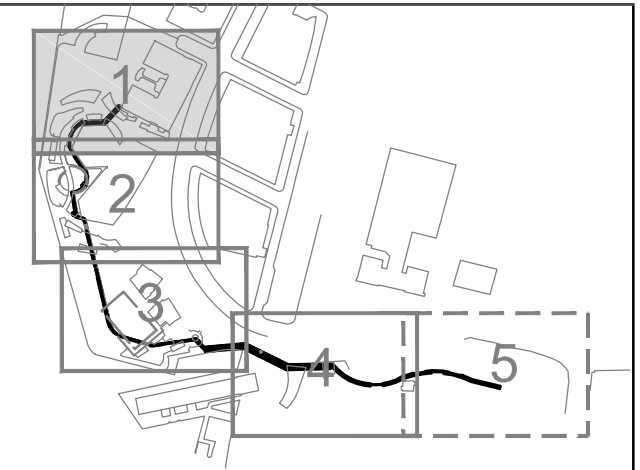
MAGNUSSON KLEMENCIC ASSOCIATES
1301 Fifth Avenue, Suite 3200
Seattle, WA 98101-2699
206.292.1200 tel 206.292.1201 fax
www.mka.com

SITE WORKS

150 West 28th St.
Suite 605
New York, NY 10001
212.255.8350 siteworkscm.com



KEY PLAN



REGISTRATION

PRELIMINARY
NOT FOR CONSTRUCTION

ISSUE/REVISION

I/R	DATE	DESCRIPTION

PROJECT/TERM CONTRACT NUMBER

Contract No. 18-2586

SHEET TITLE

SITE & PAVING PLAN 1

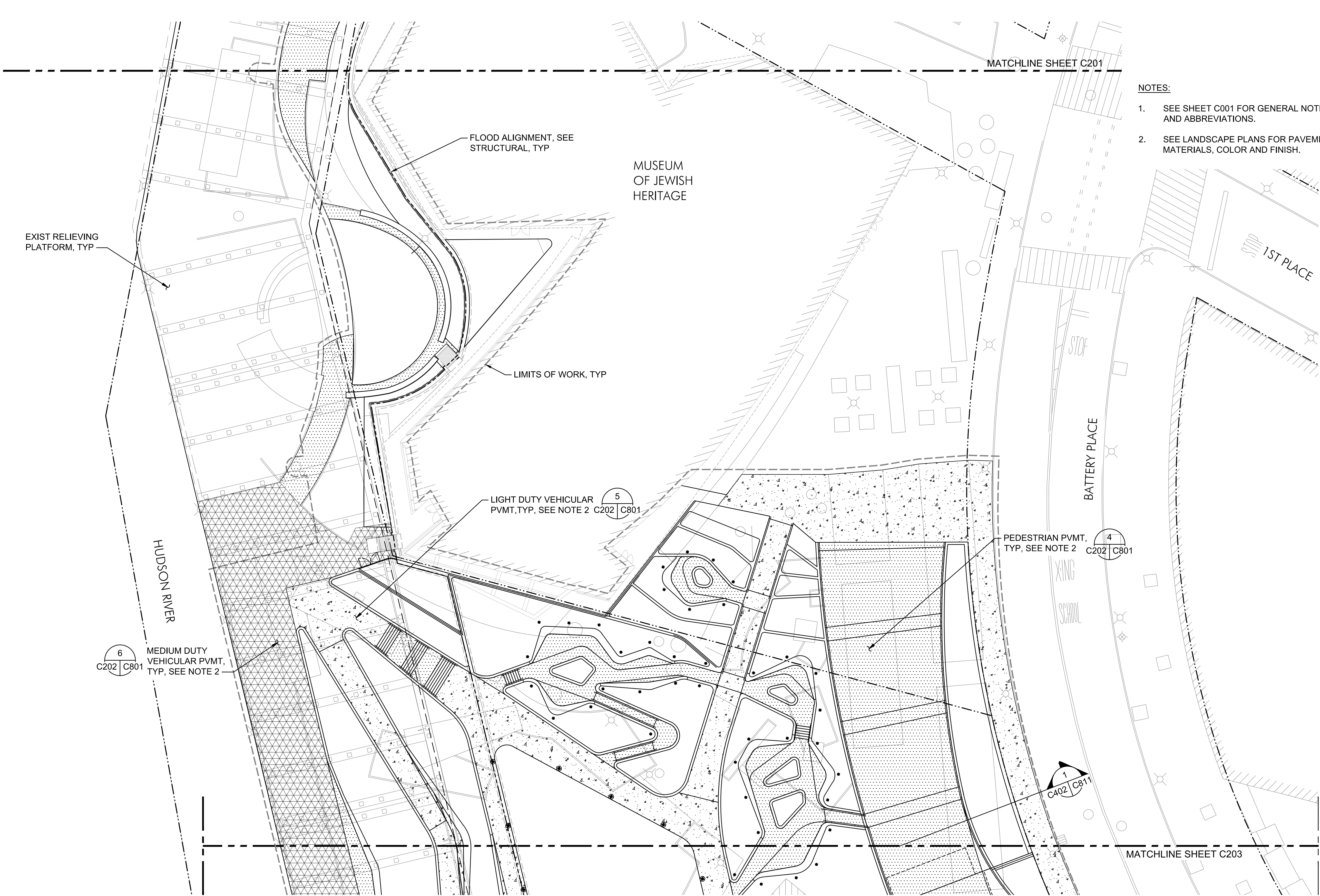
SHEET NUMBER

C201

ANSI D 22" x 34"

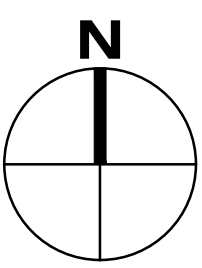
Last saved by: BED/2019-08-24
Filename: C:\WORKING\RECON\0510_NACLA\0509100246725BPC222R00.DWG
Last Printed: 2019-08-24

Printed on 100% Post-Consumer Recycled Content Paper



NOTES:

- SEE SHEET C001 FOR GENERAL NOTES, LEGEND, AND ABBREVIATIONS.
- SEE LANDSCAPE PLANS FOR PAVEMENT MATERIALS, COLOR AND FINISH.



AECOM

PROJECT

**SOUTH BATTERY PARK
RESILIENCY DESIGN
SERVICES**

CLIENT

**HUGH L. CAREY
BATTERY PARK CITY
AUTHORITY**

CONSULTANT

AECOM

AECOM DESIGN AND ENGINEERING
605 3rd Ave, 2nd Floor, New York, NY 10016
212.973.2900 tel www.aecom.com

SUB-CONSULTANT

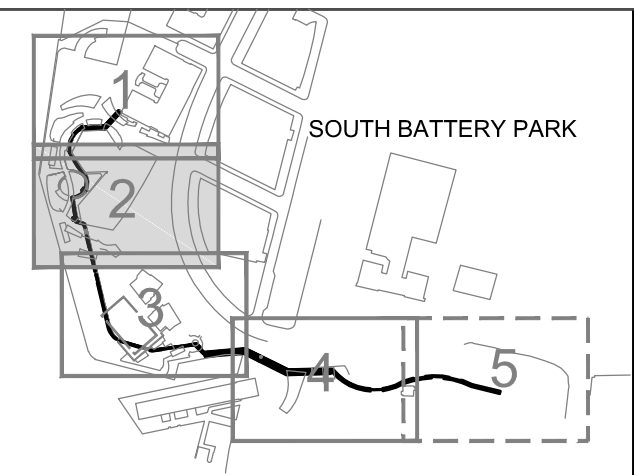
MAGNUSSON KLEMENCIC ASSOCIATES
1301 Fifth Avenue, Suite 3200
Seattle, WA 98101-2699
206.292.1200 tel 206.292.1201 fax
www.mka.com

SITE WORKS

150 West 28th St.
Suite 605
New York, NY 10001
212.255.8350 siteworkscm.com



KEY PLAN



REGISTRATION

**PRELIMINARY
NOT FOR CONSTRUCTION**

ISSUE/REVISION

I/R	DATE	DESCRIPTION

PROJECT/TERM CONTRACT NUMBER

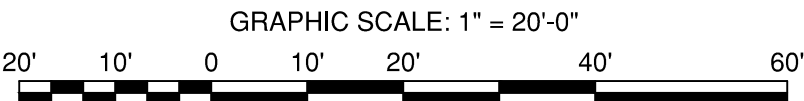
Contract No. 18-2586

SHEET TITLE

SITE & PAVING PLAN 2

SHEET NUMBER

C202

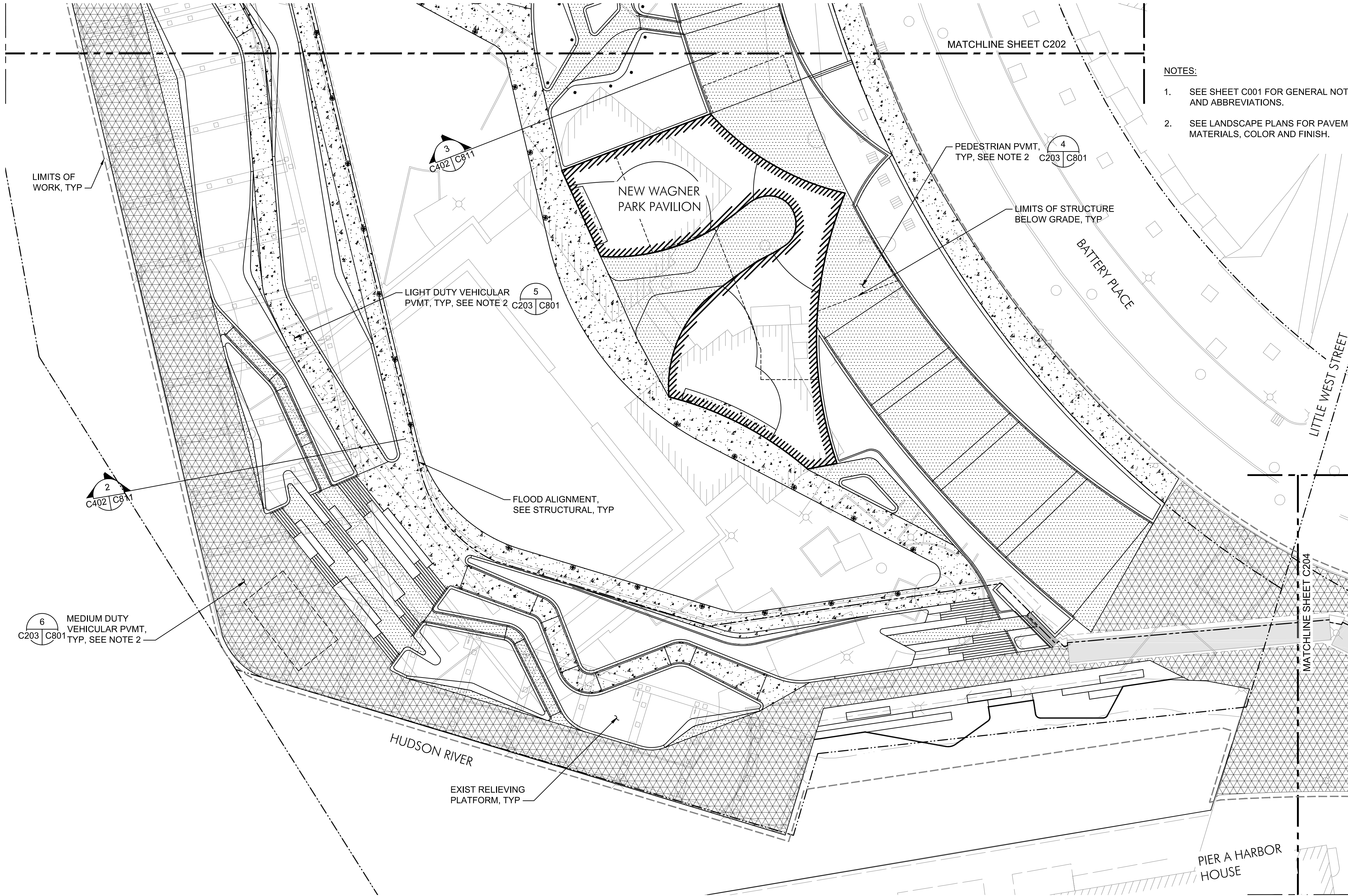


30% DRAFT DESIGN DOCUMENTS

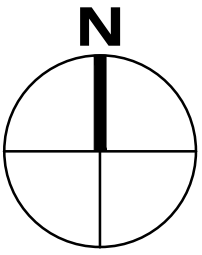
ANSI D 22" x 34"

Last saved by: BLC1(2018-10-26) - Last Plotter: 2018-10-26
Filename: C:\WORKING\AECOM\DS10\WCLA1809100294672\BPPC203R00.DWG

Printed on 100% Post-Consumer Recycled Content Paper



- NOTES:
- SEE SHEET C001 FOR GENERAL NOTES, LEGEND, AND ABBREVIATIONS.
 - SEE LANDSCAPE PLANS FOR PAVEMENT MATERIALS, COLOR AND FINISH.



PROJECT

SOUTH BATTERY PARK
RESILIENCY DESIGN
SERVICES

CLIENT

HUGH L. CAREY
BATTERY PARK CITY
AUTHORITY

CONSULTANT

AECOM

AECOM DESIGN AND ENGINEERING
605 3rd Ave, 2nd Floor, New York, NY 10016
212.973.2900 tel www.aecom.com

SUB-CONSULTANT

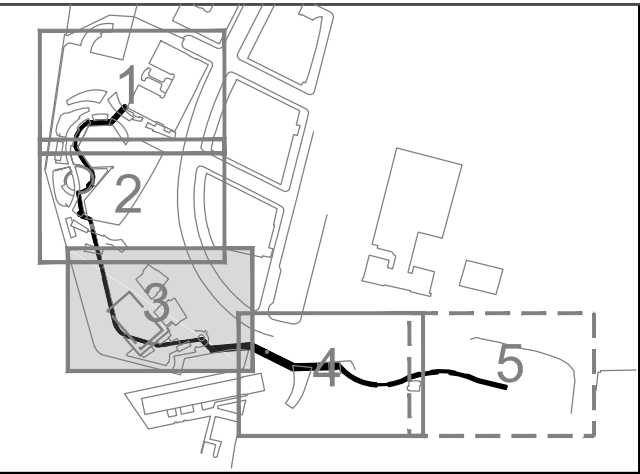
MAGNUSSON KLEMENCIC ASSOCIATES
1301 Fifth Avenue, Suite 3200
Seattle, WA 98101-2699
206.292.1200 tel 206.292.1201 fax
www.mka.com

SITE WORKS

150 West 28th St.
Suite 605
New York, NY 10001
212.255.8350 siteworkscm.com



KEY PLAN



REGISTRATION

PRELIMINARY
NOT FOR CONSTRUCTION

ISSUE/REVISION

I/R	DATE	DESCRIPTION

PROJECT/TERM CONTRACT NUMBER

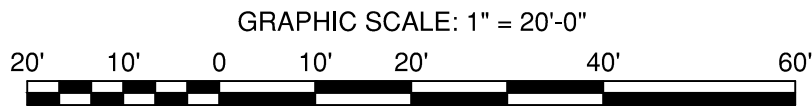
Contract No. 18-2586

SHEET TITLE

SITE & PAVING PLAN 3

SHEET NUMBER

C203

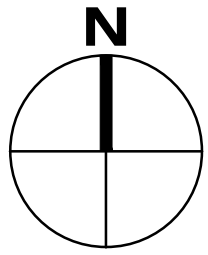
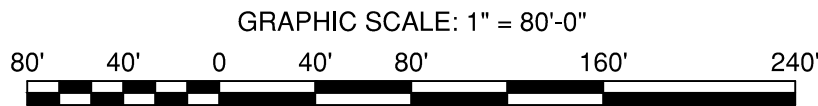
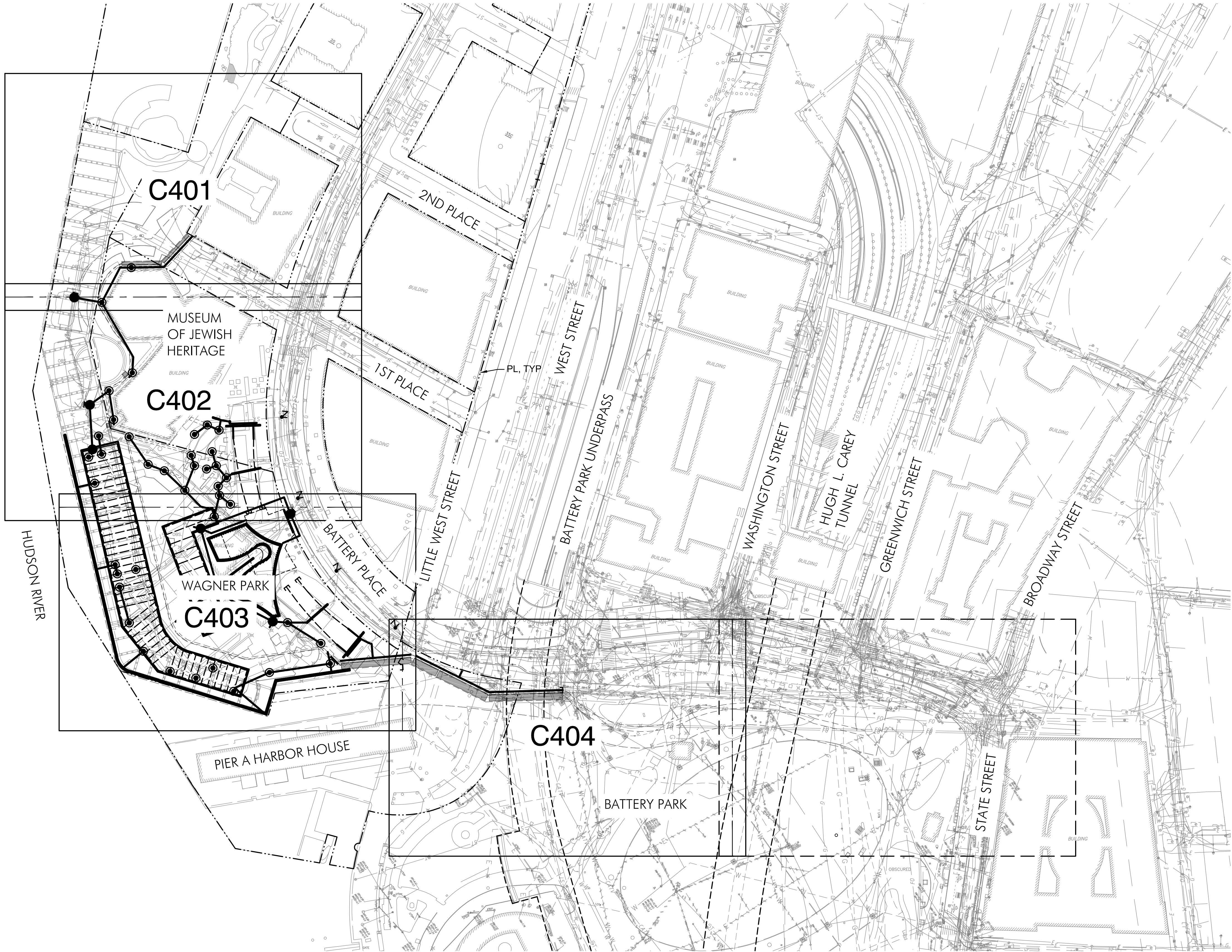


30% DRAFT DESIGN DOCUMENTS

ANSI D 22" x 34"

Last saved by: BGCI (2015-06-23) Last Printed: 2015-06-24
Filename: C:\WORKING\AECOM\05\02\KACLA\05051002\4672\BPCC-400R00.DWG

Printed on % Post-Consumer Recycled Content Paper



PROJECT

SOUTH BATTERY PARK
RESILIENCY DESIGN
SERVICES

CLIENT

HUGH L. CAREY
BATTERY PARK CITY
AUTHORITY

CONSULTANT



AECOM DESIGN AND ENGINEERING
605 3rd Ave, 2nd Floor, New York, NY 10016
212.973.2900 tel www.aecom.com

SUB-CONSULTANT

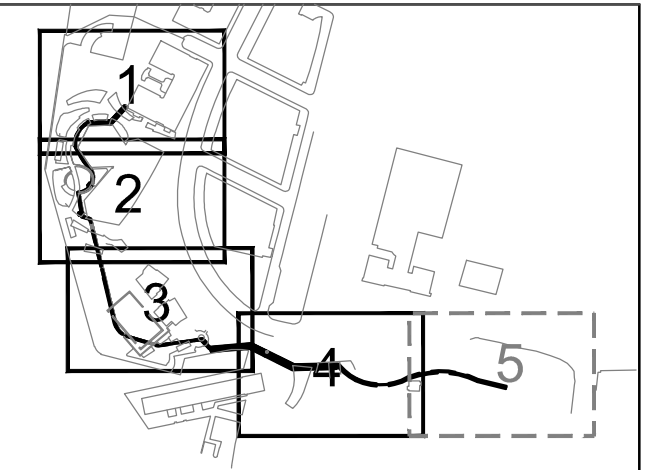
MAGNUSSON KLEMENCIC ASSOCIATES
1301 Fifth Avenue, Suite 3200
Seattle, WA 98101-2699
206.292.1200 tel 206.292.1201 fax
www.mka.com

SITE WORKS

150 West 28th St.
Suite 605
New York, NY 10001
212.255.8350 siteworkscm.com



KEY PLAN



REGISTRATION

PRELIMINARY
NOT FOR CONSTRUCTION

ISSUE/REVISION

I/R	DATE	DESCRIPTION

PROJECT/TERM CONTRACT NUMBER

Contract No. 18-2586

SHEET TITLE

STORM DRAINAGE
KEY PLAN

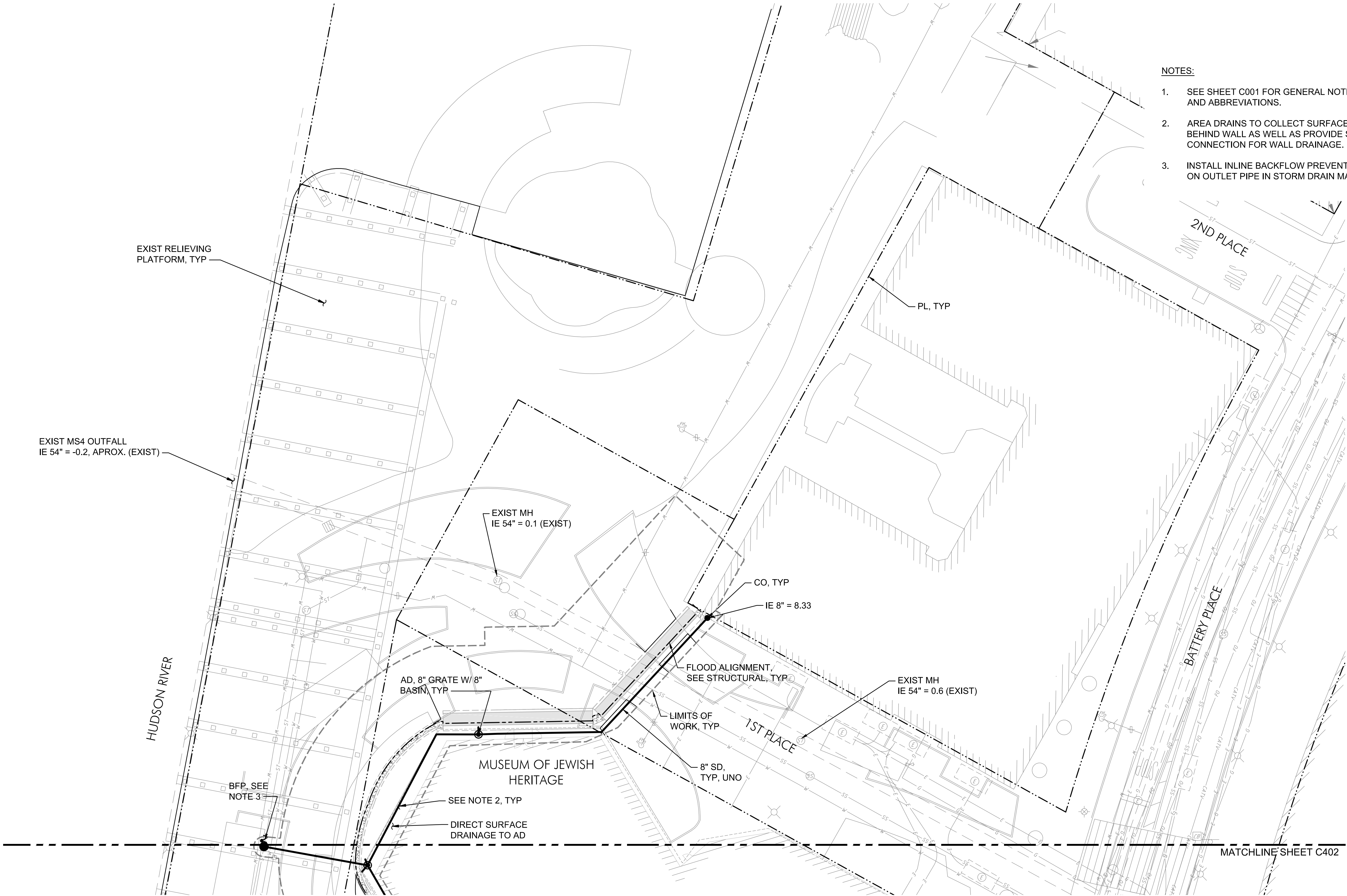
SHEET NUMBER

C400

ANSI D 22" x 34"

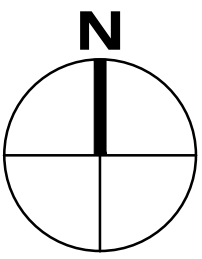
Last saved by: BLC1(2015-10-23) Last Plotter: 2015-10-23
Filename: C:\WORKING\AECOM\0510\KACLA\050910\024672\SBPCC-401R00.DWG

Printed on 100% Post-Consumer Recycled Content Paper



NOTES:

- SEE SHEET C001 FOR GENERAL NOTES, LEGEND, AND ABBREVIATIONS.
- AREA DRAINS TO COLLECT SURFACE DRAINAGE BEHIND WALL AS WELL AS PROVIDE SUBSURFACE CONNECTION FOR WALL DRAINAGE.
- INSTALL INLINE BACKFLOW PREVENTION DEVICE ON OUTLET PIPE IN STORM DRAIN MANHOLE.



PROJECT

**SOUTH BATTERY PARK
RESILIENCY DESIGN
SERVICES**

CLIENT

**HUGH L. CAREY
BATTERY PARK CITY
AUTHORITY**

CONSULTANT

AECOM

AECOM DESIGN AND ENGINEERING
605 3rd Ave, 2nd Floor, New York, NY 10016
212.973.2900 tel www.aecom.com

SUB-CONSULTANT

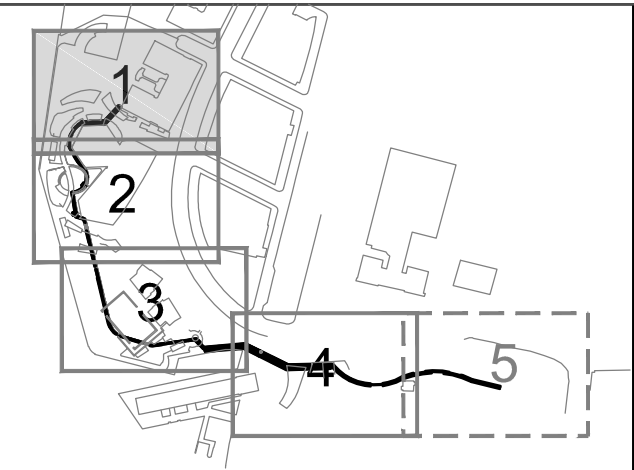
MAGNUSSON KLEMENCIC ASSOCIATES
1301 Fifth Avenue, Suite 3200
Seattle, WA 98101-2699
206.292.1200 tel 206.292.1201 fax
www.mka.com

SITE WORKS

150 West 28th St.
Suite 605
New York, NY 10001
212.255.8350 siteworkscm.com



KEY PLAN



REGISTRATION

**PRELIMINARY
NOT FOR CONSTRUCTION**

ISSUE/REVISION

1/R	DATE	DESCRIPTION

PROJECT/TERM CONTRACT NUMBER

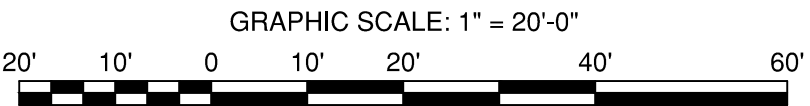
Contract No. 18-2586

SHEET TITLE

STORM DRAINAGE PLAN 1

SHEET NUMBER

C401

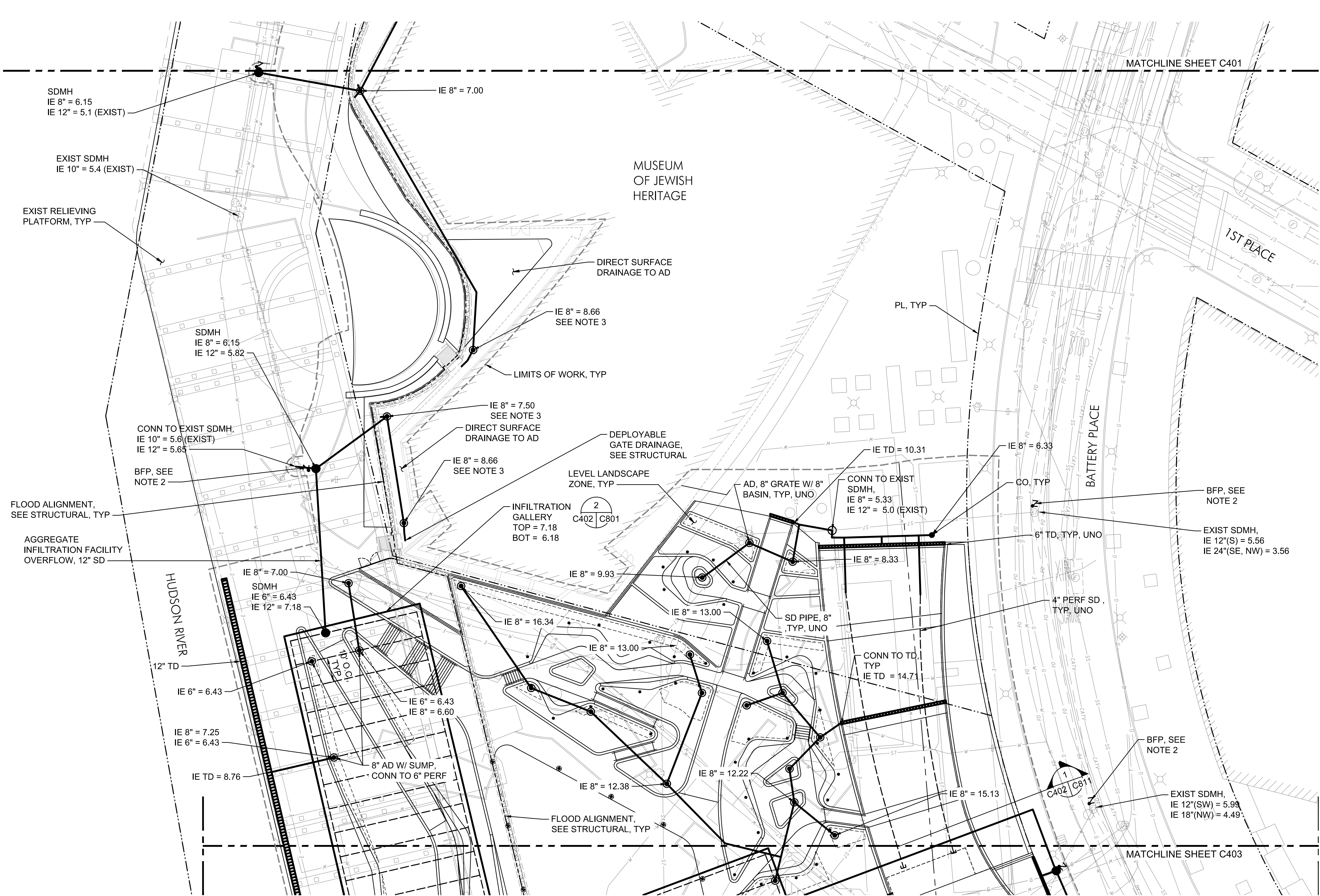


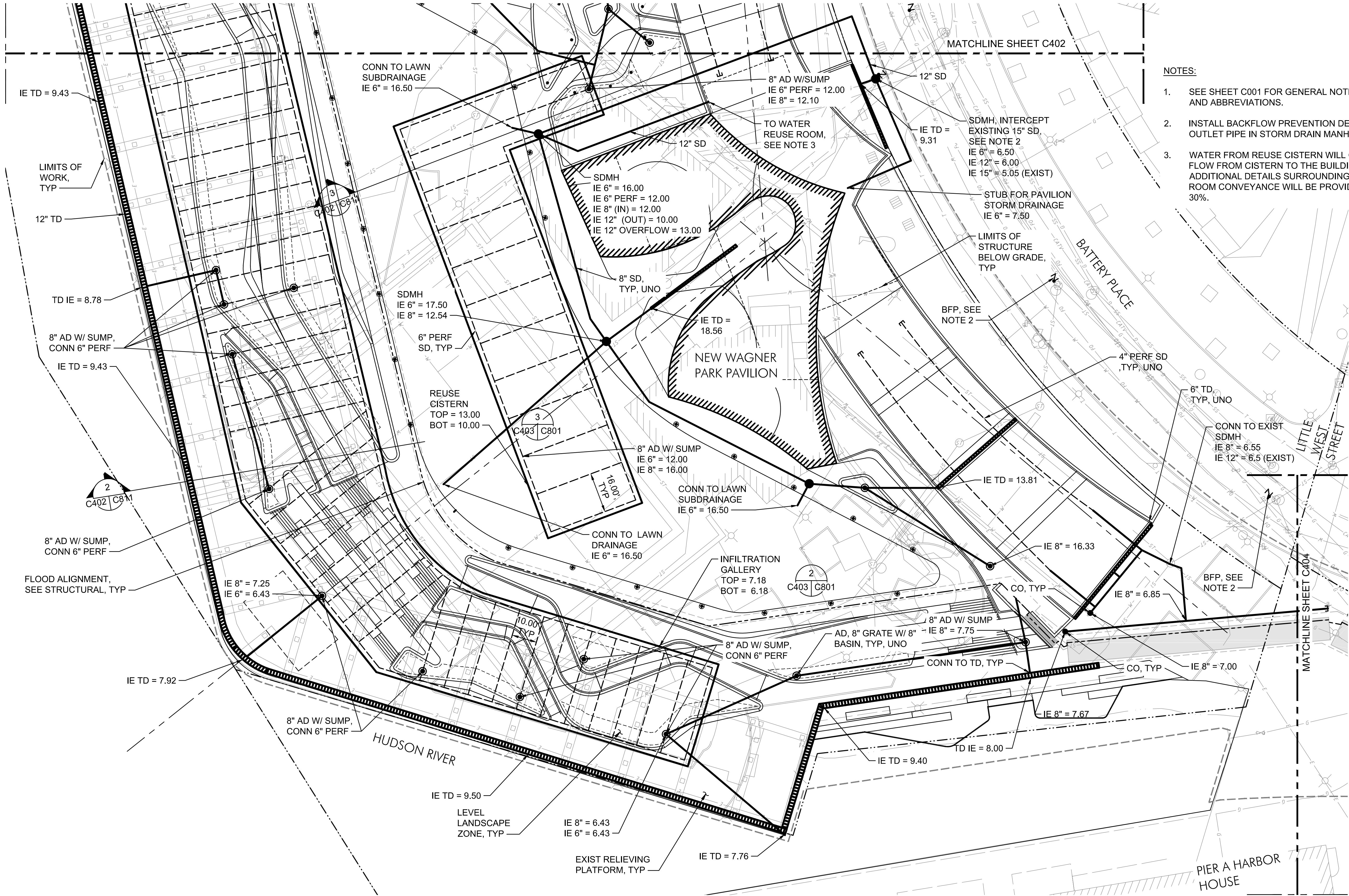
30% DRAFT DESIGN DOCUMENTS

ANSI D 22" x 34"

Last saved by: BE2(2019-08-23) Last Printed: 2019-08-24
Filename: C:\WORKING\AECOM\0510\NACLA\05091002\4672\BPCC-C402R00.DWG

Printed on % Post-Consumer Recycled Content Paper





NOTES:

- SEE SHEET C001 FOR GENERAL NOTES, LEGEND, AND ABBREVIATIONS.
- INSTALL BACKFLOW PREVENTION DEVICE ON OUTLET PIPE IN STORM DRAIN MANHOLE.
- WATER FROM REUSE CISTERN WILL GRAVITY FLOW FROM CISTERN TO THE BUILDING. ADDITIONAL DETAILS SURROUNDING THE REUSE ROOM CONVEYANCE WILL BE PROVIDED POST 30%.

PROJECT

SOUTH BATTERY PARK
RESILIENCY DESIGN
SERVICES

CLIENT

HUGH L. CAREY
BATTERY PARK CITY
AUTHORITY

CONSULTANT

AECOM

AECOM DESIGN AND ENGINEERING
605 3rd Ave, 2nd Floor, New York, NY 10016
212.973.2900 tel www.aecom.com

SUB-CONSULTANT

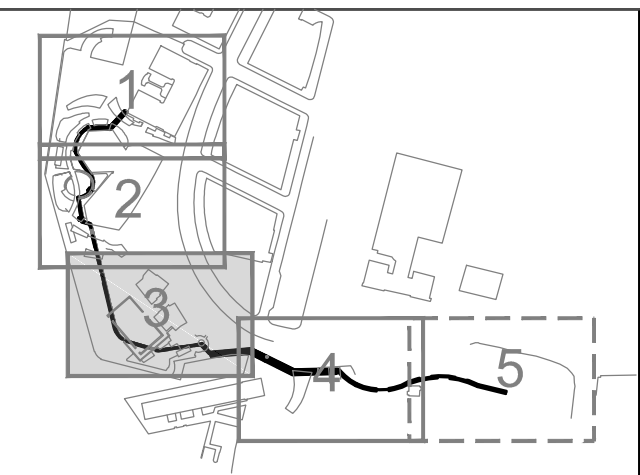
MAGNUSON KLEMENCIC ASSOCIATES
1301 Fifth Avenue, Suite 3200
Seattle, WA 98101-2699
206.292.1200 tel 206.292.1201 fax
www.mka.com

SITE WORKS

150 West 28th St.
Suite 605
New York, NY 10001
212.255.8350 siteworkscm.com



KEY PLAN



REGISTRATION

PRELIMINARY
NOT FOR CONSTRUCTION

ISSUE/REVISION

1/R	DATE	DESCRIPTION

PROJECT/TERM CONTRACT NUMBER

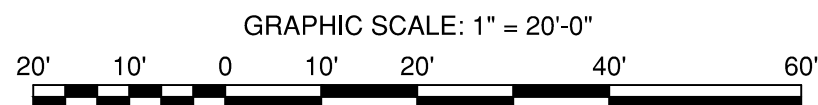
Contract No. 18-2586

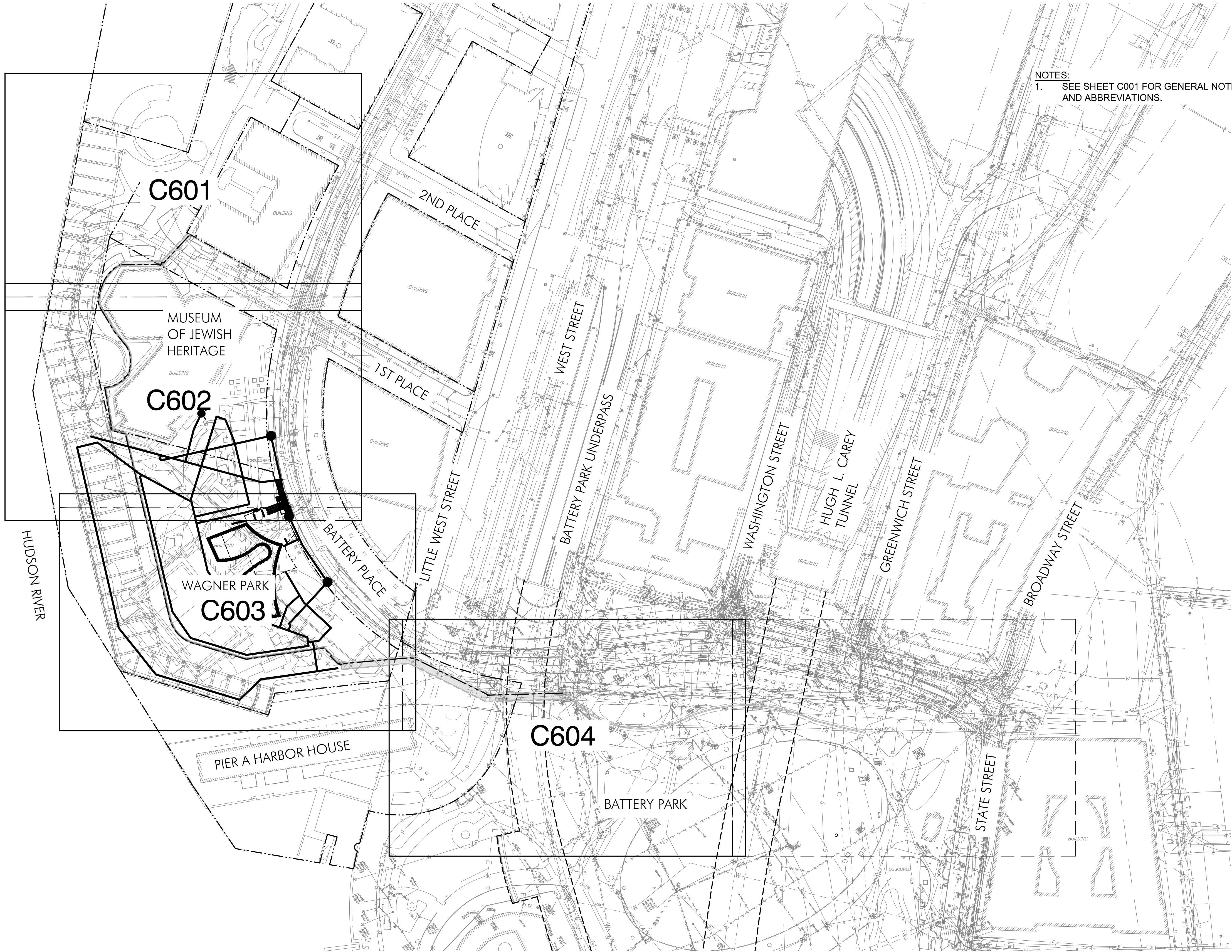
SHEET TITLE

STORM DRAINAGE PLAN 3

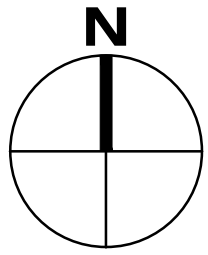
SHEET NUMBER

C403





NOTES:
1. SEE SHEET C001 FOR GENERAL NOTES, LEGEND, AND ABBREVIATIONS.



PROJECT

SOUTH BATTERY PARK
RESILIENCY DESIGN
SERVICES

CLIENT

HUGH L. CAREY
BATTERY PARK CITY
AUTHORITY

CONSULTANT



AECOM DESIGN AND ENGINEERING
605 3rd Ave, 2nd Floor, New York, NY 10016
212.973.2900 tel www.aecom.com

SUB-CONSULTANT

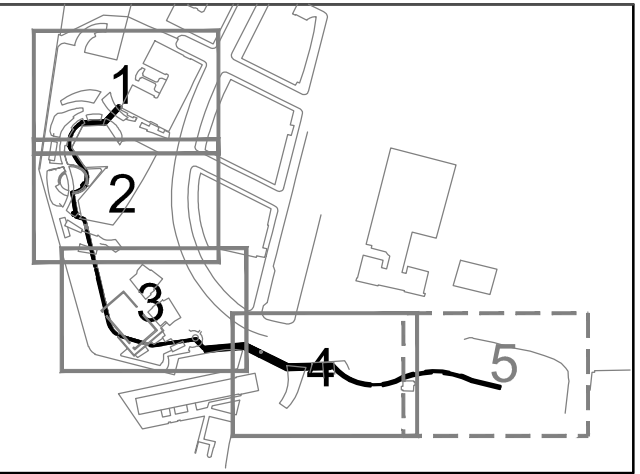
MAGNUSSON KLEMENCIC ASSOCIATES
1301 Fifth Avenue, Suite 3200
Seattle, WA 98101-2699
206.292.1200 tel 206.292.1201 fax
www.mka.com

SITE WORKS



150 West 28th St.
Suite 605
New York, NY 10001
212.255.8350 siteworkscm.com

KEY PLAN



REGISTRATION

PRELIMINARY
NOT FOR CONSTRUCTION

ISSUE/REVISION

I/R	DATE	DESCRIPTION

PROJECT/TERM CONTRACT NUMBER

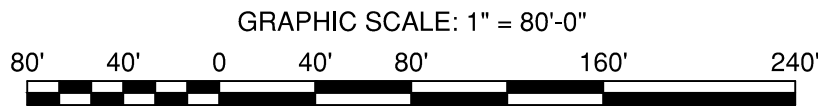
Contract No. 18-2586

SHEET TITLE

WATER AND SEWER KEY PLAN

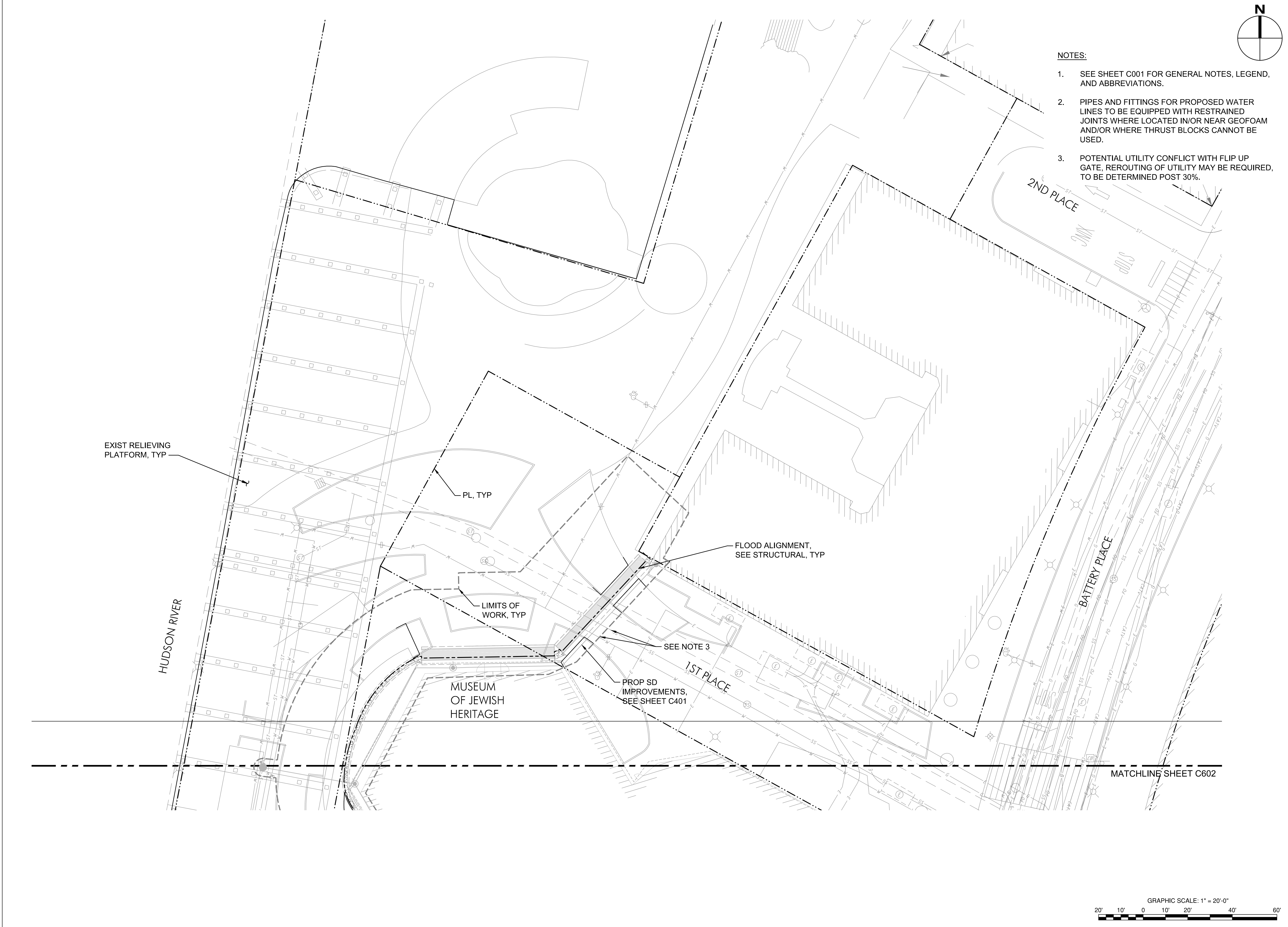
SHEET NUMBER

C600



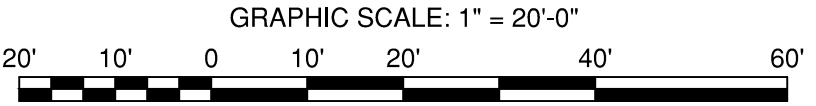
ANSI D 22" x 34"

Last saved by: BED/2019-08-24, Last Printed: 2018-08-24
Filename: C:\WORK\KINGRECON_L0510\KACLA\08091002046725BPC601R00.DWG

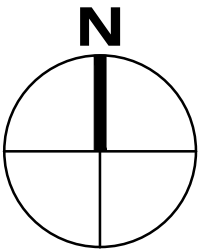


NOTES:

1. SEE SHEET C001 FOR GENERAL NOTES, LEGEND, AND ABBREVIATIONS.
2. PIPES AND FITTINGS FOR PROPOSED WATER LINES TO BE EQUIPPED WITH RESTRAINED JOINTS WHERE LOCATED IN/OR NEAR GEOFOAM AND/OR WHERE THRUST BLOCKS CANNOT BE USED.
3. POTENTIAL UTILITY CONFLICT WITH FLIP UP GATE, REROUTING OF UTILITY MAY BE REQUIRED, TO BE DETERMINED POST 30%.



30% DRAFT DESIGN DOCUMENTS



PROJECT

SOUTH BATTERY PARK
RESILIENCY DESIGN
SERVICES

CLIENT

HUGH L. CAREY
BATTERY PARK CITY
AUTHORITY

CONSULTANT



AECOM DESIGN AND ENGINEERING
605 3rd Ave, 2nd Floor, New York, NY 10016
212.973.2900 tel www.aecom.com

SUB-CONSULTANT

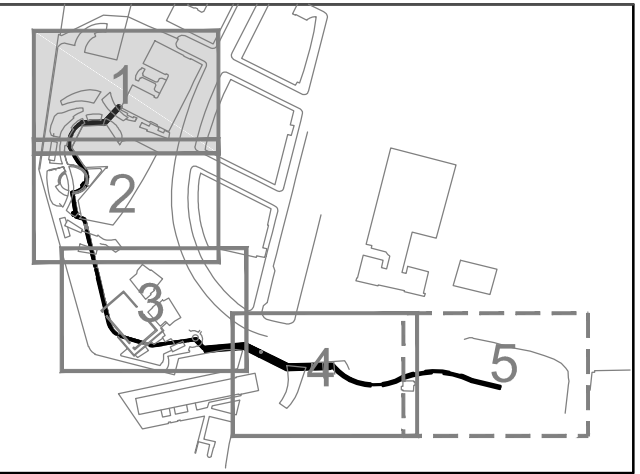
MAGNUSSON KLEMENCIC ASSOCIATES
1301 Fifth Avenue, Suite 3200
Seattle, WA 98101-2699
206.292.1200 tel 206.292.1201 fax
www.mka.com

SITE WORKS

150 West 28th St.
Suite 605
New York, NY 10001
212.255.8350 siteworkscm.com



KEY PLAN



REGISTRATION

PRELIMINARY
NOT FOR CONSTRUCTION

ISSUE/REVISION

1/R	DATE	DESCRIPTION

PROJECT/TERM CONTRACT NUMBER

Contract No. 18-2586

SHEET TITLE

WATER AND SEWER PLAN

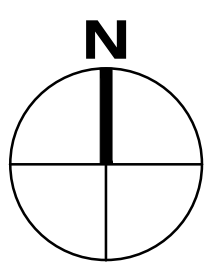
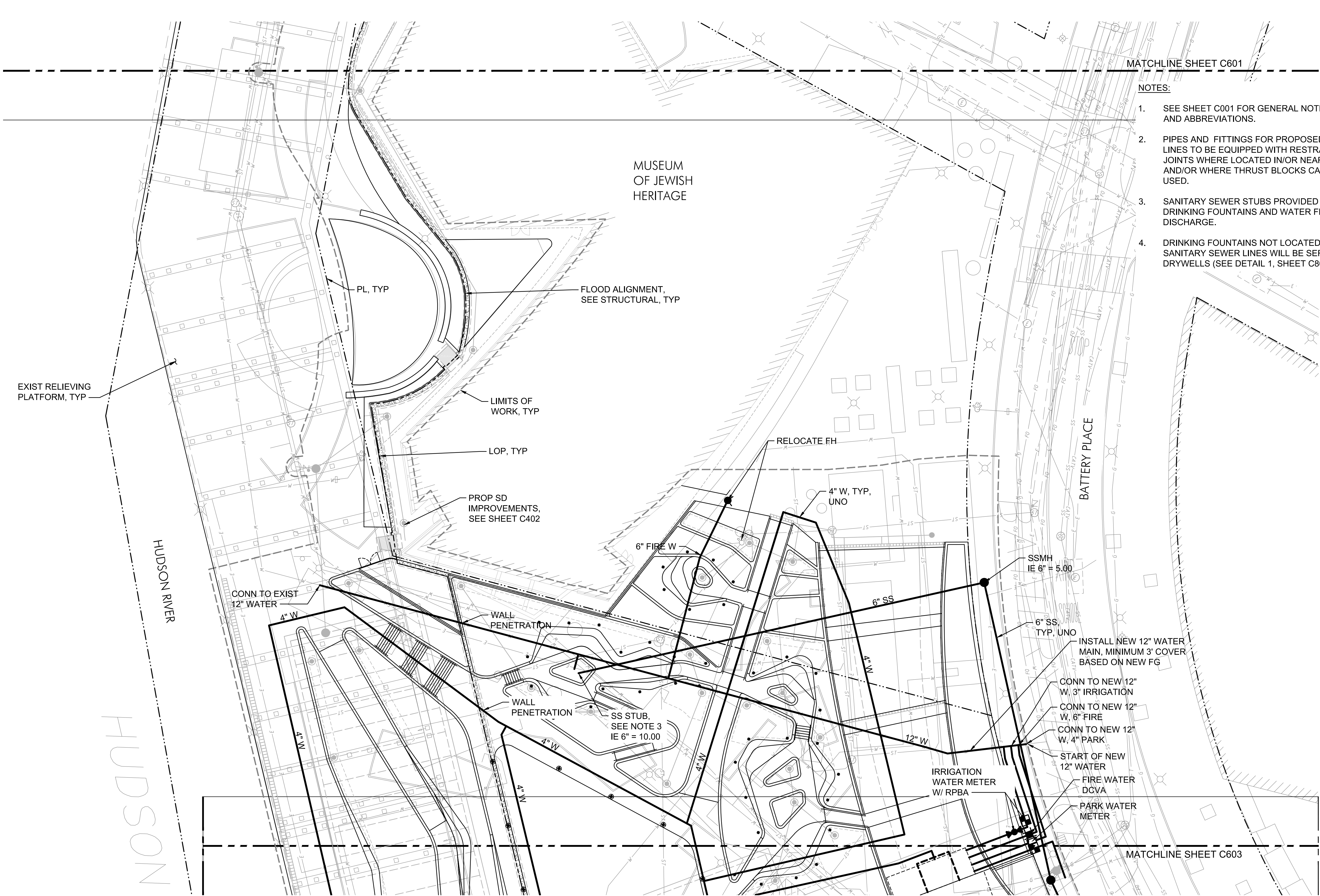
SHEET NUMBER

C601

ANSI D 22" x 34"

Last saved by: BED/2019-08-24
Filename: C:\WORKING\AECOM\0510\NACLA\050910024672\BPPCC602R00.DWG
Last Printed: 2019-08-24

Printed on 100% Post-Consumer Recycled Content Paper



MATCHLINE SHEET C601

NOTES:

1. SEE SHEET C001 FOR GENERAL NOTES, LEGEND, AND ABBREVIATIONS.
2. PIPES AND FITTINGS FOR PROPOSED WATER LINES TO BE EQUIPPED WITH RESTRAINED JOINTS WHERE LOCATED IN/OR NEAR GEOFOAM AND/OR WHERE THRUST BLOCKS CANNOT BE USED.
3. SANITARY SEWER STUBS PROVIDED FOR FUTURE DRINKING FOUNTAINS AND WATER FEATURE DISCHARGE.
4. DRINKING FOUNTAINS NOT LOCATED NEAR SANITARY SEWER LINES WILL BE SERVED BY DRYWELLS (SEE DETAIL 1, SHEET C801).



PROJECT

SOUTH BATTERY PARK
RESILIENCY DESIGN
SERVICES

CLIENT

HUGH L. CAREY
BATTERY PARK CITY
AUTHORITY

CONSULTANT



AECOM DESIGN AND ENGINEERING
605 3rd Ave, 2nd Floor, New York, NY 10016
212.973.2900 tel www.aecom.com

SUB-CONSULTANT

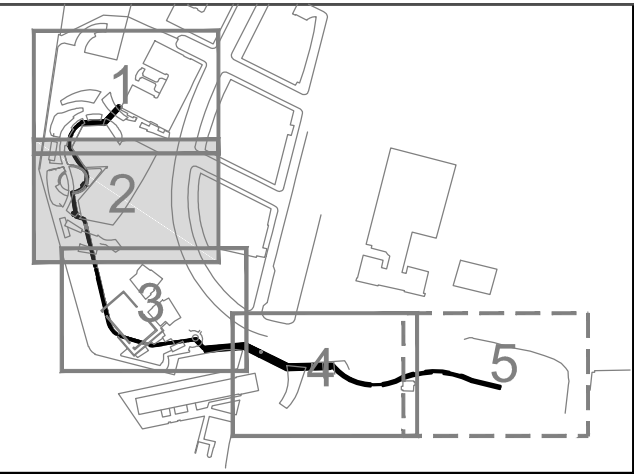
MAGNUSON KLEMENCIC ASSOCIATES
1301 Fifth Avenue, Suite 3200
Seattle, WA 98101-2699
206.292.1200 tel 206.292.1201 fax
www.mka.com

SITE WORKS

150 West 28th St.
Suite 605
New York, NY 10001
212.255.8350 siteworkscm.com



KEY PLAN



REGISTRATION

PRELIMINARY
NOT FOR CONSTRUCTION

ISSUE/REVISION

IR	DATE	DESCRIPTION

PROJECT/TERM CONTRACT NUMBER

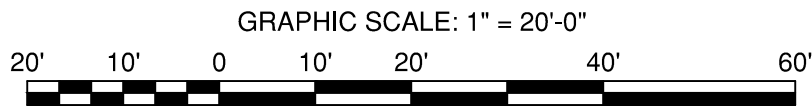
Contract No. 18-2586

SHEET TITLE

WATER AND SEWER PLAN

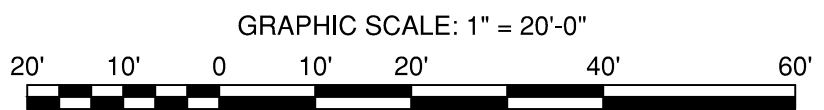
SHEET NUMBER

C602

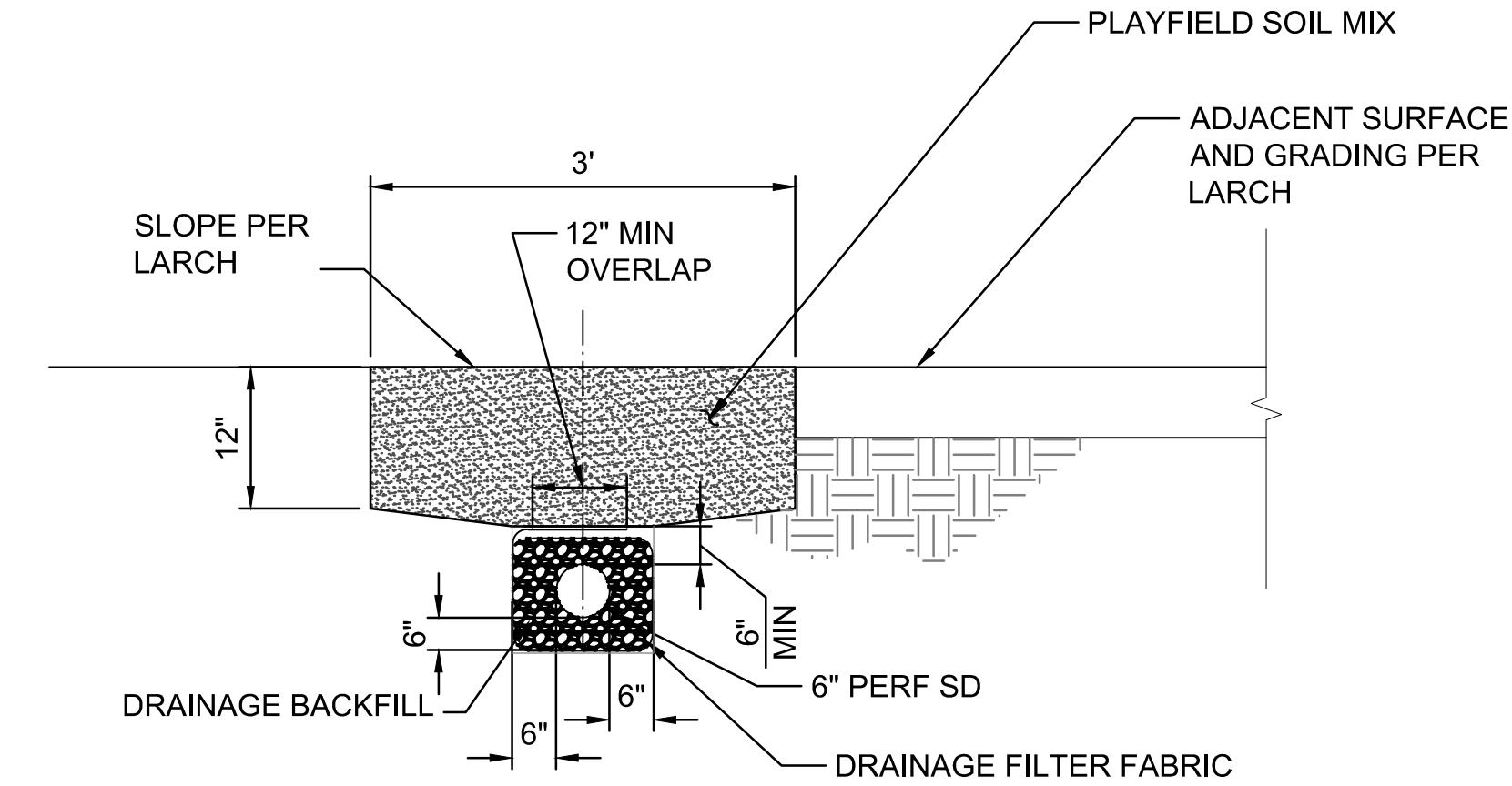


30% DRAFT DESIGN DOCUMENTS

C603



ANSI D 22' x 34'



LAWN FRENCH DRAIN
NTS

1
C811 | C802



PROJECT

SOUTH BATTERY PARK
RESILIENCY DESIGN
SERVICES

CLIENT

HUGH L. CAREY
BATTERY PARK CITY
AUTHORITY

CONSULTANT



AECOM DESIGN AND ENGINEERING
605 3rd Ave, 2nd Floor, New York, NY 10016
212.973.2900 tel www.aecom.com

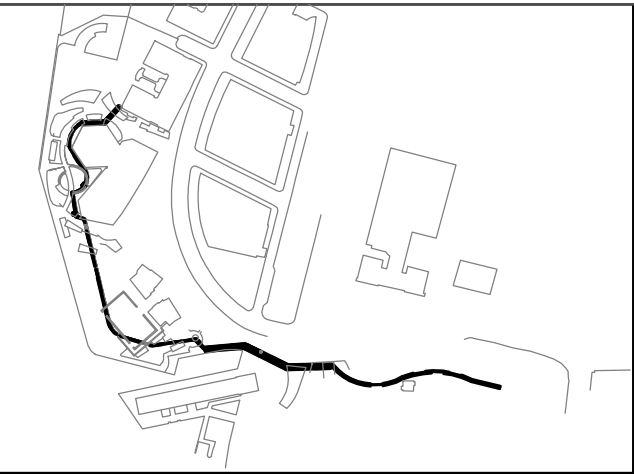
SUB-CONSULTANT

MAGNUSSON KLEMENCIC ASSOCIATES
1301 Fifth Avenue, Suite 3200
Seattle, WA 98101-2699
206.292.1200 tel 206.292.1201 fax
www.mka.com

SITE WORKS
150 West 28th St.
Suite 605
New York, NY 10001
212.255.8350 siteworkscm.com



KEY PLAN



REGISTRATION

PRELIMINARY
NOT FOR CONSTRUCTION

ISSUE/REVISION

I/R	DATE	DESCRIPTION

PROJECT/TERM CONTRACT NUMBER

Contract No. 18-2586

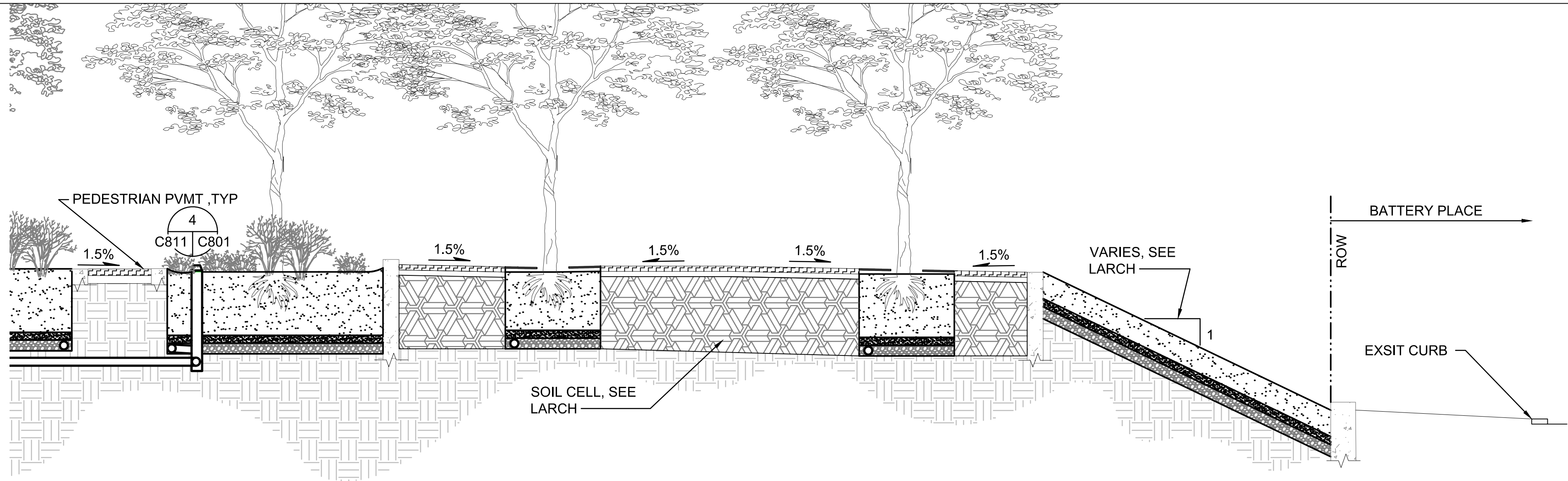
SHEET TITLE

SECTION AND DETAILS

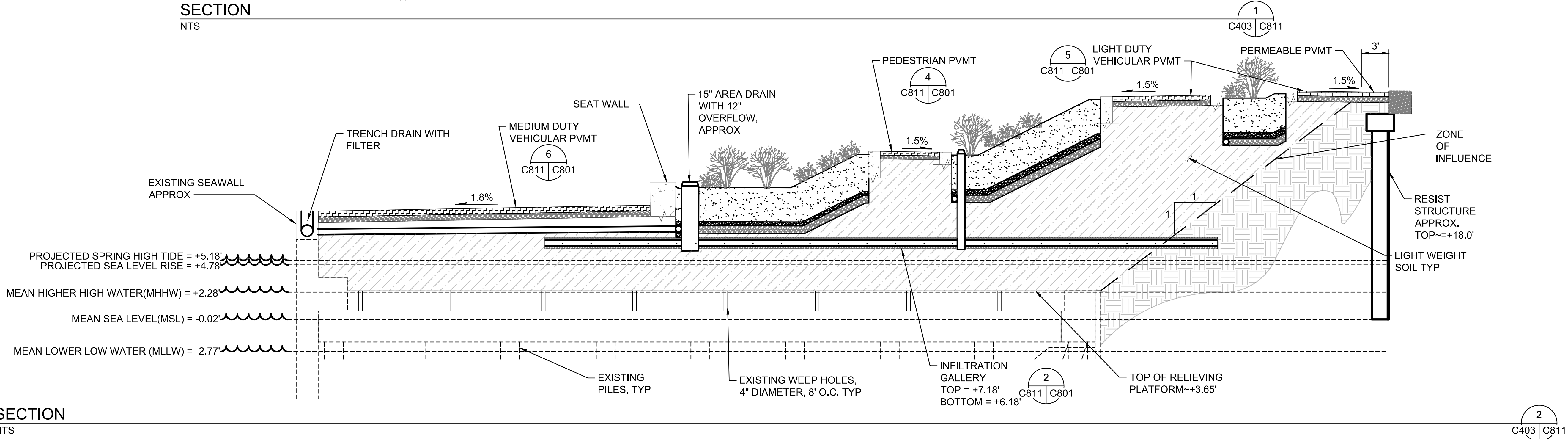
SHEET NUMBER

C802

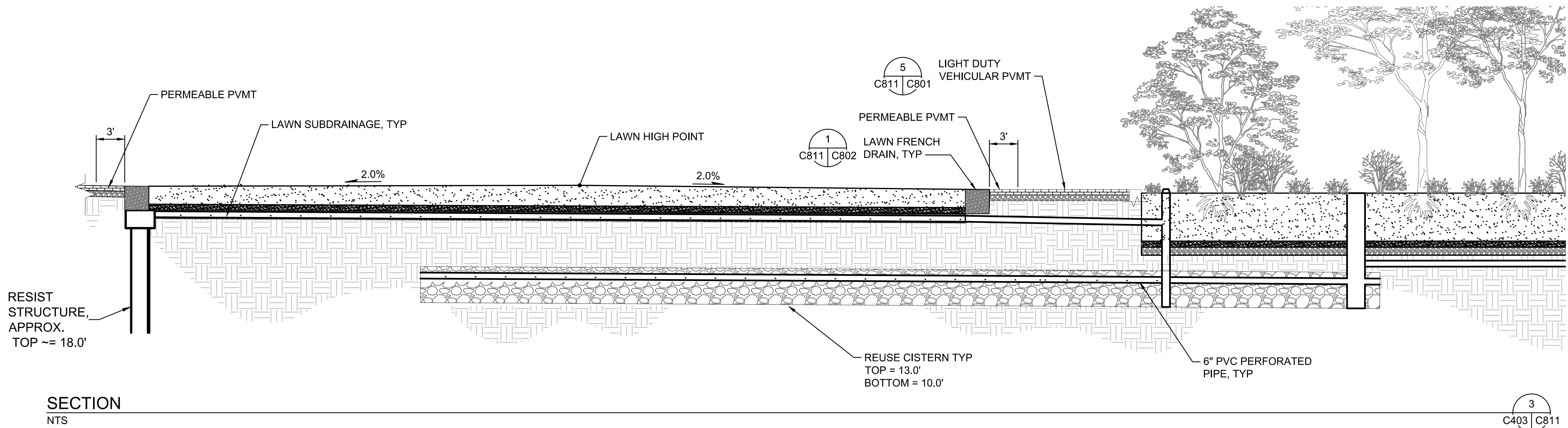
ANSI D 22" x 34"



SECTION
NTS



SECTION
NTS



SECTION
NTS

PROJECT

SOUTH BATTERY PARK
RESILIENCY DESIGN
SERVICES

CLIENT

HUGH L. CAREY
BATTERY PARK CITY
AUTHORITY

CONSULTANT

AECOM

AECOM DESIGN AND ENGINEERING
605 3rd Ave, 2nd Floor, New York, NY 10016
212.973.2900 tel www.aecom.com

SUB-CONSULTANT

MAGNUSON KLEMENCIC ASSOCIATES
1301 Fifth Avenue, Suite 3200
Seattle, WA 98101-2699
206.292.1200 tel 206.292.1201 fax
www.mka.com

SITE WORKS

150 West 28th St.
Suite 605
New York, NY 10001
212.255.8350 siteworkscm.com



KEY PLAN

REGISTRATION

PRELIMINARY
NOT FOR CONSTRUCTION

ISSUE/REVISION

YYYY-MM-DD	DATE	DESCRIPTION

PROJECT/TERM CONTRACT NUMBER

Contract No. 18-2586

SHEET TITLE

SECTIONS

SHEET NUMBER

C811