



SOUTH BATTERY PARK CITY RESILIENCY PROJECT

**OCTOBER 13, 2021
VIRTUAL PUBLIC SCOPING
MEETING**

SOUTH BATTERY PARK CITY RESILIENCY | AGENDA

WELCOME

WHAT IS SCOPING?

PROJECT DESCRIPTION

ENVIRONMENTAL REVIEW PROCESS

NEXT STEPS

SOUTH BATTERY PARK CITY RESILIENCY | WHAT IS SCOPING?

Scoping starts the environmental review process

BPCA, as lead agency, has prepared a Draft Scoping Document outlining topics to be addressed in the Draft Environmental Impact Statement (DEIS).

This meeting will serve as an opportunity to hear from the public and stakeholders. Comments will be accepted through October 29, 2021.

BPCA will prepare responses to comments received, revise the Draft Scoping Document as necessary, and issue a Final Scoping Document in November.



SOUTH BATTERY PARK CITY RESILIENCY | HOW TO COMMENT

If you REGISTERED to comment on the website

We will call on you in the order in which comments were received.

You will have up to 3 minutes to share your comment or question.

Comments or questions will be recorded but will not be responded to at this meeting.

Comments and questions will be responded to in the Final Scoping Document.

If you did NOT REGISTER to comment

If you wish to comment tonight, please enter the following in the Q/A:

Name, Name of Agency or Organization if speaking on their behalf, Email, and Comment

We will hear as many comments as possible.

Comments will be heard in the order in which they are posted.

SOUTH BATTERY PARK CITY RESILIENCY | HOW TO COMMENT

Comments are welcome until October 29, 2021. To submit comments after this Scoping Meeting:

1. Send a written comment by email or mail

Claudia.Filomena@bpca.ny.gov

Claudia Filomena, Battery Park City Authority, 200 Liberty Street, 24th Floor, New York, NY 10281

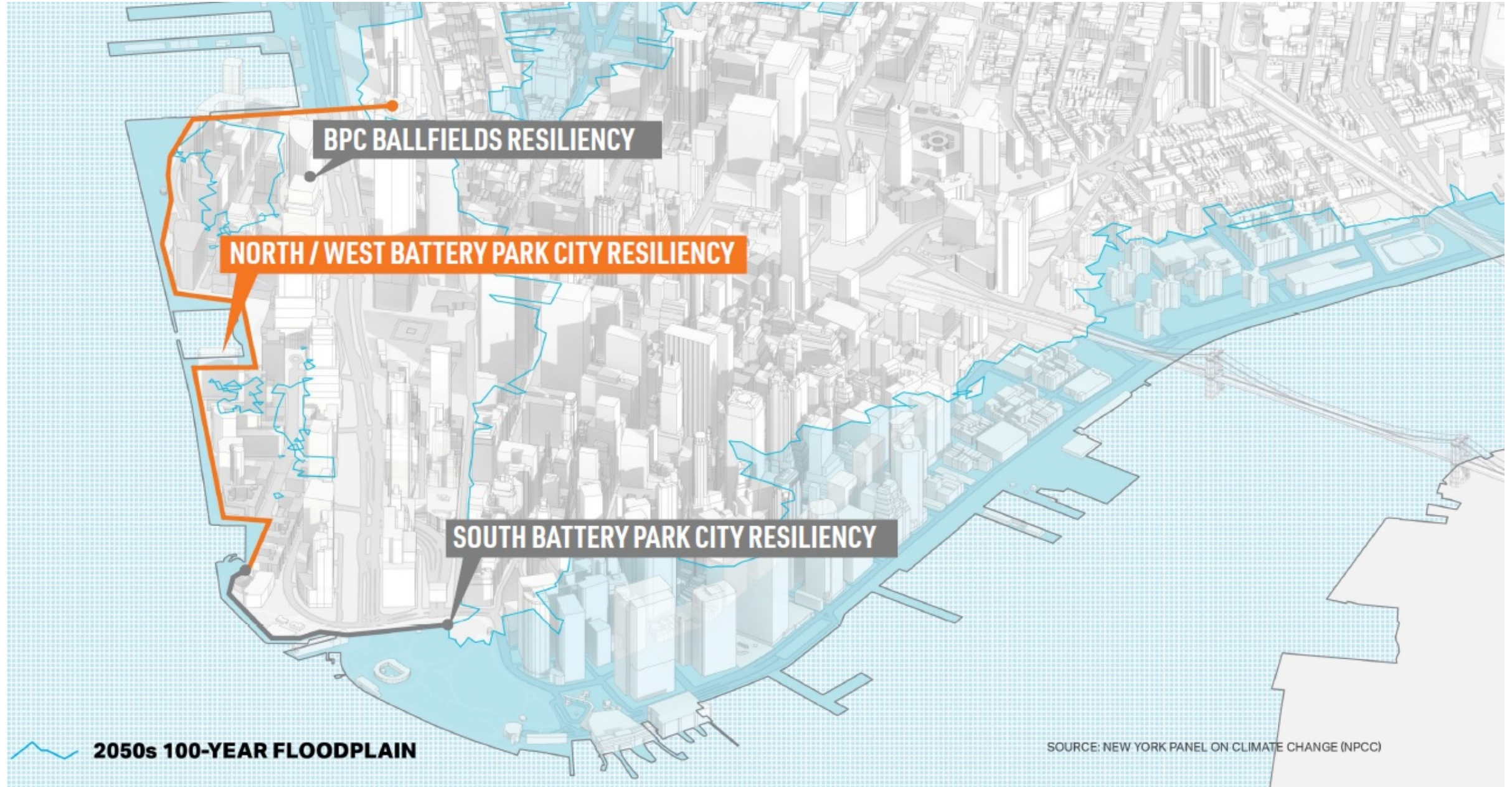
2. Record a verbal comment via voicemail at 212-417-2384.

All comments will be part of the office Scoping Meeting Record. They will be addressed in a Final Scoping Document, which will be posted on the BPCA website.

General questions about this project can be directed to Claudia.Filomena@bpca.ny.gov

**BATTERY PARK CITY AUTHORITY (BPCA) PROJECTS
AND
SOUTH BATTERY PARK CITY RESILIENCY (SBPCR)
DESCRIPTION**

LOWER MANHATTAN | BPCA RESILIENCY PROJECTS



SOUTH BATTERY PARK CITY RESILIENCY | PROPOSED ACTION

Major Project Segments

First Place

Museum of Jewish Heritage

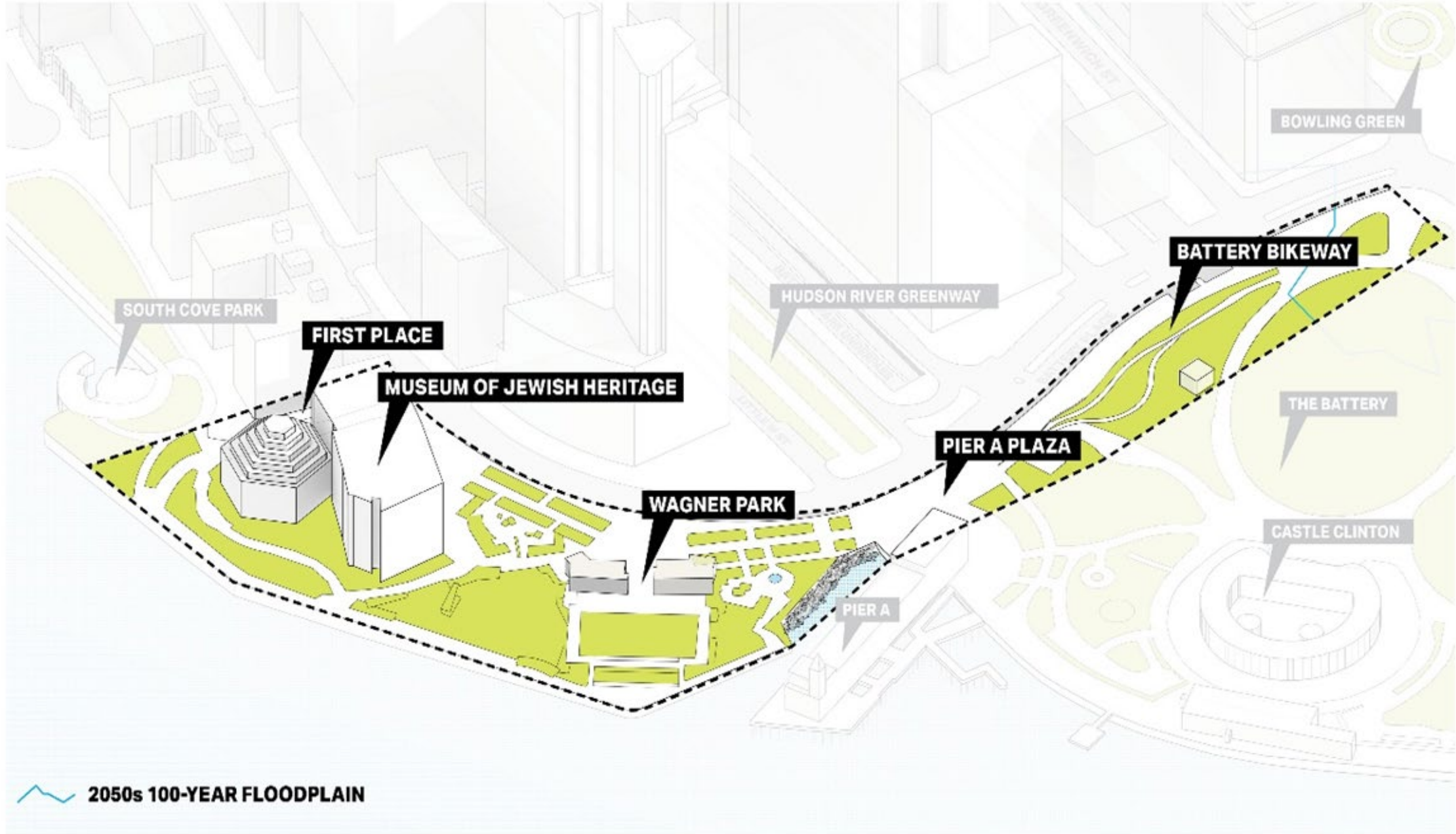
Wagner Park

Pier A Plaza

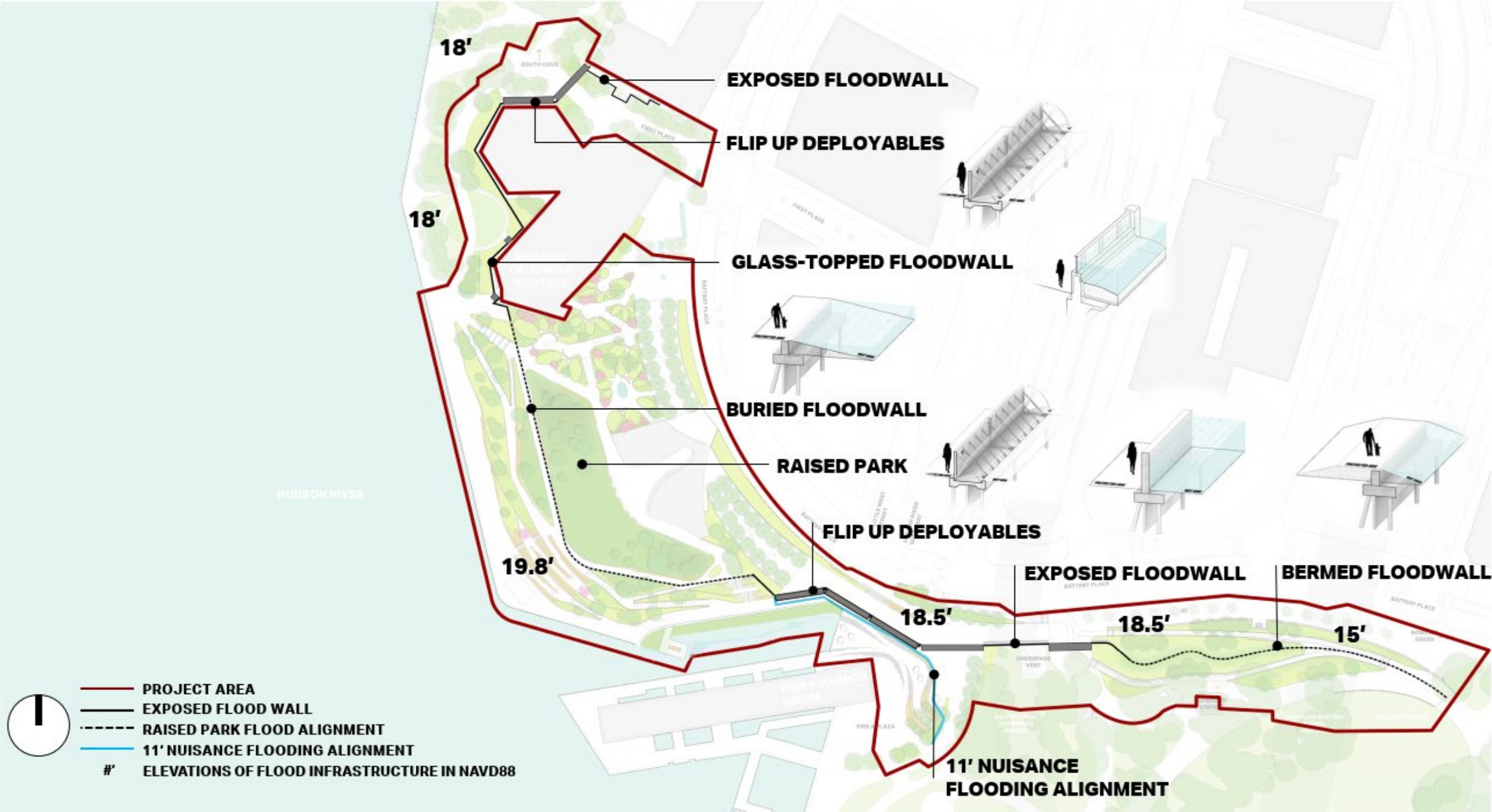
The Battery

Interior drainage improvements

SOUTH BATTERY PARK CITY RESILIENCY | MAJOR PROJECT SEGMENTS



SOUTH BATTERY PARK CITY RESILIENCY | FLOOD ALIGNMENT AND DFE



SOUTH BATTERY PARK CITY RESILIENCY | PROJECT AND STUDY AREA

Legend

Flood Alignment

- Buried Floodwall
- Exposed Floodwall
- Glass Topped Floodwall
- Flip-Up Deployable Gate

- Near Surface Isolation (NSI) Elements
- Isolation Valve
- Tidegate
- Project Area Sites
- Study Area (400 feet)



SOUTH BATTERY PARK CITY RESILIENCY | WAGNER PARK PAVILION



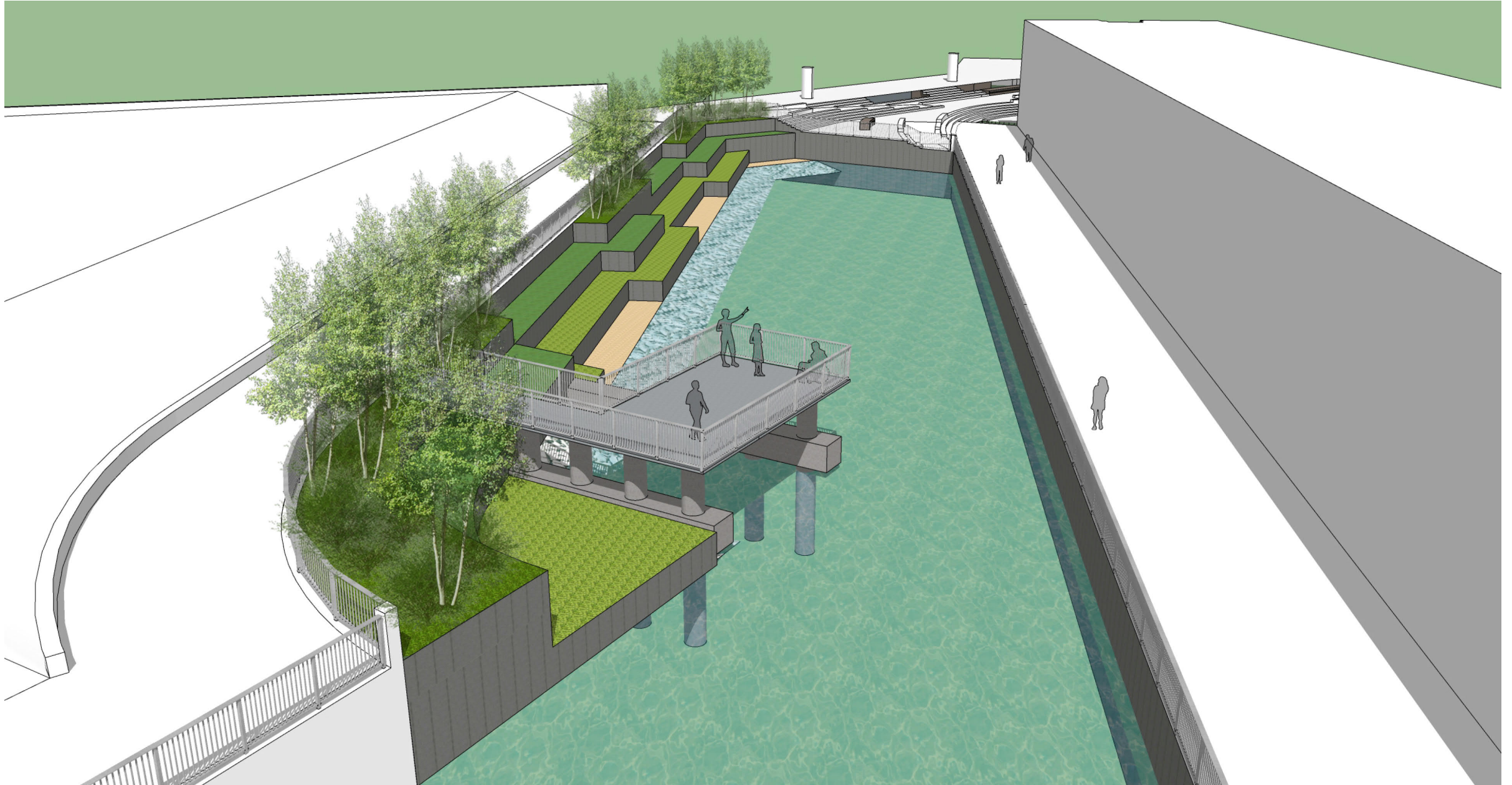
SOUTH BATTERY PARK CITY RESILIENCY | WAGNER PARK PAVILION



SOUTH BATTERY PARK CITY RESILIENCY | PIER A PLAZA



SOUTH BATTERY PARK CITY RESILIENCY | PIER A OBSERVATION PLATFORM



SOUTH BATTERY PARK CITY RESILIENCY | THE BATTERY



ENVIRONMENTAL REVIEW PROCESS

Purpose and Need

Alternatives

Analysis Framework

Environmental Topics

Next Steps

SOUTH BATTERY PARK CITY RESILIENCY | DRAFT ENVIRONMENTAL IMPACT STATEMENT (DEIS)

Required by the New York State Environmental Quality Review (SEQR) Act

Follows methodologies pursuant to both SEQR and New York City Environmental Quality Review (CEQR) Processes

Positive Declaration issued – meaning potential significant impacts are possible and an environmental impact statement (EIS) is required

SOUTH BATTERY PARK CITY RESILIENCY | PRELIMINARY CONTENTS OF DEIS

Project Description

Purpose and Need

Regulatory Requirements

Alternatives Analysis

Affected Environment

Potential Impacts

Mitigation

Public Engagement

SOUTH BATTERY PARK CITY RESILIENCY | PURPOSE AND NEED

Provide a reliable coastal flood control system to provide risk reduction to property, residents and assets within the vicinity of South Battery Park City in response to the design storm event;

Protect and preserve to the maximum extent practicable, open space resources and opportunities to view and interact with the Manhattan waterfront, particularly in Wagner Park, Pier A Plaza and The Battery; and,

Avoid or minimize disruption to existing below and above-ground infrastructure (i.e., water and sewer infrastructure, subways, tunnels, utilities, etc.) from flood events.

SOUTH BATTERY PARK CITY RESILIENCY | SPECIFIC OBJECTIVES

Provide a reliable coastal flood control system that minimizes risk and the need for operational interventions by relying primarily on passive flood control technology as opposed to mechanical “deployable” flood control technology;

Construct and operate the project in an environmentally responsible manner;

Preserve to the greatest extent practicable the character and design aesthetic of the community and its interface with the BPC waterfront and access to coastal viewsheds, particularly views of the harbor and Statue of Liberty; and,

Utilize cost-effective solutions to maximize capital investment over the lifespan of the SBPCR Project.

SOUTH BATTERY PARK CITY RESILIENCY | REASONABLE ALTERNATIVES TO THE PROPOSED ACTION

NO ACTION ALTERNATIVE

Considers future conditions in the event the project is not constructed, including other projects proposed within the Study Area

ACTION ALTERNATIVES CONSIDERED

First Place

Museum of Jewish Heritage

Wagner Park

Pier A Plaza

The Battery

Interior Drainage

SOUTH BATTERY PARK CITY RESILIENCY | ANALYSIS FRAMEWORK

2024 Build Year

Environmental and Socioeconomic Disciplines per SEQR/CEQR Requirements

Long Term (Operational) Impacts

Short Term (Construction) Impacts

Unavoidable Adverse Impacts

Growth inducing Aspects of Proposed Action

Irreversible and irretrievable Commitments of Resources

SOUTH BATTERY PARK CITY RESILIENCY | ENVIRONMENTAL AND SOCIOECONOMIC CONSIDERATIONS TO BE EVALUATED

Land Use, Zoning and Public Policy
Open Space
Shadows
Historic and Cultural Resources
Urban Design and Visual Resources
Neighborhood Character
Natural Resources

Hazardous Materials
Water and Sewer
Energy
Transportation
Air Quality
Greenhouse Gas Emissions
Noise and Vibration
Construction

SOUTH BATTERY PARK CITY RESILIENCY | ENVIRONMENTAL AND SOCIOECONOMIC CONSIDERATIONS SCREENED OUT

SOCIOECONOMICS

No residential, employee or business displacements, no retail development, no markedly different land uses and no affect to a specific industry.

COMMUNITY FACILITIES

No physical impact or displacement of community resources, no increase in resident population, no impact on public schools, healthcare facilities, publicly funded group early childhood programs, libraries or local police and fire facilities.

SOLID WASTE AND SANITATION

Does not exceed 50 tons/week of solid waste, does not affect solid waste facilities or change private or public waste collection.

PUBLIC HEALTH

No significant unmitigated impacts.

SOUTH BATTERY PARK CITY RESILIENCY | WHAT TO EXPECT AFTER THIS SCOPING MEETING?

Comment Period Closes October 29, 2021

DEIS expected to be out for public review early-2022

Public Hearing on the DEIS in early-2022

Final EIS in mid-2022

SOUTH BATTERY PARK CITY RESILIENCY | HOW TO COMMENT

Comments are welcome until October 29, 2021. To submit comments after this Scoping Meeting:

1. Send a written comment by email or mail

Claudia.Filomena@bpca.ny.gov

Claudia Filomena, Battery Park City Authority, 200 Liberty Street, 24th Floor, New York, NY 10281

2. Record a verbal comment via voicemail at 212-417-2384.

All comments will be part of the office Scoping Meeting Record. They will be addressed in a Final Scoping Document, which will be posted on the BPCA website.

General questions about this project can be directed to Claudia.Filomena@bpca.ny.gov

An aerial photograph of Lower Manhattan, New York City, showing a dense cluster of skyscrapers and buildings along the waterfront. The Hudson River is visible on the left, and the East River is on the right. The text is overlaid in the center of the image.

THANK YOU
For participating in the
South Battery Park City
Resiliency Project
Virtual Public Scoping Meeting